

**TEREX®****ROADMASTER 9000**

**90 USt (82 t) Lifting Capacity**  
**Truck Crane**  
**Sales Flyer**  
**Imperial/Metric**

# ROADMASTER 9000

**Highlights**

- ▶ 90 T (82 t) rated capacity
- ▶ Pin-boom system optimized for low weight and high strength
- ▶ X-pattern outrigger design
- ▶ 164 ft (50.0 m) boom length
- ▶ 32.8 / 62.3 ft (10.0 / 19.0 m) optional jib
- ▶ IC-1 rated capacity indicator system

**Applications**

- ▶ Commercial building erection
- ▶ Structural concrete erection
- ▶ Equipment placement
- ▶ Road and bridge construction
- ▶ Transportation—Truck loading and unloading
- ▶ Structural steel placement and erection

**WORKS FOR YOU.™**

# SPECIFICATIONS

# ROADMASTER 9000



**Maximum lifting capacity**  
90 T (82 t)

**Main boom length**  
164.0 ft (50.0 m)

**Maximum tip height with jib**  
226.3 ft (69.0 m)

## Operational Ease

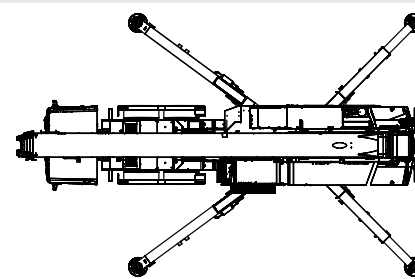
**Precision control**  
Fully proportional controls.

**New driver and operator cab**  
Enhanced to provide exceptional comfort and productivity.

## Strength and Power

**Proven boom design**  
Multi-section pin-boom.

**Engine in the upper structure**  
Separate 175 hp (129 kW) engine powers only crane functions; low fuel usage.



## New and Improved

### X-Outriggers

X-pattern outriggers are designed to offer maximum stability and strength.

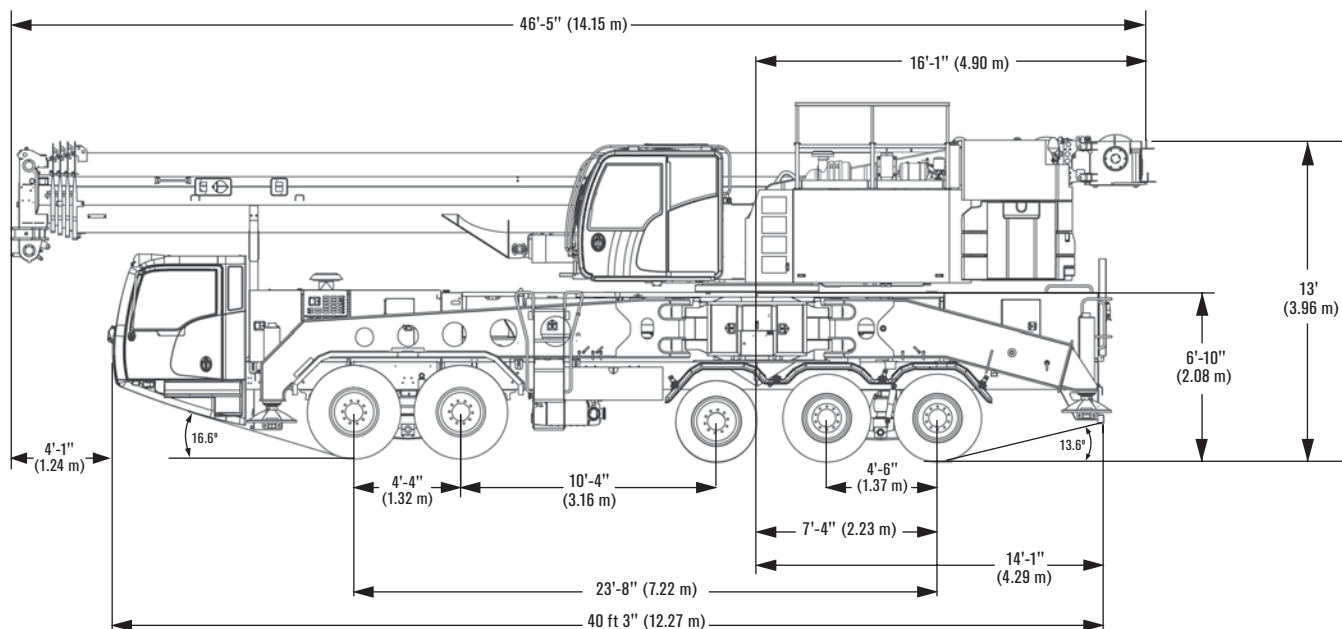
## Key Specifications

	Rated engine capacity	450 hp (335 kw)
	Hoist speed	2-speed, 476 fpm (2.4 m/sec)
	Maximum line pull	15,062.2 lb (67kN)

## Optional Equipment

- 32.8 to 62.3 ft (10.0 to 19.0 m) two-stage jib
- Counterweight packages up to 57,500 lb (26,082 kg)
- Second hoist with two-speed motor
- Consult factory for additional options

## Dimensions



Effective Date: November 2012. Product specifications and prices are subject to change without notice or obligation. The photographs and/or drawings in this document are for illustrative purposes only. Refer to the appropriate Operator's Manual for instructions on the proper use of this equipment. Failure to follow the appropriate Operator's Manual when using our equipment or to otherwise act irresponsibly may result in serious injury or death. The only warranty applicable to our equipment is the standard written warranty applicable to the particular product and sale and Terex makes no other warranty, express or implied. Products and services listed may be trademarks, service marks or trade-names of Terex Corporation and/or its subsidiaries in the USA and other countries. All rights are reserved. Terex is a registered trademark of Terex Corporation in the USA and many other countries. Copyright 2012 Terex Corporation.

Terex Cranes, Global Marketing, Dinglerstraße 24, 66482 Zweibrücken, Germany  
Tel. +49 (0) 6332 830, Email: info.cranes@terex.com, www.terexcranes.com

[www.terexcranes.com](http://www.terexcranes.com)

TC-SF-I-E-BT-ROADMASTER9000-11/12

