

BigGE
Established 1916
CRANE and RIGGING CO.



www.bigge.com | 510-638-8100

ZB20044 | 20,000 lb. Capacity, 44 ft. Lifting Height



ZOOM BOOM SERIES

Telescopic MATERIAL HANDLER
Rough Terrain Forklift

ZOOM BOOM SERIES ZB20044

DIMENSIONS

Wheelbase.....	138"	351 cm
Overall width.....	102"	259 cm
Overall height.....	108"	274 cm
Overall length (less forks).....	243"	617 cm
Ground Clearance.....	18"	46 cm
Total weight (approx.).....	45,000 lb	20,412 kg
Turn radius.....	220"	559 cm
Frame level.....	+/-8 Degrees	

SPECIFICATIONS

Engine	Cummins Tier 3 QSB4.5C turbocharged and charge-air-cooled diesel, 160 horsepower @ 2500 rpm
Transmission.....	Powershift, 3 speed forward and 3 speed reverse. Top speed - 20.5 mph (33 km/h)
Axles.....	Axletech (Rockwell) steerable outboard planetary
Brakes.....	Dry disc brakes on all four wheels Parking - pinion mounted dry disc on front axle
Tire	17.5 x 25 - 16 ply rock lug grader tubeless
Steering.....	2 wheel, 4 wheel, crab
Boom.....	3 section, welded construction Maximum lift height - 44' 10" - 1367 cm Maximum forward reach - 27' 5" - 836 cm Dual shaft type carriage Carriage rollback - 19 degrees Carriage forward tilt - 80 degrees
Forks	2.75" x 6" x 60" (6.9 cm x 15.2 cm x 152.4 cm)
General.....	Fuel/hydraulic oil tank - 55 US gal. (208L) Hydraulic pump - 64 gpm @ governed rpm 12 volt - 105 amp. alternator

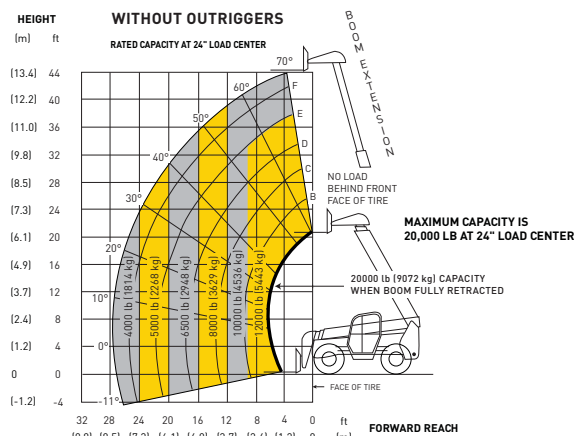
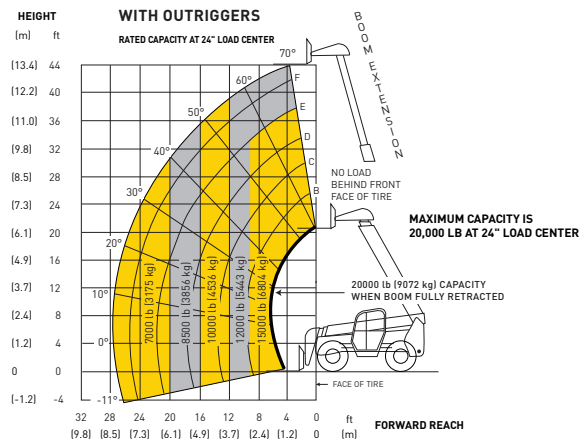
STANDARD EQUIPMENT

- Pilot-operated joystick boom & frame level controls
- 4 wheel power steering
- Gauge instrumentation
- Hydraulic frame leveling
- Automatic self-leveling forks
- Engine block heater
- Quick disconnect carriage
- ROPS/FOPS operator compartment
- Lockable fuel cap, and engine compartments
- Service and park brake activated transmission disconnect
- Anti-restart keyed ignition switch with neutral start
- Enclosed lockable engine cowl
- Capacity chart
- Right-hand arm rest
- Outriggers
- Adjustable seat
- Retractable seat belt
- Anti-freeze
- Central frame tilt lubrication
- Electric horn
- Checker plate deck covers and anti-skid floors and steps
- Dual batteries
- Yellow paint with black trim
- Over center lock valves on all hydraulic functions
- Foot throttle
- External rear view mirrors
- Two stage air cleaner
- 4 wheel drive
- Automatically activated S.A.H.R. parking brake
- Rear axle "stable-lock" cylinder
- Load backrest
- Return line hydraulic oil filter
- Hydraulic tank pickup sump strainer
- Muffler guard

OPTIONAL EQUIPMENT

- Various carriage/fork sizes
- Turn signals/lights
- Working lights
- Flashing beacon
- Fork positioner
- Auxiliary hydraulics
- Enclosed operator cab
- Sideshift carriage
- Material bucket
- Coil ram
- Pipe and pole grapple
- Pipe and pole clamp
- Other specialized attachments
- 15,000 lb winch
- Foam filled tires
- Fenders
- Air conditioning
- Mine code specification

CAPACITY CHART



- Machine design complies with ASME/ANSI B56.6 stability requirements for rough terrain forklifts.
- For attachments consult factory for load rating.
- Read boom angle and boom extension, then determine allowable load from chart.
- Figures shown are stacking capacity with truck level on a firm surface and with properly inflated tires.
- Do not exceed rated loads as dangerous and unstable machine conditions will result.

IMPORTANT

- All capacities rated on firm ground, with the machine steered straight and frame level.
- Always travel with boom retracted in the lowest possible position.
- Never position fork carriage behind front face of tire.

Note: This literature is for illustrative purposes only. Consult the Operating Maintenance and Parts Manuals for proper procedures. Specifications are nominal and subject to change without notice.

Bigge Crane and Rigging Co.

10700 Bigge Avenue
San Leandro, CA 94577
Phone: (888) 337-BIGGE or (510) 638-8100
Fax: (510) 639-4053
Email: info@bigge.com
Web site: www.bigge.com