

**MERLO**

# ROTO 70.28 S PLUS



**Maximum Load Capacity:** 15,400 Lbs

**Maximum Lift Height:** 91' 0"

**Maximum Reach:** 76' 1"

**Load Capacity at Max. Reach:** 1,800 Lbs

**Load Capacity at Max. Lift:** 6,600 Lbs





# SPECIFICATIONS

# ROTO 70.28 S PLUS

## PERFORMANCE

Turret rotation	Continuous 360°
Unladen Weight (lbs)	50,700
Maximum Load Capacity (lbs)	15,400
Lift Height (ft)	91'0"
Maximum Reach (ft)	76' 1"
Load Capacity at Max. Lift Height (lbs)	6,600
Load Capacity at Max. Reach (lbs)	1,800
Frame Leveling - front/side (%)	12° 4°

## POWERTRAIN

Engine	Iveco 4 Cyl
Range / Cylinders	4.5/4
Engine Power (kW/HP)	170
Maximum Speed (mph)	25
Automatic Parking Brake	●

## HYDRAULIC

Hydraulic Pump	LS + FS
Delivery / Pressure (psi-g/min)	3770/42.2
Hydraulic couplings	●

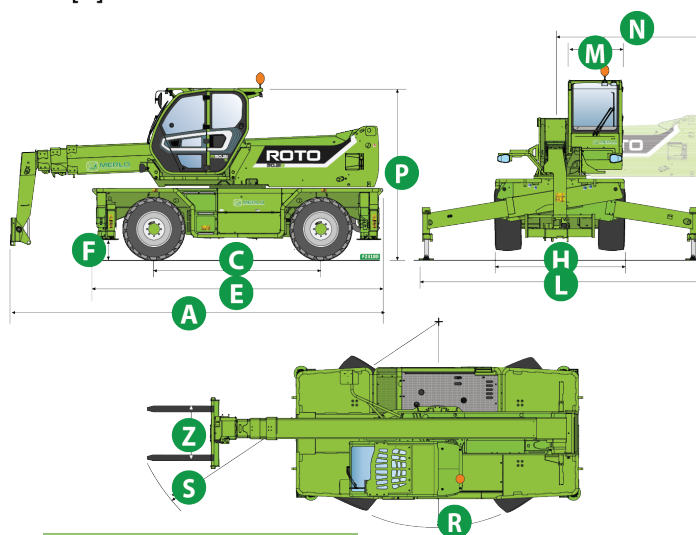
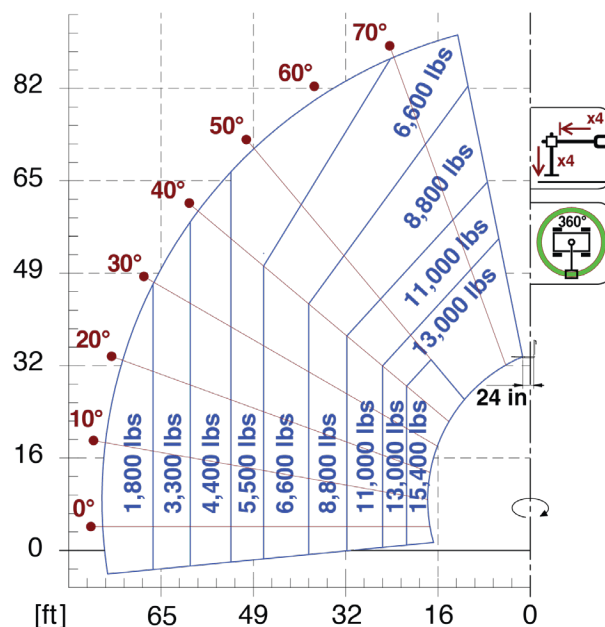
## CAB

Cab Finishing	Premium
FOPS LIV II e ROPS	●
Controls	Electronic Joystick
Tilting Cab	●
Reverse shuttle	Dual Reverse

## CONFIGURATION

Hydropneumatic Suspension EAS Merlo	●
Tac-lock	●
Pre-arrangement for aerial work platform	●
Standard tires	445/65-R22.6
Hydraulically controlled stabilizers	Multi-position
Ground clearance	1' 4"

● Standard    ● Optional



## DIMENSIONS

A	27' 3"	H	8' 2"	P	10' 11"
C	12' 4"	L	20' 8"	R	15' 8"
E	22' 8"	M	3' 3"	S	22' 11"
F	1' 0"	N	12' 1"	Z	2' 9"
Stabilizers fully extended		20' 8"			

The technical data and other information in this document are not binding. We reserve the right to modify our products without prior notice as part of our policy of continuous improvement.

IMPORTED & DISTRIBUTED BY



ams-merlo.com

September 2020

803-327-4949

1205 Galleria Blvd., Rock Hill, SC 29730