

**MERLO**

# ROTO 40.18 S



**Maximum Load Capacity:** 8,800 Lbs

**Maximum Lift Height:** 58' 0"

**Maximum Reach:** 49' 3"

**Load Capacity at Max. Reach:** 800 Lbs

**Load Capacity at Max. Lift:** 6,000 Lbs



# SPECIFICATIONS

# ROTO 40.18 S

## PERFORMANCE

Unladen Weight (lbs)	29,900
Maximum Load Capacity (lbs)	8,800
Lift Height (ft)	58'0"
Maximum Reach (ft)	49' 3"
Load Capacity at Max. Lift Height (lbs)	6,000
Load Capacity at Max. Reach (lbs)	800
Boom Side-Shift (in)	-
Frame Leveling	12° 4°
Boom Sections	4

## POWERTRAIN

Engine	Iveco
Displacement/Cylinders	3.6/4
Engine Power (HP)	115
Reversible Fan	-
Maximum Speed (mph)	25
Fuel Tank Capacity (gal)	37
AdBlue Tank Capacity (gal)	4.7
Hydrostatic Transmission	● -2V
EPD	●
Axles	Drop Portal
Reducers	RR700
Brakes	Dry Discs
Automatic Parking Brake	●

## HYDRAULIC

Hydraulic Pump	LS + FS
Delivery/Pressure (psi-gal/min)	3,625-27.2
Hydraulic Oil Tank Capacity (gal)	34.3
Auxiliar Hydraulic Service on Boom	●
Rear Service Line	-

● Standard    ● Optional

## DIMENSIONS

Width (ft)	7'4"	Length (ft)	20' 4"
Height (ft)	9' 8"	Wheelbase (ft)	9' 2"
Ground Clearance	1' 4"	Turning Radius Over Tires	13' 0"

## CAB

Cab Finishing	Premium
MCDC	●
FOPS II Cab	●
ROPS Cab	●
Controls	Electronic Joystick
Reverse Shuttle	Dual Reverse

## CONFIGURATION

Hydropneumatic Suspension CS Merlo	-
Hydropneumatic Suspension BSS Merlo	-
Hydropneumatic Suspension EAS Merlo	●
Work lights on cab	●
Sun-shade in the cab	●
Tac-lock	●
Pre-arrangement for aerial work platform	●
Two floating forks	●
Pedal Inching-Control	-
Permanent four-wheel drive	●
4 Wheel Drive	●
3 Steering Modes	●
Standard tires	405/70-20"
Hydraulically controlled stabilizers	On/Off
Turret rotation	415°
Tractor type approval	-
PTO	-
3-point rear linkage	-

The technical data and other information in this document are not binding. We reserve the right to modify our products without prior notice as part of our policy of continuous improvement

September 2020

IMPORTED &amp; DISTRIBUTED BY



ams-merlo.com

803-327-4949

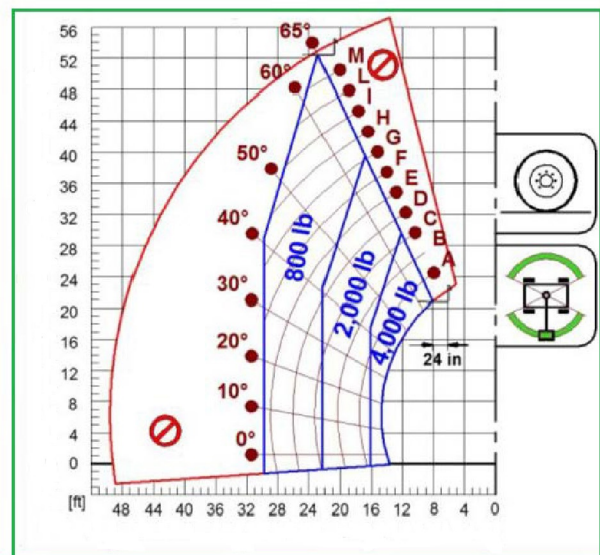
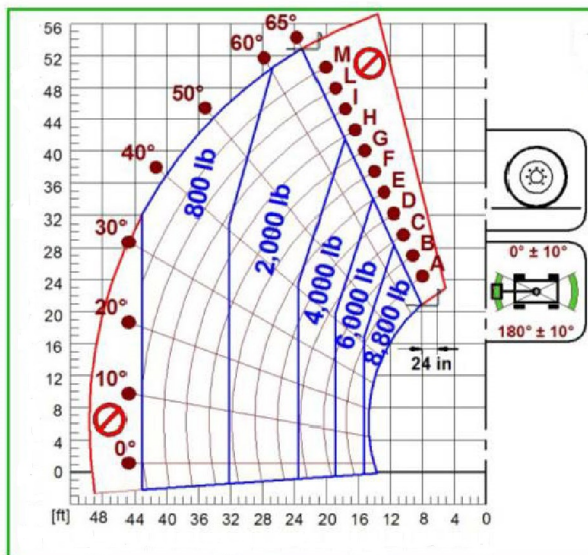
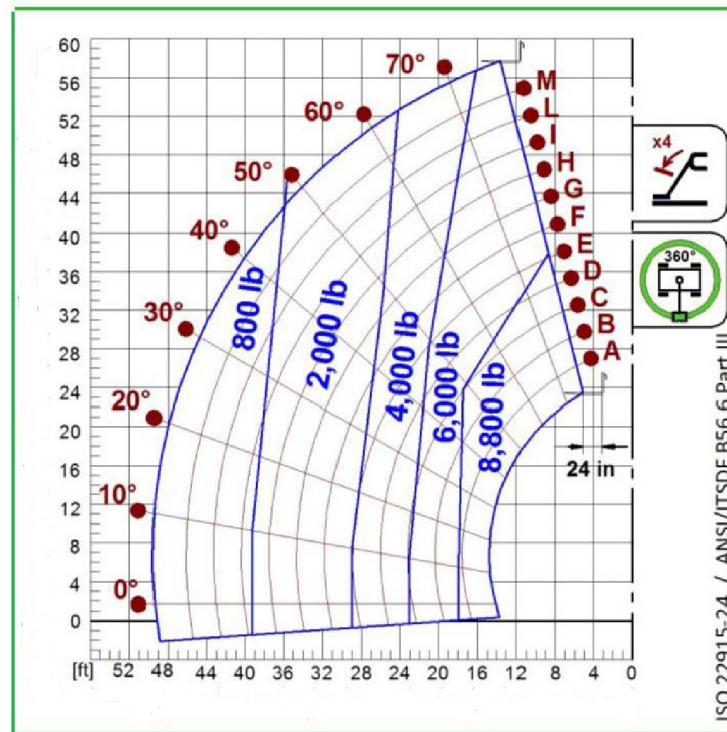
1205 Galleria Blvd., Rock Hill, SC 29730





# LOAD CHARTS

# ROTO 40.18 S



IMPORTED & DISTRIBUTED BY



[ams-merlo.com](http://ams-merlo.com)

803-327-4949

1205 Galleria Blvd., Rock Hill, SC 29730

**BIGGE**



This information is for reference use only. Operators manual should be consulted and adhered to.  
Please contact Bigge Crane and Rigging Co. at 888-337-BIGGE or email info@bigge.com for further information.



**BIGGE**

**MERLO****ROTO 40.18 S****ams-merlo.com**

IMPORTED &amp; DISTRIBUTED BY

**ams-merlo.com****803-327-4949**

1205 Galleria Blvd., Rock Hill, SC 29730

