

## Hydraulic Crawler Crane

# CK850G

Max. Lifting Capacity : 85 US Tons

Max. Crane Boom Length : 200 ft

Max. Fixed Jib Combination : 180 ft + 60 ft



# **CONTENTS**

## **2 SPECIFICATIONS**

## **6 G-MODE**

## **7 LMI**

## **8 WINCH PERFORMANCE**

## **9 GENERAL DIMENSIONS**

## **10 DIMENSIONS & WEIGHT**

## **13 TRANSPORTATION PLAN**

## **14 SELF ASSEMBLY PROCEDURE**

## **15 COUNTERWEIGHT SELF-REMOVAL DEVICE**

## **16 BOOM & JIB ARRANGEMENTS**

## **17 WORKING RANGES**

## **20 SUPPLEMENTAL DATA**

## **21 LIFTING CAPACITY**

## **29 CLAMSHELL DATA**

## **31 BARGE DATA**

# SPECIFICATIONS

## General Description



|                                      |   |
|--------------------------------------|---|
| <i>Type</i>                          | Crawler mounted, Lattice boom, Hydraulic controlled       |
| <i>Maximum lift capacity</i>         | 170,000 lbs (77,110 kg) @ 10' operating radius (40' boom) |
| <i>Basic boom length</i>             | 40' (12.2 m)  |
| <i>Maximum boom length</i>           | 200' (61.0 m)   |
| <i>Basic boom &amp; jib length</i>   | 80' + 30' (24.4 m + 9.1 m)                                |
| <i>Maximum boom &amp; jib length</i> | 180' + 60' (54.9 m + 18.3 m)                              |
| <i>Working weight</i>                | Approx. 165,700 lbs (75,140 kg)                           |
| <i>Ground bearing pressure</i>       | Approx. 10.8 psi (84.7 kPa)                               |
| <i>Gradeability</i>                  | 40%   |

Calculations to determine working weight, ground bearing pressure, and gradeability include the weight of the upper and lower works of the crane, counterweights, and carbody weights, 40' boom and hook block.

## General Dimensions

|  |                 |
|--|-----------------|
| <i>Height to top of gantry (lowered)</i>       | 10'10" (3.31 m) |
| <i>Width of upper machine w/operator's cab</i> | 9'10" (2.99 m)* |
| <i>Radius of rear end (counterweights)</i>     | 14'9" (4.50 m)  |
| <i>Counterweight ground clearance</i>          | 3'7" (1.10 m)   |
| <i>Center of rotation to boom foot pin</i>     | 3'7" (1.10 m)   |
| <i>Height from ground to boom foot pin</i>     | 5'9" (1.75 m)   |
| <i>Height over gantry (raised)</i>             | 20'3" (6.17 m)  |
| <i>Overall length of crawlers</i>              | 20'7" (6.28 m)  |
| <i>Overall width of crawlers</i>               | 17'2" (5.24 m)  |
| <i>Center to center, idler to sprocket</i>     | 17'10" (5.44 m) |
| <i>Shoe width</i>                              | 36" (0.91 m)    |
| <i>Ground clearance of body</i>                | 15" (0.39 m)    |

## Working Speed

|  |                                 |
|--|---------------------------------|
| <i>Hoist line speed (front and rear drums)</i>         | 390 ~ 10 ft/min (120 ~ 3 m/min) |
| <i>Lowering line speed (front and rear drums)</i>      | 390 ~ 10 ft/min (120 ~ 3 m/min) |
| <i>Boom hoist line speed (front and rear drums)</i>    | 230 ~ 6.6 ft/min (70 ~ 2 m/min) |
| <i>Boom lowering line speed (front and rear drums)</i> | 230 ~ 6.6 ft/min (70 ~ 2 m/min) |
| <i>Swing speed (max.)</i>                              | 4.0 rpm                         |
| <i>Travel speed (high/low)</i>                         | 1.1/0.72 mph (1.7/1.1 km/h)     |

Line speed based on single line, no load, and first layer of rope on the drum.

## Upper Machinery

### Power Plant:

|                                       |  |
|---------------------------------------|--|
| <i>Diesel engine - make and model</i> | Hino J08E-UV<br>(complies with Interim "Tier 4")   |
| <i>No. of cylinders</i>               | 6  |
| <i>Bore X stroke</i>                  | 4-13/32" x 5-1/8"<br>(112 mm x 130 mm)   |
| <i>Cycles</i>                         | 4  |
| <i>Total displacement</i>             | 469 cu.in. (7.684 ℓ)   |
| <i>Rated output SAE GROSS</i>         | 285 HP / 2,100 rpm (213 kW / 2,100 min <sup>-1</sup> )   |
| <i>Maximum torque</i>                 | 750 lbs-ft / 1,600 rpm (1,017 Nm / 1,600 min <sup>-1</sup> )                                     |
| <i>Starter</i>                        | 24 Volts / 5.0 kW  |
| <i>Alternator</i>                     | 24 Volts / 90 Amp  |
| <i>Batteries</i>                      | Two 12 volt, 136 AH/5 HR capacity series connected.  |
| <i>Radiator</i>                       | Corrugated type core, thermostatically controlled, with cleanout screen.                         |
| <i>Throttle</i>                       | Twist grip type hand throttle, electrically controlled, in conjunction with floor mounted pedal. |
| <i>Air cleaner</i>                    | Dry type with replaceable paper element.   |
| <i>Fuel tank capacity</i>             | 106 US gal. (400 liters)   |
| <i>Lube oil filters</i>               | Full flow and by-pass type with element type.  |
| <i>Fuel filter</i>                    | Replaceable paper element.   |



\* 10'5" wide with Catwalk on cab side only



# SPECIFICATIONS



Self Lifting Device - Standard Equipment

## Counterweight and Carbody weight

|                     |                       |
|---------------------|-----------------------|
| Counterweight Base  | 1 x 20,600 (9,320 kg) |
| Counterweight (R)   | 2 x 9,250 (4,200 kg)  |
| Counterweight (L)   | 2 x 9,250 (4,200 kg)  |
| Total Counterweight | 57,600 (26,120 kg)    |

|                      |                      |
|----------------------|----------------------|
| Carbody weight       | 2 x 7,200 (3,250 kg) |
| Total Carbody weight | 14,400 (6,500 kg)    |



## Hydraulic system

Maximum pressure rating  
4,626 psi (31.9MPa)

Cooling  
Oil to air heat exchanger

Filtration  
Full flow filters with replaceable  
paper elements

Reservoir capacity

## Hydraulic pumps:

### Load hoist, boom hoist, and propel

2 piston pumps, max flow rate  
67.3 US gal/min x 2 (255 ℓ/min x 2)

### Swing

1 piston pump, max flow rate  
46.7 US gal/min (177 ℓ/min)

### Control system and auxiliary

2 Gear pumps, max flow rate  
16.3 US gal/min + 10.6 US gal (61.6 ℓ/min + 40.5 ℓ/min)

### Brake cooling system

2 gear pumps, max flow rate  
19.4 US gal/min x 2 (73.5 ℓ/min x 2)

## Gantry

This high folding type gantry is fitted with a sheave frame for boom reeving. Hydraulic lift is standard. It provides full up, full down positions with linkage.

## Operators cab

Totally enclosed from weather, this full-vision cab has safety glass all around. The adjustable, high-backed seat with armrest is capable of adjustment with or without the control console. Auxiliary controls and instruments are on a side mounted console. A signal horn, windshield wipers, air conditioner/heater, and swing limiter are all standard features.

## Controls

At the operator's right are console-mounted adjustable short levers for the front and rear drum and the boom hoist control. Fine inching control and free fall activation switches are built in to the levers. Beside the seat on the right are two short levers for propel control, plus individual speed dial controls for front, rear, and boom drums. At the left is the console mounted swing lever, an optional 3rd drum control, switches for the front, rear, and boom drum pawls, and the engine start/stop key. A swing brake control switch and signal horn button are on the swing lever.

## Swing:

### Swing unit

Hydraulic motor driving spur gears through planetary reducers to output swing pinion for 360 degree rotation.

### Swing brake

Spring set hydraulically released multiple disk brake mounted on swing motor.

### Swing circle

Single row ball bearing with an integral internally cut swing gear.

### Swing lock





# SPECIFICATIONS



## Line pull:

Max. line pull (single line) - 34,400 lbf (153 kN)

Rated line pull - 17,000 lbf (78.5 kN)

## Lower Machinery

### Crawlers:

Crawler assemblies can be hydraulically extended or retracted for wide track operation or retracted for transportation. Crawler belt tension adjusted with hydraulic jack and maintained by shims between the idler block and frame.

### Crawler drive:

The independent two speed hydraulic propel drive is built into each crawler side frame. Each drive consists of a hydraulic motor driving a propel sprocket through a planetary gear box. The hydraulic motor and gear box are built into the crawler side frame within the shoe width.

### Crawler brakes:

Spring set, hydraulically released, multiple disk-type parking brakes are built into each propel drive.

### Steering mechanism:

A hydraulic propel system provides both skid steering and counter rotating steering.

### Crawler shoe:

66 shoes - 36" wide, each crawler.

### Track rollers:

The track rollers are sealed for maintenance free operation.

### Front drum:

Front and rear drums for load hoist powered by hydraulic variable plunger motors, driven through planetary reducers.

### Negative brake

A spring-set, hydraulically released multiple disk brake is mounted on the hoist motor and operated through a counter-balance valve.

**Drum lock** External ratchet for locking drum

### Drums:

#### Front drum -

550 mm P.C.D. x 545 mm Lg., grooved for 22 mm wire rope. Rope capacity is 869' (265 m) working length and 1,099' (335 m) storage length.

#### Rear drum -

550 mm P.C.D. x 545 mm Lg., grooved for 22 mm wire rope. Rope capacity is 673' (205 m) working length and 1,099' (335 m) storage length.

#### 3rd drum (optional) -

550 mm P.C.D. x 545 mm Lg., grooved for 22 mm wire rope. Rope capacity is 476' (145 m) working length and 1,099' (335 m) storage length.



# SPECIFICATIONS

## Crane Attachments

*Boom:*  
The welded lattice construction uses tubular, high-tension steel chords with pin connections between sections.

|                            |                |
|----------------------------|----------------|
| <i>Maximum boom length</i> | 200' (61.0 m)  |
| <i>Basic boom length</i>   | 40' (12.2 m)   |
| <i>Boom base section</i>   | 19'7" (5.97 m) |
| <i>Boom tip section</i>    | 22'8" (6.91 m) |

*Boom insert (optional):*  
Optional boom inserts are available to provide extension capabilities. They are robotic welded, laser aligned, lattice constructed with tubular, high-tension steel chords and pin connections.

|                    |  |
|--------------------|--|
| <i>Boom insert</i> | 10' (3.1 m), 20' (6.1 m), 40' (12.2 m) |
|--------------------|--|

*Jib (optional):*  
Jib inserts are available to provide extension capabilities. The optional jib employs welded lattice construction with tubular, high-tension steel chords with pin connections between sections.

|                           |                          |
|---------------------------|--------------------------|
| <i>Maximum jib length</i> | 60' (18.3 m)             |
| <i>Basic jib length</i>   | 30' (9.1 m)              |
| <i>Jib base section</i>   | 15'9" (4.8 m)            |
| <i>Jib tip section</i>    | 16'1" (4.9 m)            |
| <i>Jib insert</i>         | 10' (3.1 m), 20' (6.1 m) |

Jib is useable on booms of 80' (24.4 m) through 180' (54.9 m)

## Standard Equipment

- Lights:*
  - Two (2) front flood lights
  - One (1) cab inside light
- Gauges and warning display*

*Gauges*
  - One (1) tachometer
  - One (1) hour meter
  - One (1) fuel gauge
  - One (1) water temperature

*Warning display*
  - Battery charge
  - Engine oil pressure
  - Air cleaner
  - Engine oil filter
  - Control main pressure
  - Hydraulic oil temperature
  - DPF condition indicator

- Others*
  - Air conditioner/heater
  - Drum turn indicator (front/rear)
  - Foot pedal / throttle
  - Electric transfer pump
  - Counterweight self-removal device
  - KCross Telematics
  - Free fall winches

### Safety Service

- Function lock lever
- Swing Limiter
- Boom over hoist limit switch
- Signal horn
- Front/rear hoist drum lock
- Swing Limiter (Buzzer, lamps, or stops)
- Overload prevention device (LMI)
- Hook over hoist shut off (Anti-two-block)
- Boom angle indicator



*Auxiliary sheave (optional):*  
Auxiliary sheave is extendible on booms of 40' (12.2 m) through 190' (57.9 m)

*Boom hoist reeving:*  
Twelve (12) parts of 5/8" (16.0 mm) diameter high strength wire rope.

*Boom backstops:*  
Telescopic type with spring bumper

- Safety Service (cont)*
  - Level indicator
  - Boom hoist drum lock
  - Swing locks, anti drift, and mechanical
  - Boom backstops
  - Boom base catwalk
  - Upper machinery catwalk, handrails and ladder

### Tools and Accessories

A set of tools and accessories are furnished.

### Optional Equipment

- Third drum
- Hook block
- Hook ball
- Auxiliary sheave
- Fixed jib

## SPECIFICATIONS

## G-Mode

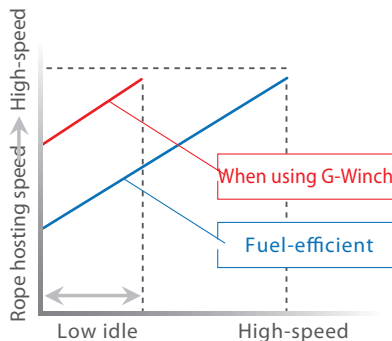
The G-modes are a standard exclusive energy and fuel saving system, with up to 30% in fuel savings. The G-Mode eliminates needless operations and engine functions allowing for reduced fuel consumption by using three basic modes that are all operator selectable.

*Auto Idling Stop Mode (AIS):**An Industry First*

The AIS mode can conserve fuel by stopping the engine, with an operator prompt, after 10 seconds of idling time. Restarting the engine is simple by just twisting the throttle.

*G-Winch Mode:**An Industry First*

The G-winch mode can produce maximum winch line speed at a low engine RPM.



The high speed mode allows the line to be raised or lowered at maximum line speed without raising engine speed when lifting without a load.

*G-Engine Mode:**An Industry First*

The G-engine mode limits maximum engine speed to 1,750 RPM and controls the pumps to make engine operation in the most efficient condition.

**G-Engine****G-Winch****AIS***Exhaust cleaning DPR:*

The DPR (diesel particulate active reduction system) burns PM (particulate matter) collected by the DPF (diesel particulate filter) from the diesel exhaust gas, increasing the PM collection efficiency of the DPF, and recovering to purify the exhaust. This means that the exhaust gas from the diesel engine is cleaner, conforming with current EPA Interim Tier 4 regulations.

A new clean diesel system - although diesel engines consume less fuel and emit less CO<sub>2</sub> than gasoline engines, they also emit more harmful particulate matter and nitrogen oxide (NO<sub>x</sub>). The "new clean energy system" engine utilizes a DPF to reduce particulate matter, which is also kept to a minimum using negative ions. This system requires the use of low sulfur diesel.

\* Warning: High sulfur diesel will damage the engine.

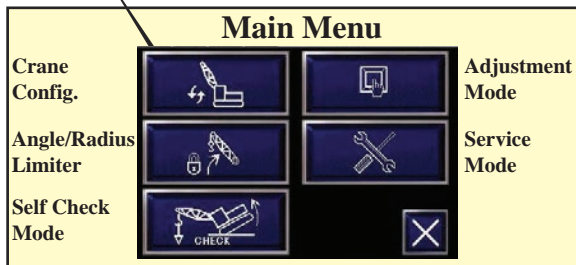
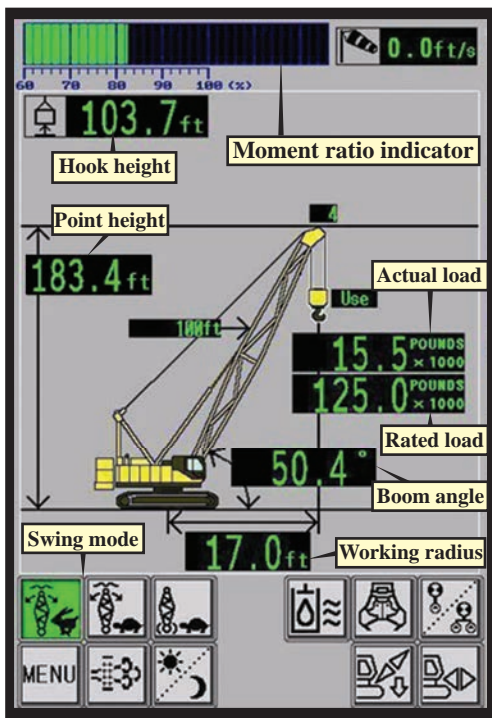


# SPECIFICATIONS

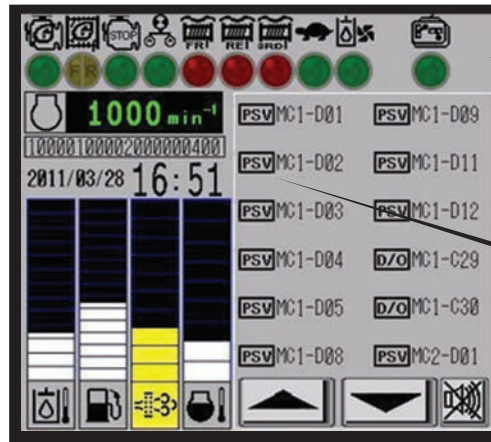
## Load Moment Indicator (LMI)

The Kobelco newly designed 12" touch panel screen with sunshade and screen protector is an industry first. This intuitive and easy to understand new touch screen monitor gives the operator a full display of essential data. Universal pictograms are used providing easy visual recognition, making this new technology easy to read and understand the information. This new monitor includes: Hook Height, Engine Speed, Display Lamp of standard functions, Gauges, Over-Swing Prevention Device, Switches, and Error Messages.

### Moment Limiter (Left Side)



### Gauges (Right Side)



#### Display Lamp

Display lamp Remote control connection  
G-Engine Oil cooler operation  
G-Winch Free fall (auxiliary)  
AIS operation Free fall (3rd)  
Slow speed state

#### Error Message

Touch to display details in a pop-up window.

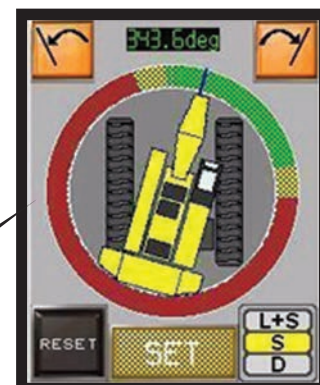
#### Gauges

Hydraulic oil temperature  
Fuel gauge  
Diesel particulate filter gauge  
Coolant temperature

\* Figures for the above gauges are only shown when the bar is touched.

### Over-Swing Prevention

An over-swing preventative device is standard. It limits the swing of the crane. Configuration is simple and can be done from the touch panel.



# SPECIFICATIONS

## Winch Performance Data

### Note:

Line speed and line pull based on Hino J08E-UV at 2,100 rpm.

Line speed and line pull based on single line.

Max. line pull is based on referential performance, not wire rope strength.

### Front & Rear Drum

Wire Rope Diameter = 22 mm

Rated Line Pull = 17,000 lbf (78.5 kN)

Maximum Line Pull = 34,400 lbf (153 kN)

Total Storage Capacity = 1,099 ft (334.9 m)

|                       |        | Line speed (ft/min) |     |     |     |     |                 |
|-----------------------|--------|---------------------|-----|-----|-----|-----|-----------------|
|                       | Layer  | 1                   | 2   | 3   | 4   | 5   | 6               |
| Line Pull<br>(lbs)    | 0      | 394                 | 420 | 446 | 472 | 499 | storage<br>only |
|                       | 5,000  | 394                 | 420 | 446 | 472 | 499 |                 |
|                       | 10,000 | 394                 | 420 | 438 | 434 | 437 |                 |
|                       | 15,000 | 296                 | 292 | 287 | 279 | 269 |                 |
|                       | 17,000 | 265                 | 246 | 235 | 221 | 216 |                 |
|                       | 20,000 | 195                 | 183 | 184 | 183 | 181 |                 |
|                       | 25,000 | 145                 | 142 | 137 | 131 | 123 |                 |
|                       | 32,000 | 95                  |     |     |     |     |                 |
| Storage Capacity (ft) |        | 130                 | 139 | 148 | 157 | 166 | 175             |

### Third Drum (for Load hoist)

Wire Rope Diameter = 22 mm

Rated Line Pull = 17,000 lbf (78.5 kN)

Maximum Line Pull = 32,400 lbf (144 kN)

Total Storage Capacity = 1,099 ft (334.9 m)

|                       |        | Line speed (ft/min) |     |     |     |     |                 |
|-----------------------|--------|---------------------|-----|-----|-----|-----|-----------------|
| Layer                 |        | 1                   | 2   | 3   | 4   | 5   | 6               |
| Line Pull<br>(lbs)    | 0      | 394                 | 394 | 394 | 394 | 394 |                 |
|                       | 5,000  | 394                 | 394 | 394 | 394 | 394 |                 |
|                       | 10,000 | 227                 | 227 | 227 | 227 | 227 |                 |
|                       | 15,000 | 147                 | 152 | 161 | 170 | 179 | storage<br>only |
|                       | 17,000 | 142                 | 151 | 160 | 169 | 178 |                 |
|                       | 20,000 | 140                 | 149 | 158 | 167 | 176 |                 |
|                       | 25,000 | 138                 | 147 | 155 | 163 | 164 |                 |
|                       | 30,000 | 136                 | 135 |     |     |     |                 |
| Storage Capacity (ft) |        | 130                 | 139 | 148 | 157 | 166 | 175             |

## Wire Rope Specifications

| Use        | Construction  | No load diameter                           | Length          | Safety Factor | Required minimum breaking strength |
|------------|---|--|-----------------|---------------|------------------------------------|
| Front drum | 6 x 29 Filler IWRC<br>Right hand lay, Regular lay       | 0.888" to 0.905"<br>(22.55 mm to 22.99 mm) | 869'<br>(265 m) | 3.5: 1        | 81,606 lbf<br>(363 kN)             |
| Rear drum  | 6 x 29 Filler IWRC<br>Right hand lay, Regular lay       | 0.888" to 0.905"<br>(22.55 mm to 22.99 mm) | 672'<br>(205 m) | 3.5: 1        | 81,606 lbf<br>(363 kN)             |
| Boom drum  | 6 x 31 P-Warrington seal<br>Right hand lay, Regular lay | 0.646" to 0.658"<br>(16.40 mm to 16.72 mm) | 492'<br>(150 m) | 3.5: 1        | 47,210 lbf<br>(210 kN)             |
| Third drum | 6 x 29 Filler IWRC                                      | 0.888" to 0.905"                           | 476'            |               | 81,606 lbf                         |

## General Dimensions



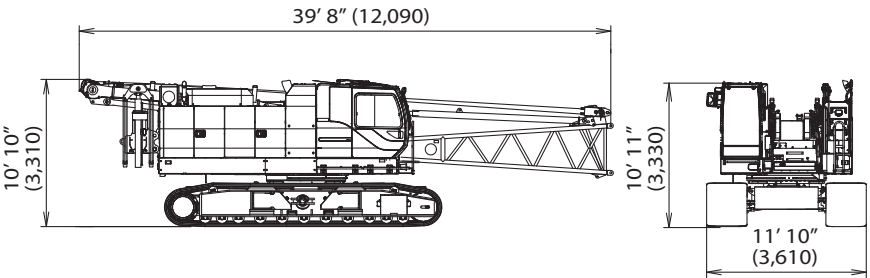


# SPECIFICATIONS

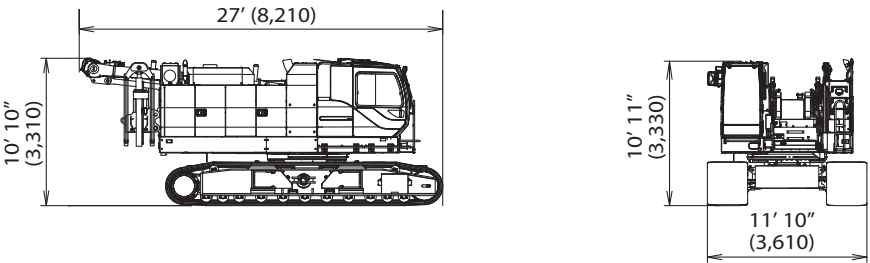
## Dimensions and Weight

Dimensions: ft-in (mm)    Weight: lbs (kg)

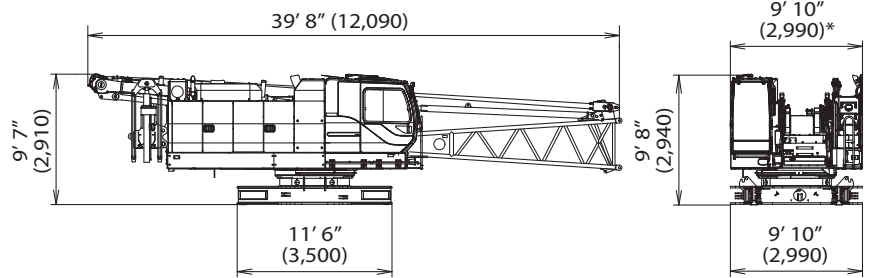
**Base Machine - 1**  
 Weight: 91,700 lbs (41,580 kg)  
 Boom base, gantry, crawlers, self removal unit, and wire ropes (front, rear, and boom hoist)



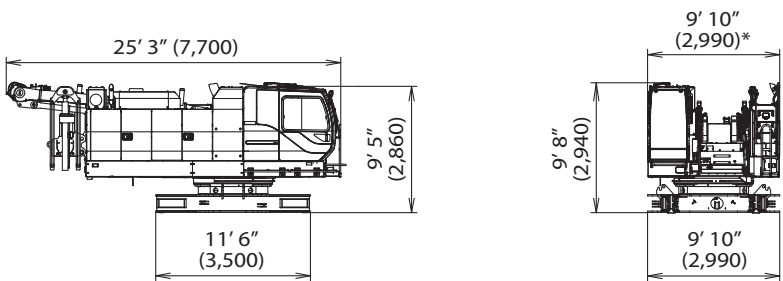
**Base Machine - 2**  
 Weight: 87,500 lbs (39,660 kg)  
 Gantry, crawlers, self removal unit, and wire ropes (front, rear, and boom hoist)



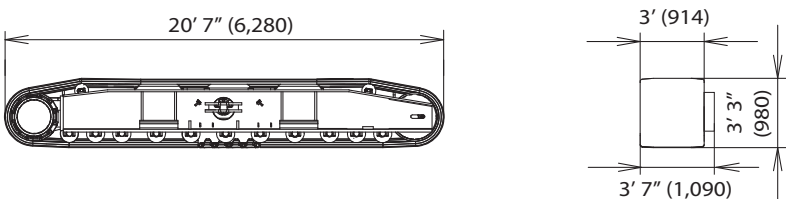
**Base Machine - 3**  
 Weight: 58,000 lbs (26,330 kg)  
 Gantry, crawlers, and wire ropes (front, rear, and boom hoist)



**Base Machine - 4**  
 Weight: 53,800 lbs (24,380 kg)  
 Boom base, gantry, self removal unit, and wire ropes (front, rear, and boom hoist)



**Crawler**  
 Weight: 16,850 lbs (7,640 kg)



\* - 10'5" wide with Catwalks on cab side only.

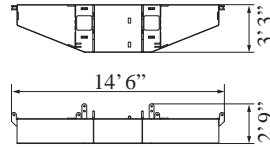
# SPECIFICATIONS

## Dimensions and Weight

Dimensions: ft-in (mm) Weight: lbs (kg)

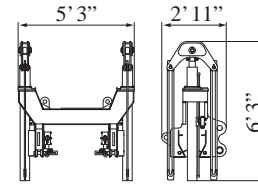
### Counterweight Base

Weight: 20,600 lbs (9,320 kg)



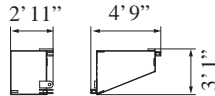
### Self Removal Unit

Weight: 1,900 lbs (860 kg)



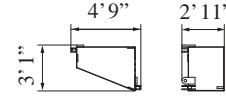
### Counterweight (R)

Weight: 9,250 lbs (4,200 kg)



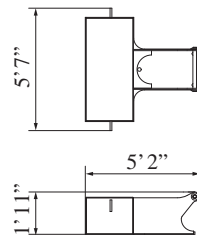
### Counterweight (L)

Weight: 9,250 lbs (4,200 kg)



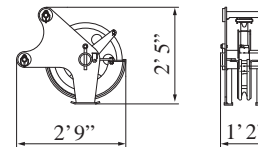
### Carbody Weight

Weight: 7,200 lbs (3,250 kg)



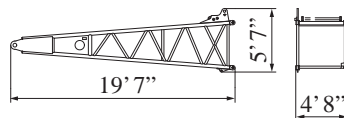
### Auxiliary Sheave

Weight: 320 lbs (145 kg)



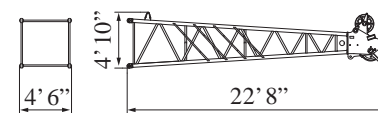
### Boom Base

Weight: 3,000 lbs (1,379 kg)



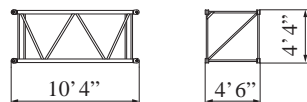
### Boom Tip

Weight: 2,500 lbs (1,126 kg)  
Includes cable roller and guy lines



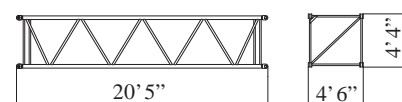
### 10 ft (3.0 m) Insert Boom

Weight: 760 lbs (345 kg)  
Includes cable roller and guy lines



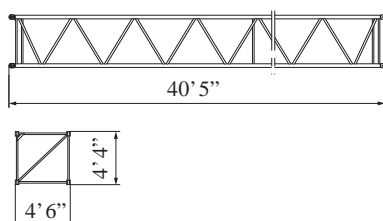
### 20 ft (6.1 m) Insert Boom

Weight: 1,300 lbs (566 kg)  
Includes cable roller and guy lines



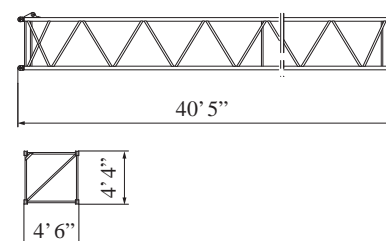
### 40 ft (12.2 m) Insert Boom

Weight: 2,200 lbs (1,009 kg)  
Includes cable roller and guy lines



### 40 ft (12.2 m) Insert Boom (with lug)

Weight: 2,300 lbs (1,024 kg)  
Includes cable roller and guy lines

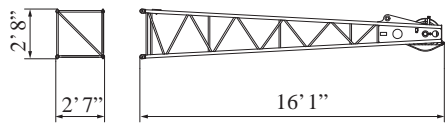


# SPECIFICATIONS

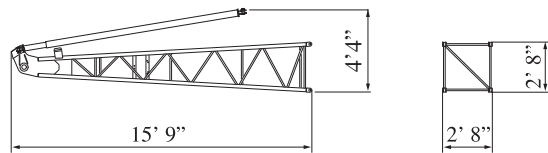
## Dimensions and Weight

Dimensions: ft-in (mm)    Weight: lbs (kg)

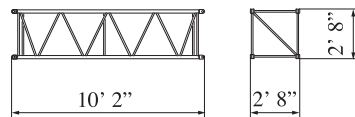
**Jib Tip**  
Weight: 500 lbs (228 kg)  
Includes cable roller.



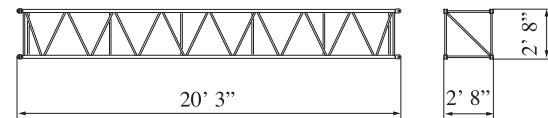
**Jib Base and Strut**  
Weight: 1,100 lbs (485 kg)  
Includes guy line.



**10 ft (3.0 m) Insert Jib**  
Weight: 270 lbs (121 kg)  
Includes cable roller and guy line.



**20 ft (6.1 m) Jib Insert**  
Weight: 460 lbs (209 kg)  
Includes cable roller and guy line.





# SPECIFICATIONS

## Transportation Plan

Refer to pages 10-12

### Shipping plan for 150 ft Boom

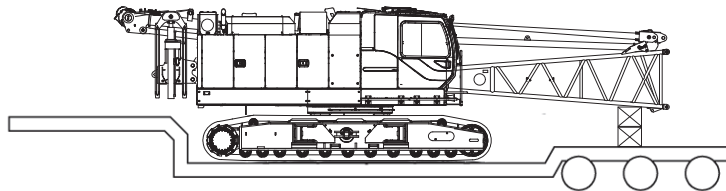
| Description of Item                         | Weight |             | Trailer Loads      |                    |                    |                   |
|---|--------|-------------|--------------------|--------------------|--------------------|-------------------|
|   | lbs    | (kg)        | #1                 | #2                 | #3                 | #4                |
| Base Machine with Boom Base and Crawlers*   | 91,700 | (41,580)    | 1                  |                    |                    |                   |
| Counterweight Base                          | 20,600 | (9,320)     |                    | 1                  |                    |                   |
| Counterweight (L)                           | 9,250  | (4,200)     |                    |                    | 2                  |                   |
| Counterweight ('R)                          | 9,250  | (4,200)     |                    | 1                  | 1                  |                   |
| Carbody Weight                              | 7,200  | (3,250)     |                    |                    |                    | 2                 |
| 10 ft Insert Boom and Guy Line              | 760    | (345)       |                    |                    | 1                  |                   |
| 20 ft Insert Boom and Guy Line              | 1,300  | (566)       |                    | 1                  |                    |                   |
| 40 ft Insert Boom and Guy Line              | 2,200  | (1,009)     |                    |                    | 1                  |                   |
| 40 ft Insert Boom (w/ Lug) and Guy Line (A) | 2,300  | (1,024)     |                    |                    |                    | 1                 |
| Boom Tip and Guy Line                       | 2,500  | (1,126)     |                    | 1                  |                    |                   |
| Jib Base and Guy Line                       | 1,100  | (485)       |                    |                    |                    |                   |
| 10 ft Insert Jib and Guy Line               | 270    | (121)       |                    |                    |                    |                   |
| 20 ft Insert Jib and Guy Line               | 460    | (209)       |                    |                    |                    |                   |
| Jib Tip                                     | 500    | (228)       |                    |                    |                    |                   |
| 75 Ton Block                                | 3,000  | (1,361)     |                    | 1                  |                    |                   |
| 13 Ton Ball                                 | 800    | (365)       |                    | 1                  |                    |                   |
| Ladder Assembly                             | 90     | (41)        |                    |                    |                    | 1                 |
| Support Box                                 | 5,000  | (2,268)     |                    |                    |                    | 1                 |
| Approx. Total Shipping Weight               |        | lbs<br>(kg) | 91,700<br>(41,580) | 37,450<br>(16,938) | 30,710<br>(13,954) | 21,790<br>(9,833) |

\* Third drum is not included. Add 4,200 lbs if third drum is installed.

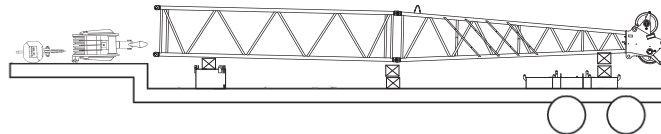
Loads for transportation were targeted at 45,000 lbs, 8' 6" wide, 48' long and 13' 6" high from ground, 48' step deck.

This may vary depending on truck/trailer weight, style of trailer and state law.

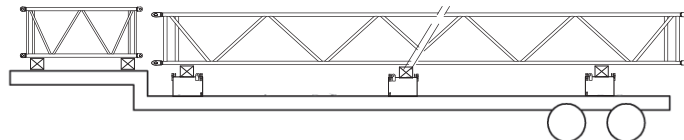
**Trailer #1**



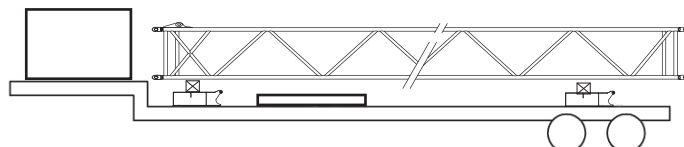
**Trailer #2**



**Trailer #3**

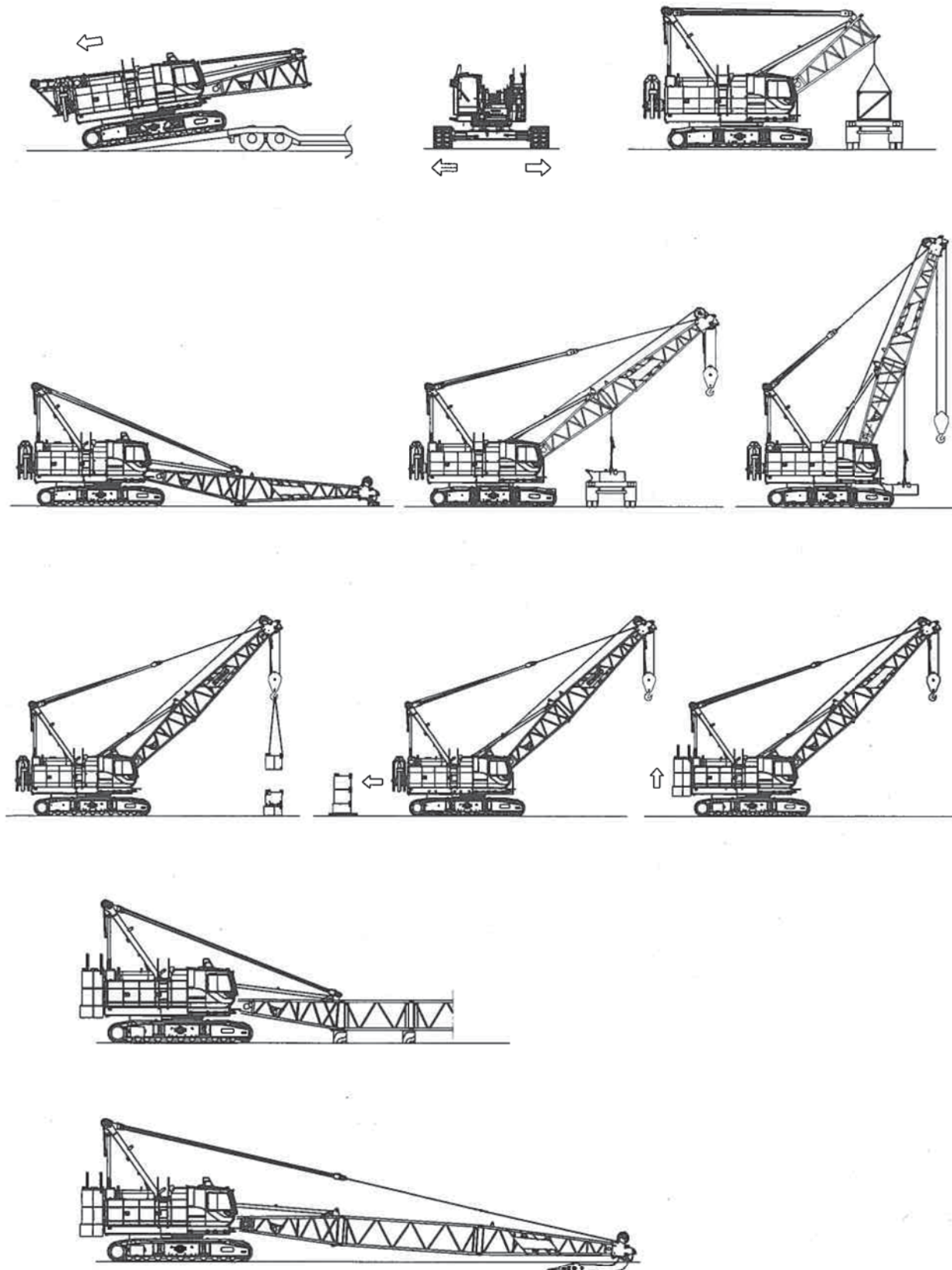


**Trailer #4**



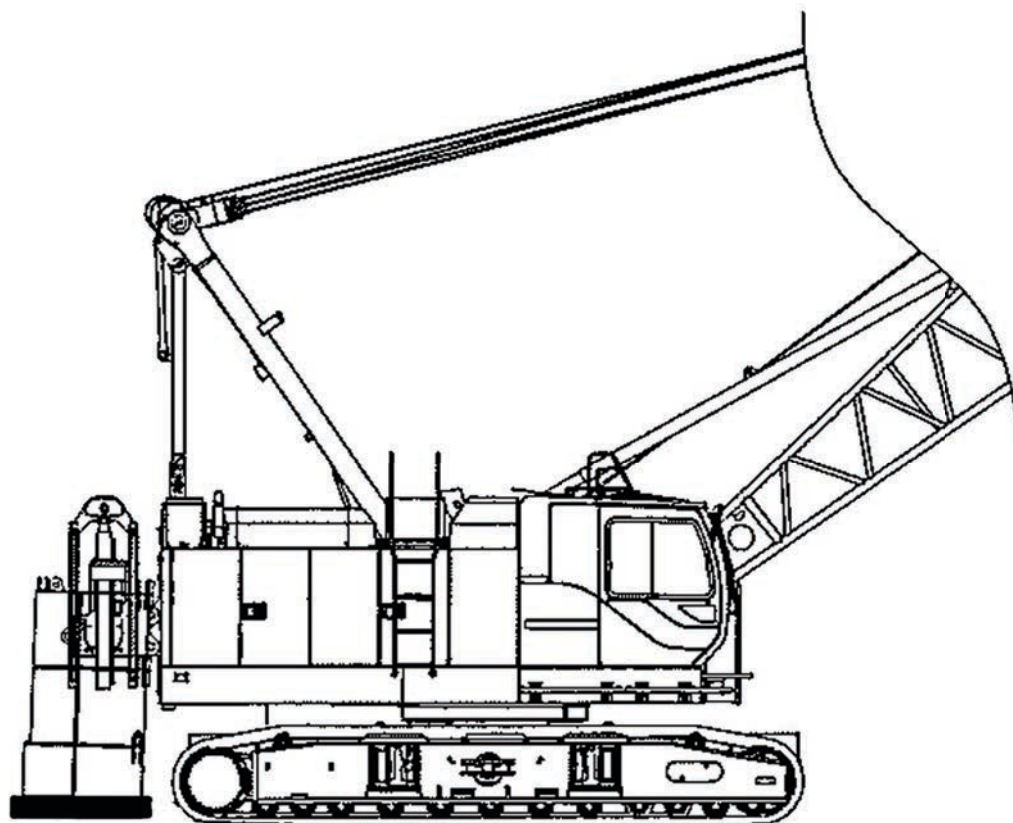
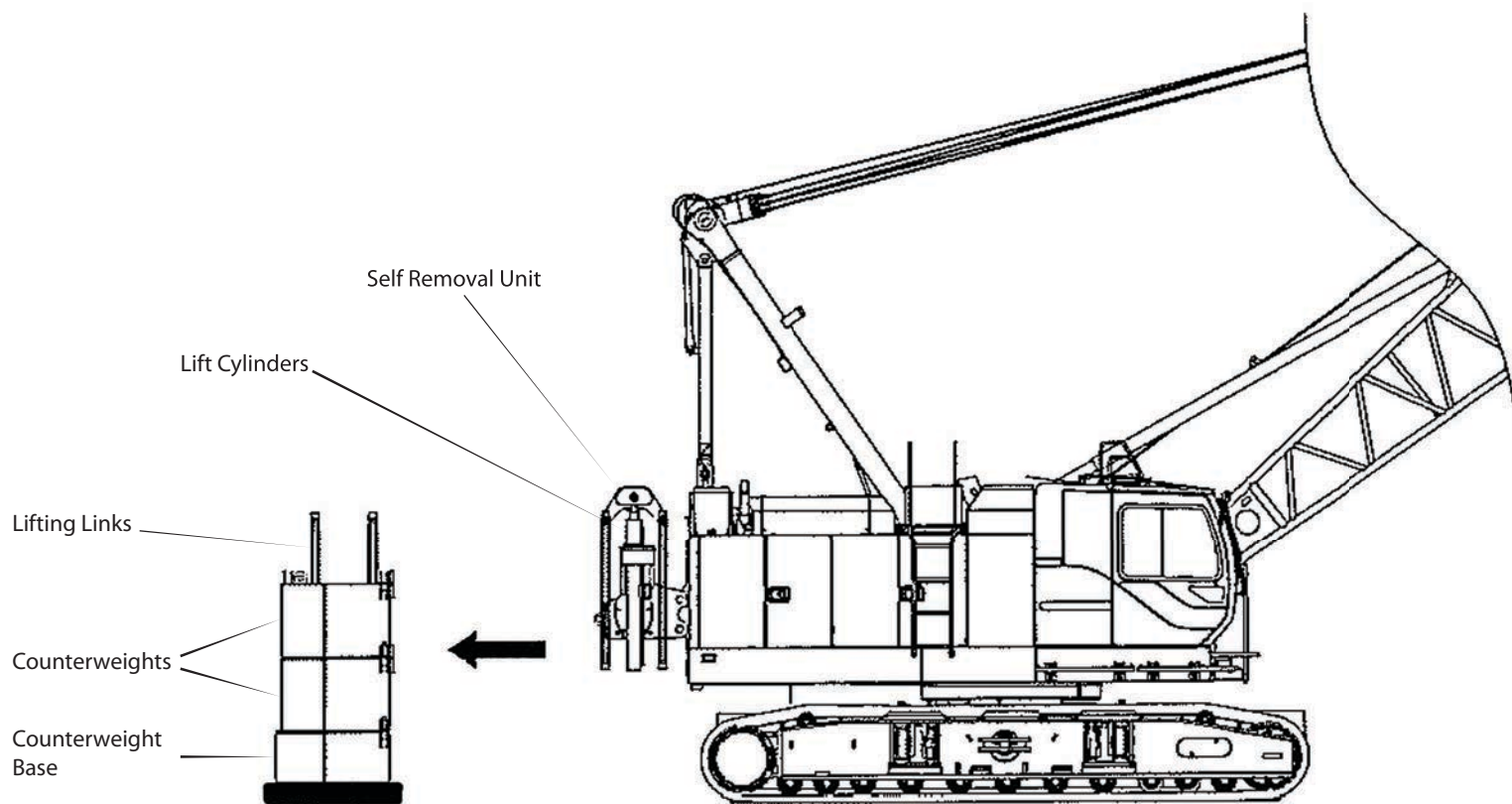
# SPECIFICATIONS

## Self-Assembly Procedure



# SPECIFICATIONS

## Counterweight Self-Removal Device





# SPECIFICATIONS

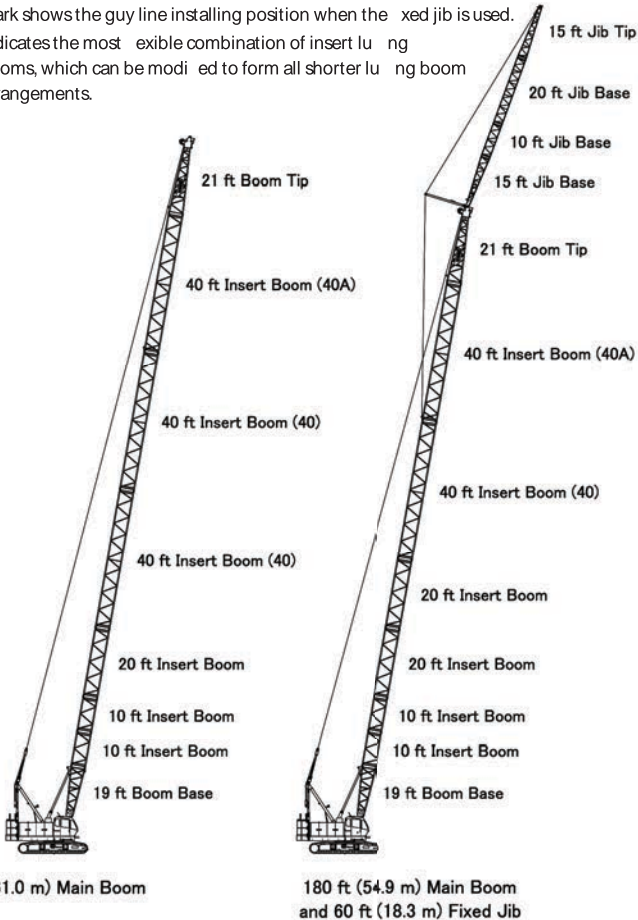
## Boom and Fixed Jib Arrangement

| Boom length ft (m) | Boom arrangement |
|--------------------|------------------|
| 40 (12.2)          |                  |
| 50 (15.2)          |                  |
| 60 (18.3)          | ※                |
| 70 (21.3)          | ※                |
| 80 (24.4)          | ※                |
| 90 (27.4)          | ※                |
| 100 (30.5)         | ※                |
| 110 (33.5)         | ※                |
| 120 (36.6)         | ※                |
| 130 (39.6)         | ※                |
| 140 (42.7)         | ※                |

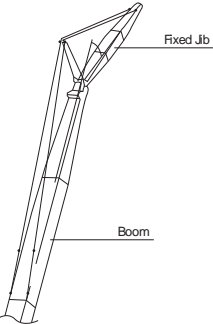
| Boom length ft (m) | Boom arrangement |
|--------------------|------------------|
| 150 (45.7)         | ※                |
| 160 (48.8)         | ※                |
| 170 (51.8)         | ※                |
| 180 (54.9)         | ※                |
| 190 (57.9)         | ※                |
| 200 (61.0)         | ※                |

| Symbol | Boom Length      | Remarks              |
|--------|------------------|----------------------|
|        | 20.0 ft (6.1 m)  | Boom Base            |
|        | 20.0 ft (6.1 m)  | Boom Top             |
|        | 10.0 ft (3.1 m)  | Insert Boom          |
|        | 20.0 ft (6.1 m)  | Insert Boom          |
|        | 40.0 ft (12.2 m) | Insert Boom          |
|        | 40.0 ft (12.2 m) | Insert Boom with lug |

↗ mark shows the guy line installing position when the fixed jib is used.  
 ※ indicates the most flexible combination of insert lugs, which can be modified to form all shorter lugs boom arrangements.



## Fixed Jib Arrangement



| Crane boom length                 | Jib length ft (m) | Jib arrangement |
|-----------------------------------|-------------------|-----------------|
| 80 ft (24.4 m)<br>180 ft (54.9 m) | 30 (9.1)          |                 |
|                                   | 40 (12.2)         |                 |
|                                   | 50 (15.2)         |                 |
|                                   | 60 (18.3)         |                 |

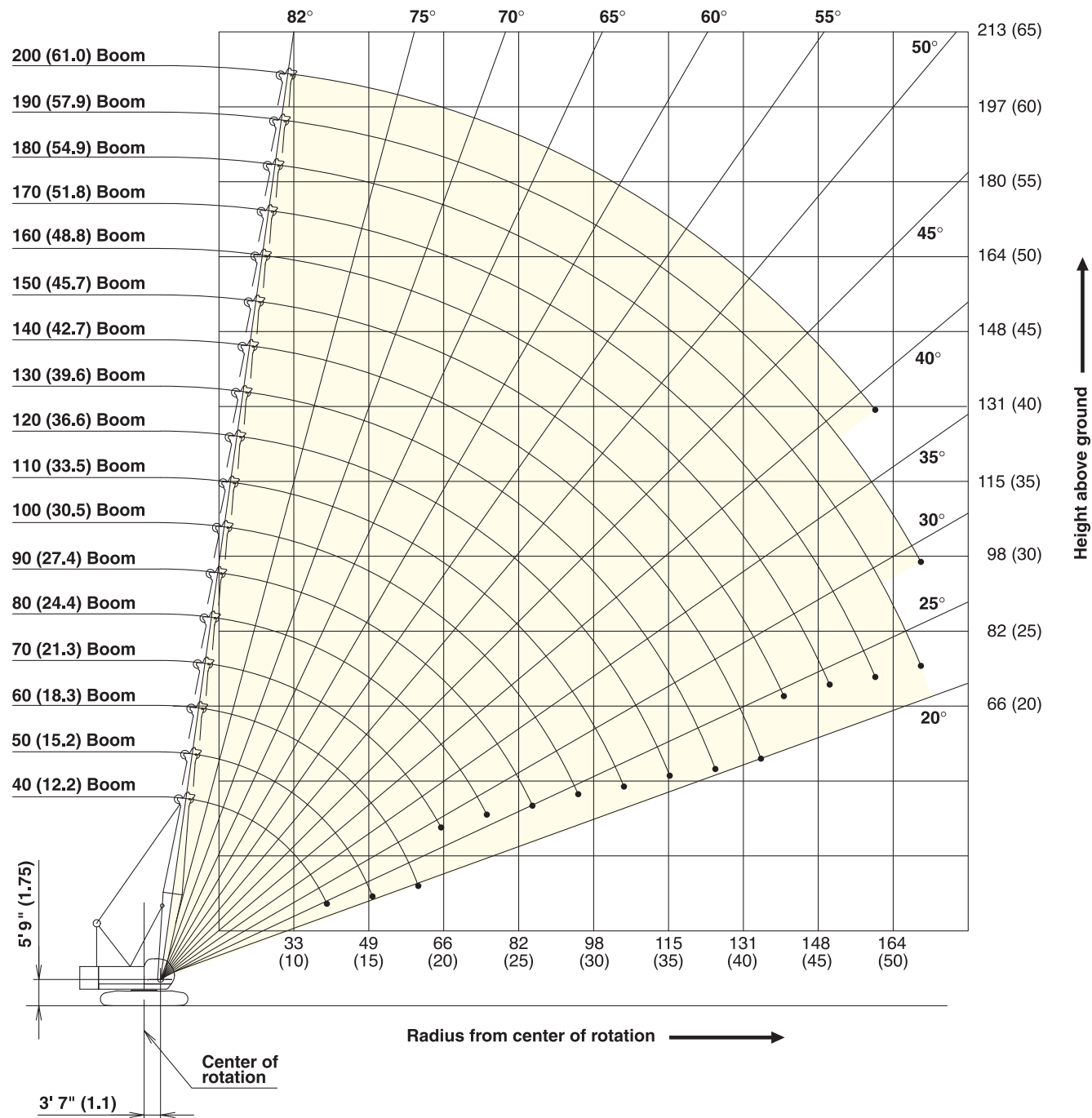
| Symbol | Jib Length    | Remarks    |
|--------|---------------|------------|
|        | 15 ft (4.6 m) | Jib Base   |
|        | 15 ft (4.6 m) | Jib Top    |
|        | 10 ft (3.0 m) | Insert Jib |
|        | 20 ft (6.1 m) | Insert Jib |

# SPECIFICATIONS

## Working Ranges

### Main Boom

Unit : ft (m)

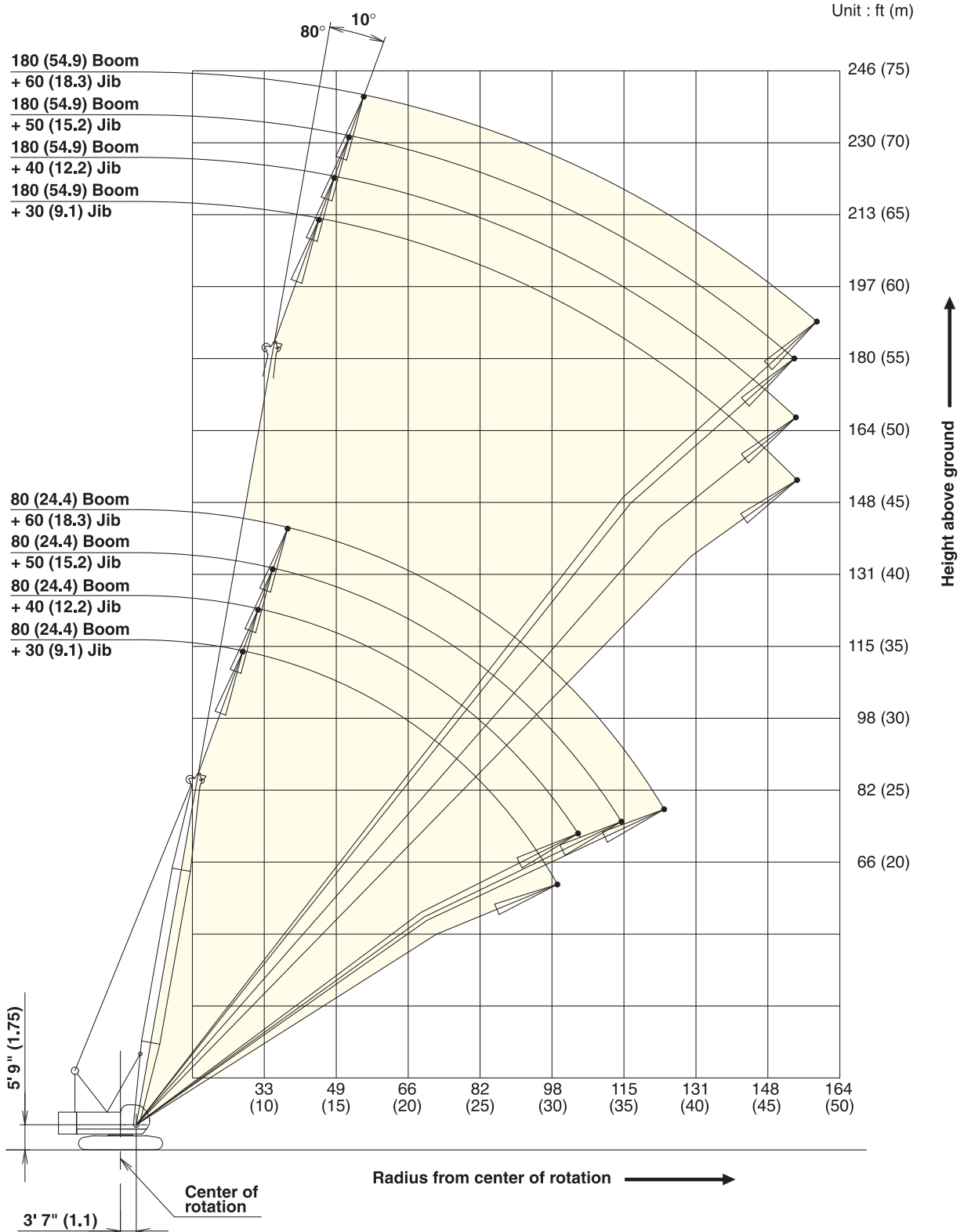


# SPECIFICATIONS

## Working Ranges

Fixed Jib 10°

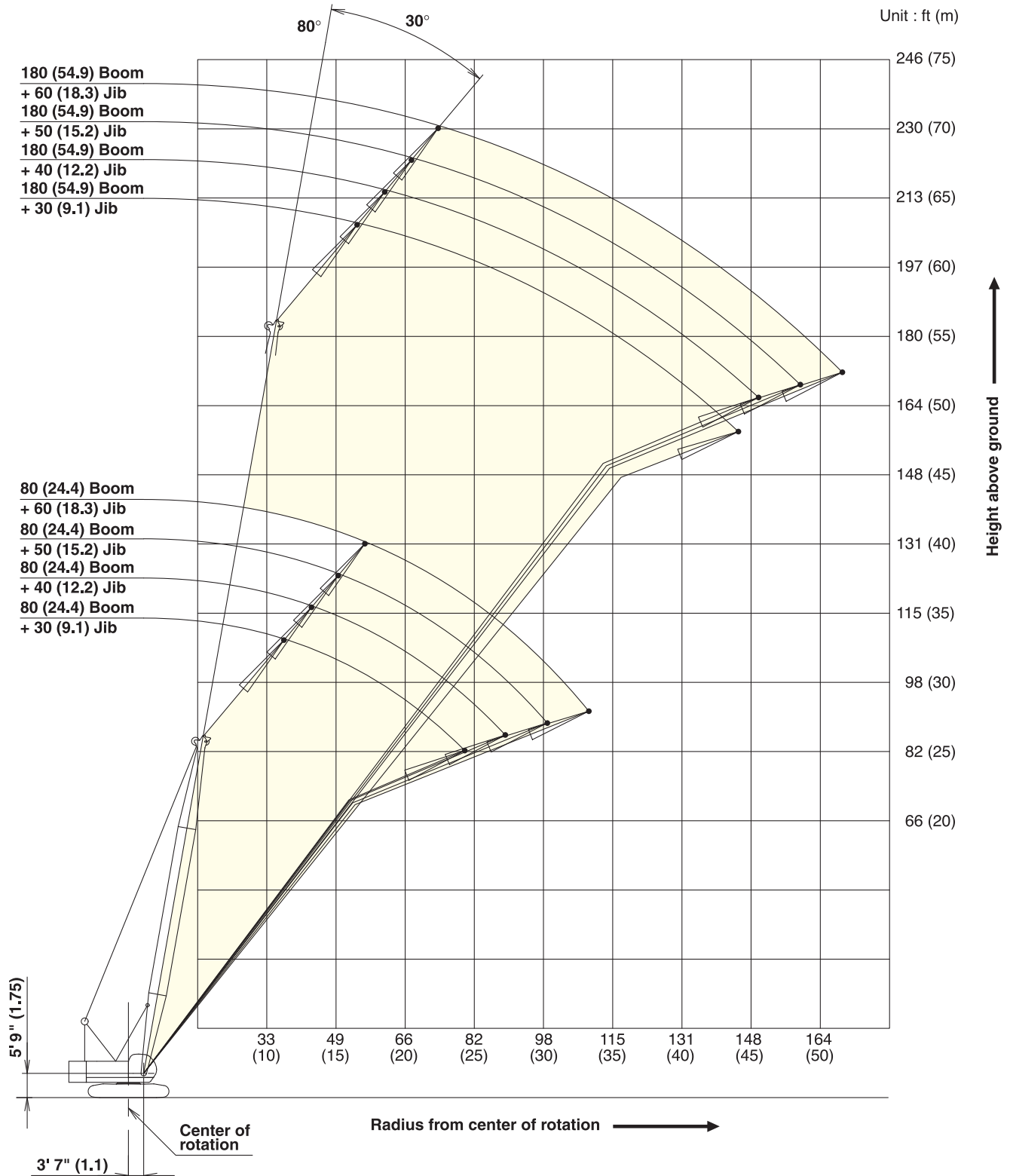
Unit : ft (m)



# SPECIFICATIONS

## Working Ranges

Fixed Jib 30°





## SPECIFICATIONS

## Supplemental Data

- Rated loads included in the charts are the maximum allowable freely suspended loads at a given boom length, boom angle and load radius, and have been determined for the machine standing level on firm supporting surface under ideal operating conditions. The user must limit or de-rate rated loads to allow for adverse conditions (such as soft or uneven ground, out-of-level conditions, wind, side loads, pendulum action, jerking or sudden stopping of loads, inexperience of personnel, multiple machine lifts, and traveling with a load).
- Rated loads do not exceed 75% of minimum tipping loads. Rated loads based on factors other than machine stability such as structural competence are shown by asterisk \* in the charts.
- The machine must be reeved and set-up as stated in the operation manual and all the instruction manuals if these manuals are missing, obtain replacements.
  - The crane must be leveled to within 1% on a firm supporting surface.
  - Boom backstops are required for all boom length.
  - Gantry must be fully raised position for all operations.
- Do not attempt to lift where no radius on load is listed as crane may tip or collapse.
- Attempting to lift more than rated loads may cause machine to tip or collapse. Do not tip machine to determine rated loads.
- Weight of hooks, hook blocks, slings and other lifting devices are a part of the total load. Their total weight must be subtracted from the rated load to obtain the weight that can be lifted.
- When lifting over boom point with jib or auxiliary sheave, rated loads for the boom must be deducted as shown below.

| Jib Length   | Aux Sheave | 30 ft | 40 ft | 50 ft | 60 ft |
|--------------|------------|-------|-------|-------|-------|
| Deduct (lbs) | 320        | 2,400 | 3,200 | 4,200 | 5,200 |

- The total load that can be lifted by jib is limited by rated jib loads.
- Boom lengths for jib mounting are 80 ft (24.4 m) to 180 ft (54.9 m)
- The total load that can be lifted by the auxiliary sheave is the value for 320 lbs deducted from rated load for the boom (without auxiliary sheave installed); however, the auxiliary sheave rated load should not exceed 17,000 lbs.

- Boom lengths that can attach auxiliary sheave are from 40 ft (12.2 m) to 190 ft (57.9 m).
- The boom should be erected over the front of the crawlers, not laterally. When lifting from or lowering to the ground the boom at length of 180 ft (54.9 m) with jib, the blocks for erections must be placed at the end of the crawlers.
- Least stable position is over the side.
- Maximum hoist load for number of reeving parts of line for hoist rope.

## Maximum Load for Main Boom

| No. of Parts of line | 1      | 2      | 3      | 4      | 5      |
|----------------------|--------|--------|--------|--------|--------|
| Maximum Loads (lbs)  | 17,000 | 34,000 | 51,000 | 68,000 | 85,000 |

| No. of Parts of line | 6       | 7       | 8       | 9       | 10      |
|----------------------|---------|---------|---------|---------|---------|
| Maximum Loads (lbs)  | 102,000 | 119,000 | 136,000 | 153,000 | 170,000 |

## Maximum Load for Fixed Jib

| No. of Parts of line | 1      | 2      |
|----------------------|--------|--------|
| Maximum Loads (lbs)  | 17,000 | 24,000 |

## Maximum Load Auxiliary Sheave

| No. of Parts of line | 1      |
|----------------------|--------|
| Maximum Loads (lbs)  | 17,000 |

- Rated loads listed apply only to the machine as originally manufactured and designed by KOBELCO CRANES CO., LTD. Modifications to this machine or use of equipment other than that specified can reduce operating capacity.
- Designed and rated to comply with ANSI Code B30.5.



# SPECIFICATIONS

## Main Boom Lift Capacity

Full Counterweight: 57,600 lbs      Carbody Weight: 14,400

| 40' Boom         |                   |                       | 50' Boom         |                   |                       | 60' Boom         |                   |                       | 70' Boom         |                   |                       | 80' Boom         |                   |                       |
|------------------|-------------------|-----------------------|------------------|-------------------|-----------------------|------------------|-------------------|-----------------------|------------------|-------------------|-----------------------|------------------|-------------------|-----------------------|
| Load Radius (ft) | Boom Angle (deg.) | 360° Rated Load (lbs) | Load Radius (ft) | Boom Angle (deg.) | 360° Rated Load (lbs) | Load Radius (ft) | Boom Angle (deg.) | 360° Rated Load (lbs) | Load Radius (ft) | Boom Angle (deg.) | 360° Rated Load (lbs) | Load Radius (ft) | Boom Angle (deg.) | 360° Rated Load (lbs) |
| 10.0             | 81.7              | 170,000 *             | 12.0             | 81.1              | 166,400 *             | 13.0             | 81.6              | 154,200 *             | 14.0             | 82.0              | 143,600 *             | 16.0             | 81.6              | 126,300 *             |
| 11.0             | 80.3              | 170,000 *             | 13.0             | 79.9              | 154,400 *             | 14.0             | 80.7              | 143,800 *             | 15.0             | 81.2              | 134,500 *             | 17.0             | 80.8              | 119,100 *             |
| 12.0             | 78.8              | 166,600 *             | 14.0             | 78.8              | 144,000 *             | 15.0             | 79.7              | 134,700 *             | 16.0             | 80.3              | 126,500 *             | 18.0             | 80.1              | 112,600 *             |
| 13.0             | 77.4              | 154,600 *             | 15.0             | 77.6              | 134,900 *             | 16.0             | 78.7              | 126,700 *             | 17.0             | 79.5              | 119,300 *             | 19.0             | 79.4              | 105,290               |
| 14.0             | 75.9              | 144,200 *             | 16.0             | 76.4              | 126,900 *             | 17.0             | 77.7              | 119,500 *             | 18.0             | 78.7              | 112,800 *             | 20.0             | 78.6              | 96,930                |
| 15.0             | 74.4              | 135,100 *             | 17.0             | 75.2              | 119,700 *             | 18.0             | 76.8              | 113,000 *             | 19.0             | 77.8              | 105,400               | 22.0             | 77.2              | 83,550                |
| 16.0             | 72.9              | 127,100 *             | 18.0             | 74.0              | 113,200 *             | 19.0             | 75.8              | 105,460               | 20.0             | 77.0              | 97,060                | 24.0             | 75.7              | 73,320                |
| 17.0             | 71.4              | 119,900 *             | 19.0             | 72.8              | 105,660               | 20.0             | 74.8              | 97,130                | 22.0             | 75.3              | 83,700                | 26.0             | 74.2              | 65,230                |
| 18.0             | 69.9              | 113,400 *             | 20.0             | 71.6              | 97,350                | 22.0             | 72.8              | 83,790                | 24.0             | 73.6              | 73,470                | 28.0             | 72.7              | 58,680                |
| 19.0             | 68.3              | 105,820               | 22.0             | 69.2              | 84,010                | 24.0             | 70.8              | 73,560                | 26.0             | 71.9              | 65,380                | 30.0             | 71.2              | 53,260                |
| 20.0             | 66.7              | 97,500                | 24.0             | 66.7              | 73,810                | 26.0             | 68.7              | 65,490                | 28.0             | 70.1              | 58,840                | 32.0             | 69.7              | 48,690                |
| 22.0             | 63.6              | 84,190                | 26.0             | 64.2              | 65,760                | 28.0             | 66.6              | 58,970                | 30.0             | 68.4              | 53,430                | 34.0             | 68.1              | 44,840                |
| 24.0             | 60.3              | 74,000                | 28.0             | 61.6              | 59,230                | 30.0             | 64.5              | 53,570                | 32.0             | 66.6              | 48,890                | 36.0             | 66.6              | 41,490                |
| 26.0             | 56.9              | 65,980                | 30.0             | 58.9              | 53,850                | 32.0             | 62.4              | 49,030                | 34.0             | 64.8              | 45,030                | 38.0             | 65.0              | 38,580                |
| 28.0             | 53.4              | 59,480                | 32.0             | 56.2              | 49,310                | 34.0             | 60.2              | 45,170                | 36.0             | 63.0              | 41,680                | 40.0             | 63.4              | 36,020                |
| 30.0             | 49.7              | 54,100                | 34.0             | 53.3              | 45,480                | 36.0             | 58.0              | 41,840                | 38.0             | 61.1              | 38,800                | 45.0             | 59.3              | 30,820                |
| 32.0             | 45.7              | 49,580                | 36.0             | 50.4              | 42,150                | 38.0             | 55.7              | 38,950                | 40.0             | 59.2              | 36,240                | 50.0             | 55.0              | 26,820                |
| 34.0             | 41.5              | 45,740                | 38.0             | 47.3              | 39,280                | 40.0             | 53.3              | 36,410                | 45.0             | 54.3              | 31,040                | 55.0             | 50.5              | 23,670                |
| 36.0             | 36.9              | 42,460                | 40.0             | 44.1              | 36,750                | 45.0             | 47.0              | 31,230                | 50.0             | 49.0              | 27,070                | 60.0             | 45.6              | 21,140                |
| 38.0             | 31.6              | 39,590                | 45.0             | 34.9              | 31,590                | 50.0             | 40.0              | 27,290                | 55.0             | 43.3              | 23,960                | 65.0             | 40.3              | 19,060                |
| 40.0             | 25.5              | 34,830 *              | 50.0             | 22.7              | 26,890 *              | 55.0             | 31.7              | 24,200                | 60.0             | 36.9              | 21,450                | 70.0             | 34.4              | 17,350                |
|                  |                   |                       |                  |                   |                       | 60.0             | 20.6              | 21,600 *              | 65.0             | 29.3              | 19,420                | 75.0             | 27.3              | 15,890                |
| Reeves           |                   | 10                    | Reeves           |                   | 10                    | Reeves           |                   | 10                    | Reeves           |                   | 9                     | Reeves           |                   | 8                     |
| 90' Boom         |                   |                       | 100' Boom        |                   |                       | 110' Boom        |                   |                       | 120' Boom        |                   |                       | 130' Boom        |                   |                       |
| Load Radius (ft) | Boom Angle (deg.) | 360° Rated Load (lbs) | Load Radius (ft) | Boom Angle (deg.) | 360° Rated Load (lbs) | Load Radius (ft) | Boom Angle (deg.) | 360° Rated Load (lbs) | Load Radius (ft) | Boom Angle (deg.) | 360° Rated Load (lbs) | Load Radius (ft) | Boom Angle (deg.) | 360° Rated Load (lbs) |
| 17.0             | 81.9              | 118,820 *             | 19.0             | 81.5              | 101,850 *             | 20.0             | 81.8              | 92,590 *              | 22.0             | 81.5              | 80,680 *              | 24.0             | 81.3              | 71,200 *              |
| 18.0             | 81.2              | 112,400 *             | 20.0             | 80.9              | 96,800                | 22.0             | 80.7              | 83,260                | 24.0             | 80.5              | 72,950                | 26.0             | 80.4              | 64,610                |
| 19.0             | 80.6              | 105,220               | 22.0             | 79.8              | 83,400                | 24.0             | 79.7              | 73,010                | 26.0             | 79.6              | 64,810                | 28.0             | 79.5              | 58,020                |
| 20.0             | 79.9              | 96,870                | 24.0             | 78.6              | 73,120                | 26.0             | 78.6              | 64,900                | 28.0             | 78.6              | 58,240                | 30.0             | 78.6              | 52,570                |
| 22.0             | 78.6              | 83,480                | 26.0             | 77.4              | 65,010                | 28.0             | 77.5              | 58,330                | 30.0             | 77.6              | 52,800                | 32.0             | 77.7              | 48,010                |
| 24.0             | 77.3              | 73,230                | 28.0             | 76.3              | 58,440                | 30.0             | 76.5              | 52,880                | 32.0             | 76.6              | 48,230                | 34.0             | 76.8              | 44,110                |
| 26.0             | 76.0              | 65,140                | 30.0             | 75.1              | 53,020                | 32.0             | 75.4              | 48,320                | 34.0             | 75.6              | 44,330                | 36.0             | 75.9              | 40,760                |
| 28.0             | 74.7              | 58,570                | 32.0             | 73.9              | 48,450                | 34.0             | 74.3              | 44,440                | 36.0             | 74.7              | 40,980                | 38.0             | 74.9              | 37,830                |
| 30.0             | 73.4              | 53,150                | 34.0             | 72.7              | 44,550                | 36.0             | 73.2              | 41,090                | 38.0             | 73.7              | 38,050                | 40.0             | 74.0              | 35,250                |
| 32.0             | 72.0              | 48,580                | 36.0             | 71.5              | 41,200                | 38.0             | 72.1              | 38,160                | 40.0             | 72.7              | 35,470                | 45.0             | 71.7              | 30,000                |
| 34.0             | 70.7              | 44,700                | 38.0             | 70.3              | 38,290                | 40.0             | 71.0              | 35,600                | 45.0             | 70.1              | 30,220                | 50.0             | 69.4              | 25,970                |
| 36.0             | 69.3              | 41,380                | 40.0             | 69.0              | 35,730                | 45.0             | 68.2              | 30,350                | 50.0             | 67.6              | 26,210                | 55.0             | 67.0              | 22,790                |
| 38.0             | 68.0              | 38,440                | 45.0             | 65.9              | 30,480                | 50.0             | 65.4              | 26,340                | 55.0             | 65.0              | 23,010                | 60.0             | 64.6              | 20,210                |
| 40.0             | 66.6              | 35,890                | 50.0             | 62.7              | 26,470                | 55.0             | 62.5              | 23,170                | 60.0             | 62.3              | 20,450                | 65.0             | 62.1              | 18,070                |
| 45.0             | 63.0              | 30,660                | 55.0             | 59.5              | 23,320                | 60.0             | 59.5              | 20,610                | 65.0             | 59.5              | 18,320                | 70.0             | 59.6              | 16,290                |
| 50.0             | 59.4              | 26,670                | 60.0             | 56.1              | 20,740                | 65.0             | 56.4              | 18,490                | 70.0             | 56.7              | 16,530                | 75.0             | 57.0              | 14,770                |
| 55.0             | 55.6              | 23,520                | 65.0             | 52.5              | 18,620                | 70.0             | 53.2              | 16,710                | 75.0             | 53.8              | 15,010                | 80.0             | 54.3              | 13,470                |
| 60.0             | 51.6              | 20,960                | 70.0             | 48.8              | 16,860                | 75.0             | 49.9              | 15,210                | 80.0             | 50.8              | 13,710                | 85.0             | 51.5              | 12,320                |
| 65.0             | 47.4              | 18,870                | 75.0             | 44.8              | 15,360                | 80.0             | 46.4              | 13,910                | 85.0             | 47.6              | 12,580                | 90.0             | 48.6              | 11,330                |
| 70.0             | 42.9              | 17,100                | 80.0             | 40.6              | 14,080                | 85.0             | 42.6              | 12,800                | 90.0             | 44.3              | 11,590                | 95.0             | 45.6              | 10,440                |
| 75.0             | 37.9              | 15,630                | 85.0             | 35.9              | 12,980                | 90.0             | 38.6              | 11,830                | 95.0             | 40.7              | 10,730                | 100.0            | 42.4              | 9,670                 |
| 80.0             | 32.3              | 14,370                | 90.0             | 30.6              | 12,010                | 95.0             | 34.2              | 10,970                | 100.0            | 36.9              | 9,960                 | 105.0            | 39.0              | 8,990                 |
| 85.0             | 25.7              | 13,310                | 95.0             | 24.3              | 11,190                | 100.0            | 29.2              | 10,250                | 105.0            | 32.7              | 9,280                 | 110.0            | 35.4              | 8,390                 |
|                  |                   |                       |                  |                   |                       | 105.0            | 23.2              | 9,610                 | 110.0            | 27.9              | 8,680                 | 115.0            | 31.3              | 7,840                 |
|                  |                   |                       |                  |                   |                       |                  |                   |                       | 115.0            | 22.2              | 8,170                 | 120.0            | 26.7              | 7,360                 |
|                  |                   |                       |                  |                   |                       |                  |                   |                       |                  |                   |                       | 125.0            | 21.2              | 6,940                 |
| Reeves           |                   | 7                     | Reeves           |                   | 6                     | Reeves           |                   | 6                     | Reeves           |                   | 5                     | Reeves           |                   | 5                     |

Note: Designed and rated to comply with ANSI Code B30.5  
Capacities based on factors other than machine stability such as structural competence are shown by asterisk \* in the charts.  
Refer to notes on page 20.

# SPECIFICATIONS

## Main Boom Lift Capacity

Full Counterweight: 57,600 lbs      Carbody Weight: 14,400

| 140' Boom        |                   |                       | 150' Boom        |                   |                       | 160' Boom        |                   |                       | 170' Boom        |                   |                       | 180' Boom        |                   |                       |
|------------------|-------------------|-----------------------|------------------|-------------------|-----------------------|------------------|-------------------|-----------------------|------------------|-------------------|-----------------------|------------------|-------------------|-----------------------|
| Load Radius (ft) | Boom Angle (deg.) | 360° Rated Load (lbs) | Load Radius (ft) | Boom Angle (deg.) | 360° Rated Load (lbs) | Load Radius (ft) | Boom Angle (deg.) | 360° Rated Load (lbs) | Load Radius (ft) | Boom Angle (deg.) | 360° Rated Load (lbs) | Load Radius (ft) | Boom Angle (deg.) | 360° Rated Load (lbs) |
| 24.0             | 81.9              | 61,720 *              | 26.0             | 81.7              | 52,680 *              | 28.0             | 81.5              | 44,090 *              | 28.0             | 82.0              | 38,800 *              | 30.0             | 81.8              | 33,730 *              |
| 26.0             | 81.1              | 60,840 *              | 28.0             | 80.9              | 51,800 *              | 30.0             | 80.7              | 43,430 *              | 30.0             | 81.3              | 38,130 *              | 32.0             | 81.1              | 33,060 *              |
| 28.0             | 80.2              | 57,980                | 30.0             | 80.1              | 51,140 *              | 32.0             | 80.0              | 42,760 *              | 32.0             | 80.6              | 37,470 *              | 34.0             | 80.5              | 32,620 *              |
| 30.0             | 79.4              | 52,530                | 32.0             | 79.3              | 47,810                | 34.0             | 79.3              | 42,100 *              | 34.0             | 79.9              | 37,030 *              | 36.0             | 79.8              | 31,960 *              |
| 32.0             | 78.6              | 47,950                | 34.0             | 78.6              | 43,890                | 36.0             | 78.6              | 40,520                | 36.0             | 79.2              | 36,370 *              | 38.0             | 79.2              | 31,520 *              |
| 34.0             | 77.7              | 44,040                | 36.0             | 77.8              | 40,540                | 38.0             | 77.8              | 37,560                | 38.0             | 78.6              | 35,710 *              | 40.0             | 78.5              | 31,080 *              |
| 36.0             | 76.9              | 40,670                | 38.0             | 77.0              | 37,610                | 40.0             | 77.1              | 34,980                | 40.0             | 77.9              | 34,780                | 45.0             | 76.9              | 29,250                |
| 38.0             | 76.0              | 37,740                | 40.0             | 76.2              | 35,030                | 45.0             | 75.2              | 29,710                | 45.0             | 76.1              | 29,510                | 50.0             | 75.3              | 25,220                |
| 40.0             | 75.2              | 35,160                | 45.0             | 74.2              | 29,760                | 50.0             | 73.4              | 25,680                | 50.0             | 74.4              | 25,460                | 55.0             | 73.6              | 22,000                |
| 45.0             | 73.1              | 29,910                | 50.0             | 72.2              | 25,720                | 55.0             | 71.5              | 22,480                | 55.0             | 72.6              | 22,260                | 60.0             | 72.0              | 19,400                |
| 50.0             | 70.9              | 25,880                | 55.0             | 70.2              | 22,530                | 60.0             | 69.6              | 19,880                | 60.0             | 70.9              | 19,660                | 65.0             | 70.3              | 17,260                |
| 55.0             | 68.7              | 22,680                | 60.0             | 68.2              | 19,950                | 65.0             | 67.7              | 17,720                | 65.0             | 69.1              | 17,520                | 70.0             | 68.6              | 15,450                |
| 60.0             | 66.5              | 20,100                | 65.0             | 66.1              | 17,810                | 70.0             | 65.7              | 15,930                | 70.0             | 67.2              | 15,710                | 75.0             | 66.8              | 13,910                |
| 65.0             | 64.3              | 17,960                | 70.0             | 64.0              | 16,000                | 75.0             | 63.7              | 14,390                | 75.0             | 65.4              | 14,170                | 80.0             | 65.1              | 12,560                |
| 70.0             | 62.0              | 16,150                | 75.0             | 61.8              | 14,480                | 80.0             | 61.7              | 13,070                | 80.0             | 63.5              | 12,850                | 85.0             | 63.3              | 11,410                |
| 75.0             | 59.6              | 14,630                | 80.0             | 59.6              | 13,160                | 85.0             | 59.7              | 11,920                | 85.0             | 61.6              | 11,680                | 90.0             | 61.5              | 10,400                |
| 80.0             | 57.2              | 13,310                | 85.0             | 57.4              | 12,010                | 90.0             | 57.6              | 10,910                | 90.0             | 59.7              | 10,670                | 95.0             | 59.7              | 9,500                 |
| 85.0             | 54.7              | 12,160                | 90.0             | 55.1              | 11,000                | 95.0             | 55.4              | 10,000                | 95.0             | 57.7              | 9,780                 | 100.0            | 57.8              | 8,700                 |
| 90.0             | 52.2              | 11,170                | 95.0             | 52.7              | 10,110                | 100.0            | 53.2              | 9,210                 | 100.0            | 55.7              | 8,990                 | 105.0            | 55.9              | 8,000                 |
| 95.0             | 49.5              | 10,290                | 100.0            | 50.3              | 9,320                 | 105.0            | 50.9              | 8,500                 | 105.0            | 53.6              | 8,260                 | 110.0            | 54.0              | 7,340                 |
| 100.0            | 46.8              | 9,500                 | 105.0            | 47.7              | 8,640                 | 110.0            | 48.6              | 7,870                 | 110.0            | 51.5              | 7,620                 | 115.0            | 52.0              | 6,760                 |
| 105.0            | 43.9              | 8,790                 | 110.0            | 45.1              | 8,000                 | 115.0            | 46.1              | 7,290                 | 115.0            | 49.3              | 7,050                 | 120.0            | 49.9              | 6,230                 |
| 110.0            | 40.8              | 8,170                 | 115.0            | 42.3              | 7,420                 | 120.0            | 43.6              | 6,760                 | 120.0            | 47.0              | 6,520                 | 125.0            | 47.8              | 5,700                 |
| 115.0            | 37.5              | 7,620                 | 120.0            | 39.4              | 6,920                 | 125.0            | 40.9              | 6,280                 | 125.0            | 44.7              | 6,040                 | 130.0            | 45.6              | 5,220                 |
| 120.0            | 34.0              | 7,120                 | 125.0            | 36.2              | 6,450                 | 130.0            | 38.1              | 5,860                 | 130.0            | 42.2              | 5,570                 | 135.0            | 43.3              | 4,780                 |
| 125.0            | 30.1              | 6,650                 | 130.0            | 32.8              | 6,040                 | 135.0            | 35.0              | 5,440                 | 135.0            | 39.6              | 5,150                 | 140.0            | 40.9              | 4,380                 |
| 130.0            | 25.7              | 6,260                 | 135.0            | 29.1              | 5,660                 | 140.0            | 31.8              | 5,070                 | 140.0            | 36.9              | 4,760                 | 145.0            | 38.4              | 4,030                 |
| 135.0            | 20.5              | 5,900                 | 140.0            | 24.8              | 5,330                 | 145.0            | 28.1              | 4,710                 | 145.0            | 34.0              | 4,380                 | 150.0            | 35.8              | 3,680                 |
|                  |                   |                       |                  |                   |                       | 150.0            | 24.0              | 4,380                 | 150.0            | 30.8              | 4,050                 | 155.0            | 33.0              | 3,370                 |
|                  |                   |                       |                  |                   |                       |                  |                   |                       | 155.0            | 27.3              | 3,760                 | 160.0            | 29.9              | 3,100                 |
|                  |                   |                       |                  |                   |                       |                  |                   |                       | 160.0            | 23.3              | 3,500                 | 165.0            | 26.5              | 2,840                 |
|                  |                   |                       |                  |                   |                       |                  |                   |                       |                  |                   |                       | 170.0            | 22.6              | 2,620                 |
| Reeves           |                   |                       | 4                |                   |                       | Reeves           |                   |                       | 4                |                   |                       | Reeves           |                   |                       |
| 190' Boom        |                   |                       | 200' Boom        |                   |                       |                  |                   |                       |                  |                   |                       |                  |                   |                       |
| Load Radius (ft) | Boom Angle (deg.) | 360° Rated Load (lbs) | Load Radius (ft) | Boom Angle (deg.) | 360° Rated Load (lbs) |                  |                   |                       |                  |                   |                       |                  |                   |                       |
| 32.0             | 81.6              | 29,540 *              | 34.0             | 81.4              | 25,790 *              |                  |                   |                       |                  |                   |                       |                  |                   |                       |
| 34.0             | 81.0              | 28,880 *              | 36.0             | 80.9              | 25,350 *              |                  |                   |                       |                  |                   |                       |                  |                   |                       |
| 36.0             | 80.4              | 28,430 *              | 38.0             | 80.3              | 24,910 *              |                  |                   |                       |                  |                   |                       |                  |                   |                       |
| 38.0             | 79.8              | 27,990 *              | 40.0             | 79.7              | 24,470 *              |                  |                   |                       |                  |                   |                       |                  |                   |                       |
| 40.0             | 79.2              | 27,550 *              | 45.0             | 78.2              | 23,360 *              |                  |                   |                       |                  |                   |                       |                  |                   |                       |
| 45.0             | 77.6              | 26,450 *              | 50.0             | 76.8              | 22,480 *              |                  |                   |                       |                  |                   |                       |                  |                   |                       |
| 50.0             | 76.1              | 25,300                | 55.0             | 75.3              | 21,380 *              |                  |                   |                       |                  |                   |                       |                  |                   |                       |
| 55.0             | 74.5              | 22,110                | 60.0             | 73.8              | 19,310                |                  |                   |                       |                  |                   |                       |                  |                   |                       |
| 60.0             | 72.9              | 19,510                | 65.0             | 72.3              | 17,150                |                  |                   |                       |                  |                   |                       |                  |                   |                       |
| 65.0             | 71.3              | 17,350                | 70.0             | 70.8              | 15,320                |                  |                   |                       |                  |                   |                       |                  |                   |                       |
| 70.0             | 69.7              | 15,540                | 75.0             | 69.3              | 13,770                |                  |                   |                       |                  |                   |                       |                  |                   |                       |
| 75.0             | 68.1              | 13,990                | 80.0             | 67.7              | 12,430                |                  |                   |                       |                  |                   |                       |                  |                   |                       |
| 80.0             | 66.5              | 12,650                | 85.0             | 66.2              | 11,260                |                  |                   |                       |                  |                   |                       |                  |                   |                       |
| 85.0             | 64.8              | 11,500                | 90.0             | 64.6              | 10,250                |                  |                   |                       |                  |                   |                       |                  |                   |                       |
| 90.0             | 63.2              | 10,470                | 95.0             | 63.0              | 9,340                 |                  |                   |                       |                  |                   |                       |                  |                   |                       |
| 95.0             | 61.4              | 9,560                 | 100.0            | 61.4              | 8,530                 |                  |                   |                       |                  |                   |                       |                  |                   |                       |
| 100.0            | 59.7              | 8,770                 | 105.0            | 59.7              | 7,820                 |                  |                   |                       |                  |                   |                       |                  |                   |                       |
| 105.0            | 57.9              | 8,040                 | 110.0            | 58.1              | 7,160                 |                  |                   |                       |                  |                   |                       |                  |                   |                       |
| 110.0            | 56.1              | 7,400                 | 115.0            | 56.3              | 6,560                 |                  |                   |                       |                  |                   |                       |                  |                   |                       |
| 115.0            | 54.3              | 6,810                 | 120.0            | 54.6              | 5,970                 |                  |                   |                       |                  |                   |                       |                  |                   |                       |
| 120.0            | 52.4              | 6,280                 | 125.0            | 52.8              | 5,440                 |                  |                   |                       |                  |                   |                       |                  |                   |                       |
| 125.0            | 50.5              | 5,750                 | 130.0            | 51.0              | 4,960                 |                  |                   |                       |                  |                   |                       |                  |                   |                       |
| 130.0            | 48.5              | 5,260                 | 135.0            | 49.1              | 4,510                 |                  |                   |                       |                  |                   |                       |                  |                   |                       |
| 135.0            | 46.4              | 4,800                 | 140.0            | 47.2              | 4,100                 |                  |                   |                       |                  |                   |                       |                  |                   |                       |
| 140.0            | 44.3              | 4,400                 | 145.0            | 45.2              | 3,700                 |                  |                   |                       |                  |                   |                       |                  |                   |                       |
| 145.0            | 42.1              | 4,010                 | 150.0            | 43.1              | 3,350                 |                  |                   |                       |                  |                   |                       |                  |                   |                       |
| 150.0            | 39.8              | 3,680                 | 155.0            | 41.0              | 3,040                 |                  |                   |                       |                  |                   |                       |                  |                   |                       |
| 155.0            | 37.4              | 3,350                 | 160.0            | 38.7              | 2,730                 |                  |                   |                       |                  |                   |                       |                  |                   |                       |
| 160.0            | 34.8              | 3,040                 |                  |                   |                       |                  |                   |                       |                  |                   |                       |                  |                   |                       |
| 165.0            | 32.0              | 2,770                 |                  |                   |                       |                  |                   |                       |                  |                   |                       |                  |                   |                       |
| 170.0            | 29.1              | 2,510                 |                  |                   |                       |                  |                   |                       |                  |                   |                       |                  |                   |                       |
| Reeves           |                   |                       | 2                |                   |                       |                  |                   |                       |                  |                   |                       |                  |                   |                       |

Note: Designed and rated to comply with ANSI Code B30.5  
Capacities based on factors other than machine stability such as structural competence are shown by asterisk \* in the charts.  
Refer to notes on page 20.

## SPECIFICATIONS

## Fixed Jib Lift Capacity

Full Counterweight: 57,600 lbs    Carbody Weight: 14,400

| 80' Boom         |                     |                  |                   |                  |                     |                  |                   |                  |                     |                  |                   |                  |                     |                  |                   |                  |                  |
|------------------|---------------------|------------------|-------------------|------------------|---------------------|------------------|-------------------|------------------|---------------------|------------------|-------------------|------------------|---------------------|------------------|-------------------|------------------|------------------|
| Load Radius (ft) | 30 ft Jib           |                  |                   |                  | 40 ft Jib           |                  |                   |                  | 50 ft Jib           |                  |                   |                  | 60 ft Jib           |                  |                   |                  | Load Radius (ft) |
|                  | Offset Angle (deg.) |                  |                   |                  | Offset Angle (deg.) |                  |                   |                  | Offset Angle (deg.) |                  |                   |                  | Offset Angle (deg.) |                  |                   |                  |                  |
|                  | 10                  |                  | 30                |                  | 10                  |                  | 30                |                  | 10                  |                  | 30                |                  | 10                  |                  | 30                |                  |                  |
|                  | Boom Angle (deg.)   | Rated Load (lbs) | Boom Angle (deg.) | Rated Load (lbs) | Boom Angle (deg.)   | Rated Load (lbs) | Boom Angle (deg.) | Rated Load (lbs) | Boom Angle (deg.)   | Rated Load (lbs) | Boom Angle (deg.) | Rated Load (lbs) | Boom Angle (deg.)   | Rated Load (lbs) | Boom Angle (deg.) | Rated Load (lbs) |                  |
| 30               | 79.3                | 24,000*          |                   |                  |                     |                  |                   |                  |                     |                  |                   |                  |                     |                  |                   |                  | 30               |
| 32               | 78.0                | 24,000*          |                   |                  |                     |                  |                   |                  |                     |                  |                   |                  |                     |                  |                   |                  | 32               |
| 34               | 77.0                | 24,000*          |                   |                  | 79.3                | 24,000*          |                   |                  |                     |                  |                   |                  |                     |                  |                   |                  | 34               |
| 36               | 75.9                | 24,000*          |                   |                  | 78.3                | 24,000*          |                   |                  |                     |                  |                   |                  |                     |                  |                   |                  | 36               |
| 38               | 74.9                | 24,000*          | 79.6              | 20,230*          | 77.4                | 24,000*          |                   |                  | 79.3                | 20,000*          |                   |                  |                     |                  |                   |                  | 38               |
| 40               | 73.8                | 24,000*          | 78.5              | 19,730*          | 76.4                | 24,000*          |                   |                  | 78.4                | 20,000*          |                   |                  | 79.8                | 18,000*          |                   |                  | 40               |
| 45               | 71.1                | 24,000*          | 75.7              | 18,600*          | 73.9                | 24,000*          | 79.7              | 15,360*          | 76.1                | 20,000*          |                   |                  | 77.7                | 17,940*          |                   |                  | 45               |
| 50               | 68.3                | 24,000*          | 72.8              | 17,610*          | 71.4                | 22,150*          | 77.1              | 14,480*          | 73.8                | 18,540*          |                   |                  | 75.6                | 16,330*          |                   |                  | 50               |
| 55               | 65.3                | 23,890           | 69.7              | 16,710*          | 68.7                | 20,280*          | 74.3              | 13,640*          | 71.3                | 16,950*          | 78.0              | 11,080*          | 73.3                | 14,900*          |                   |                  | 55               |
| 60               | 62.3                | 21,340           | 66.7              | 15,960*          | 66.1                | 18,800*          | 71.6              | 12,980*          | 68.9                | 15,690*          | 75.5              | 10,490*          | 71.2                | 13,750*          | 78.7              | 8,950*           | 60               |
| 65               | 59.3                | 19,200           | 63.6              | 15,290*          | 63.4                | 17,520*          | 68.8              | 12,360*          | 66.5                | 14,610*          | 73.0              | 9,980*           | 69.0                | 12,780*          | 76.4              | 8,480*           | 65               |
| 70               | 56.2                | 17,410           | 60.3              | 14,700*          | 60.6                | 16,400*          | 65.9              | 11,830*          | 64.0                | 13,660*          | 70.4              | 9,540*           | 66.7                | 11,900*          | 74.1              | 8,060*           | 70               |
| 75               | 52.8                | 15,780           | 56.7              | 14,150*          | 57.6                | 15,360*          | 62.7              | 11,350*          | 61.3                | 12,760*          | 67.6              | 9,100*           | 64.2                | 11,110*          | 71.5              | 7,670*           | 75               |
| 80               | 49.3                | 14,460           | 53.1              | 13,710*          | 54.6                | 14,520*          | 59.6              | 10,930*          | 58.7                | 12,030*          | 64.8              | 8,730*           | 61.9                | 10,440*          | 69.0              | 7,340*           | 80               |
| 85               | 45.7                | 13,330           |                   |                  | 51.5                | 13,470           | 56.3              | 10,560*          | 56.0                | 11,390*          | 62.0              | 8,420*           | 59.5                | 9,850*           | 66.5              | 7,030*           | 85               |
| 90               | 41.8                | 12,320           |                   |                  | 48.3                | 12,450           | 52.9              | 10,250*          | 53.2                | 10,800*          | 59.0              | 8,130*           | 57.0                | 9,320*           | 63.9              | 6,760*           | 90               |
| 95               | 37.2                | 11,370           |                   |                  | 44.6                | 11,500           |                   |                  | 50.0                | 10,250*          | 55.6              | 7,840*           | 54.2                | 8,810*           | 60.9              | 6,500*           | 95               |
| 100              | 32.4                | 10,600           |                   |                  | 40.8                | 10,710           |                   |                  | 46.9                | 9,780*           | 52.3              | 7,620*           | 51.5                | 8,390*           | 58.1              | 6,280*           | 100              |
| 105              |                     |                  |                   |                  | 36.7                | 10,000           |                   |                  | 43.6                | 9,360*           |                   |                  | 48.7                | 8,020*           | 55.0              | 6,100*           | 105              |
| 110              |                     |                  |                   |                  |                     |                  |                   |                  | 40.0                | 8,990*           |                   |                  | 45.7                | 7,670*           | 51.8              | 5,930*           | 110              |
| 115              |                     |                  |                   |                  |                     |                  |                   |                  | 35.8                | 8,640*           |                   |                  | 42.3                | 7,340*           |                   |                  | 115              |
| 120              |                     |                  |                   |                  |                     |                  |                   |                  |                     |                  |                   |                  | 38.8                | 7,050*           |                   |                  | 120              |
| 125              |                     |                  |                   |                  |                     |                  |                   |                  |                     |                  |                   |                  | 35.1                | 6,810*           |                   |                  | 125              |
| Reeves           | 2                   |                  | 2                 |                  | 2                   |                  | 1                 |                  | 2                   |                  | 1                 |                  | 2                   |                  | 1                 |                  | Reeves           |
| 90' Boom         |                     |                  |                   |                  |                     |                  |                   |                  |                     |                  |                   |                  |                     |                  |                   |                  |                  |
| Load Radius (ft) | 30 ft Jib           |                  |                   |                  | 40 ft Jib           |                  |                   |                  | 50 ft Jib           |                  |                   |                  | 60 ft Jib           |                  |                   |                  | Load Radius (ft) |
|                  | Offset Angle (deg.) |                  |                   |                  | Offset Angle (deg.) |                  |                   |                  | Offset Angle (deg.) |                  |                   |                  | Offset Angle (deg.) |                  |                   |                  |                  |
|                  | 10                  |                  | 30                |                  | 10                  |                  | 30                |                  | 10                  |                  | 30                |                  | 10                  |                  | 30                |                  |                  |
|                  | Boom Angle (deg.)   | Rated Load (lbs) | Boom Angle (deg.) | Rated Load (lbs) | Boom Angle (deg.)   | Rated Load (lbs) | Boom Angle (deg.) | Rated Load (lbs) | Boom Angle (deg.)   | Rated Load (lbs) | Boom Angle (deg.) | Rated Load (lbs) | Boom Angle (deg.)   | Rated Load (lbs) | Boom Angle (deg.) | Rated Load (lbs) |                  |
| 32               | 79.1                | 24,000*          |                   |                  |                     |                  |                   |                  |                     |                  |                   |                  |                     |                  |                   |                  | 32               |
| 34               | 78.1                | 24,000*          |                   |                  |                     |                  |                   |                  |                     |                  |                   |                  |                     |                  |                   |                  | 34               |
| 36               | 77.1                | 24,000*          |                   |                  | 79.3                | 24,000*          |                   |                  |                     |                  |                   |                  |                     |                  |                   |                  | 36               |
| 38               | 76.2                | 24,000*          |                   |                  | 78.4                | 24,000*          |                   |                  | 80.0                | 20,000*          |                   |                  |                     |                  |                   |                  | 38               |
| 40               | 75.2                | 24,000*          | 79.5              | 20,170*          | 77.5                | 24,000*          |                   |                  | 79.2                | 20,000*          |                   |                  |                     |                  |                   |                  | 40               |
| 45               | 72.7                | 24,000*          | 77.0              | 19,060*          | 75.2                | 24,000*          |                   |                  | 77.1                | 20,000*          |                   |                  | 78.6                | 18,000*          |                   |                  | 45               |
| 50               | 70.2                | 24,000*          | 74.4              | 18,120*          | 72.9                | 23,320*          | 78.2              | 14,810*          | 75.0                | 19,400*          |                   |                  | 76.6                | 17,040*          |                   |                  | 50               |
| 55               | 67.5                | 23,690           | 71.6              | 17,210*          | 70.4                | 21,400*          | 75.6              | 14,020*          | 72.7                | 17,790*          | 78.9              | 11,300*          | 74.5                | 15,580*          |                   |                  | 55               |
| 60               | 64.9                | 21,120           | 68.9              | 16,460*          | 68.1                | 19,880*          | 73.2              | 13,330*          | 70.5                | 16,510*          | 76.7              | 10,730*          | 72.5                | 14,410*          | 79.5              | 9,100*           | 60               |
| 65               | 62.2                | 19,000           | 66.1              | 15,800*          | 65.6                | 18,560*          | 70.7              | 12,760*          | 68.3                | 15,380*          | 74.4              | 10,250*          | 70.5                | 13,400*          | 77.4              | 8,660*           | 65               |
| 70               | 59.4                | 17,190           | 63.3              | 15,210*          | 63.2                | 17,370           | 68.1              | 12,230*          | 66.1                | 14,390*          | 72.0              | 9,780*           | 68.4                | 12,520*          | 75.3              | 8,240*           | 70               |
| 75               | 56.4                | 15,560           | 60.2              | 14,660*          | 60.4                | 15,740           | 65.3              | 11,720*          | 63.6                | 13,490*          | 69.5              | 9,360*           | 66.1                | 11,680*          | 72.9              | 7,870*           | 75               |
| 80               | 53.5                | 14,240           | 57.1              | 14,190*          | 57.8                | 14,410           | 62.5              | 11,300*          | 61.3                | 12,720*          | 67.0              | 8,990*           | 64.0                | 11,000*          | 70.7              | 7,530*           | 80               |
| 85               | 50.4                | 13,090           | 53.9              | 13,330           | 55.1                | 13,240           | 59.7              | 10,930*          | 58.8                | 12,050*          | 64.5              | 8,680*           | 61.8                | 10,400*          | 68.4              | 7,230*           | 85               |
| 90               | 47.1                | 12,100           |                   |                  | 52.3                | 12,230           | 56.7              | 10,580*          | 56.3                | 11,440*          | 61.8              | 8,370*           | 59.5                | 9,850*           | 66.0              | 6,960*           | 90               |
| 95               | 43.4                | 11,150           |                   |                  | 49.1                | 11,280           | 53.4              | 10,270*          | 53.6                | 10,860*          | 58.9              | 8,110*           | 57.1                | 9,320*           | 63.4              | 6,700*           | 95               |
| 100              | 39.7                | 10,360           |                   |                  | 46.0                | 10,490           |                   |                  | 50.9                | 10,380*          | 56.1              | 7,870*           | 54.7                | 8,880*           | 60.9              | 6,480*           | 100              |
| 105              | 35.6                | 9,650            |                   |                  | 42.7                | 9,760            |                   |                  | 48.0                | 9,850            | 53.1              | 7,640*           | 52.2                | 8,480*           | 58.3              | 6,280*           | 105              |
| 110              |                     |                  |                   |                  | 39.1                | 9,120            |                   |                  | 45.0                | 9,210            |                   |                  | 49.6                | 8,110*           | 55.5              | 6,100*           | 110              |
| 115              |                     |                  |                   |                  | 35.0                | 8,500            |                   |                  | 41.7                | 8,570            |                   |                  | 46.7                | 7,760*           | 52.4              | 5,930*           | 115              |
| 120              |                     |                  |                   |                  |                     |                  |                   |                  | 38.2                | 8,040            |                   |                  | 43.8                | 7,450*           |                   |                  | 120              |
| 125              |                     |                  |                   |                  |                     |                  |                   |                  | 34.4                | 7,560            |                   |                  | 40.7                | 7,180*           |                   |                  | 125              |
| 130              |                     |                  |                   |                  |                     |                  |                   |                  |                     |                  |                   |                  | 37.4                | 6,940*           |                   |                  | 130              |
| 135              |                     |                  |                   |                  |                     |                  |                   |                  |                     |                  |                   |                  | 33.8                | 6,720*           |                   |                  | 135              |
| Reeves           | 2                   |                  | 2                 |                  | 2                   |                  | 1                 |                  | 2                   |                  | 1                 |                  | 2                   |                  | 1                 |                  | Reeves           |

Note: Designed and rated to comply with ANSI Code B30.5





## SPECIFICATIONS

## Fixed Jib Lift Capacity

Full Counterweight: 57,600 lbs Carbody Weight: 14,400

| 100' Boom        |                     |                  |                   |                  |                     |                  |                   |                  |                     |                  |                   |                  |                     |                  |                   |                  |                  |
|------------------|---------------------|------------------|-------------------|------------------|---------------------|------------------|-------------------|------------------|---------------------|------------------|-------------------|------------------|---------------------|------------------|-------------------|------------------|------------------|
| Load Radius (ft) | 30 ft Jib           |                  |                   |                  | 40 ft Jib           |                  |                   |                  | 50 ft Jib           |                  |                   |                  | 60 ft Jib           |                  |                   |                  | Load Radius (ft) |
|                  | Offset Angle (deg.) |                  |                   |                  | Offset Angle (deg.) |                  |                   |                  | Offset Angle (deg.) |                  |                   |                  | Offset Angle (deg.) |                  |                   |                  |                  |
|                  | 10                  |                  | 30                |                  | 10                  |                  | 30                |                  | 10                  |                  | 30                |                  | 10                  |                  | 30                |                  |                  |
|                  | Boom Angle (deg.)   | Rated Load (lbs) | Boom Angle (deg.) | Rated Load (lbs) | Boom Angle (deg.)   | Rated Load (lbs) | Boom Angle (deg.) | Rated Load (lbs) | Boom Angle (deg.)   | Rated Load (lbs) | Boom Angle (deg.) | Rated Load (lbs) | Boom Angle (deg.)   | Rated Load (lbs) | Boom Angle (deg.) | Rated Load (lbs) |                  |
| 32               | 79.9                | 24,000*          |                   |                  |                     |                  |                   |                  |                     |                  |                   |                  |                     |                  |                   |                  | 32               |
| 34               | 79.0                | 24,000*          |                   |                  |                     |                  |                   |                  |                     |                  |                   |                  |                     |                  |                   |                  | 34               |
| 36               | 78.1                | 24,000*          |                   |                  | 80.0                | 24,000*          |                   |                  |                     |                  |                   |                  |                     |                  |                   |                  | 36               |
| 38               | 77.2                | 24,000*          |                   |                  | 79.2                | 24,000*          |                   |                  |                     |                  |                   |                  |                     |                  |                   |                  | 38               |
| 40               | 76.4                | 24,000*          |                   |                  | 78.4                | 24,000*          |                   |                  | 79.9                | 20,000*          |                   |                  |                     |                  |                   |                  | 40               |
| 45               | 74.1                | 24,000*          | 78.0              | 19,480*          | 76.3                | 24,000*          |                   |                  | 78.0                | 20,000*          |                   |                  | 79.3                | 18,000*          |                   |                  | 45               |
| 50               | 71.8                | 24,000*          | 75.7              | 18,560*          | 74.2                | 24,000*          |                   | 15,100*          | 76.0                | 20,000*          |                   |                  | 77.5                | 17,680*          |                   |                  | 50               |
| 55               | 69.3                | 23,450           | 73.2              | 17,650*          | 71.9                | 22,480*          | 76.7              | 14,320*          | 73.9                | 18,580*          | 79.7              | 11,500*          | 75.5                | 16,200*          |                   |                  | 55               |
| 60               | 67.0                | 20,870           | 70.7              | 16,930*          | 69.7                | 20,920*          | 74.5              | 13,660*          | 71.9                | 17,260*          | 77.7              | 10,950*          | 73.7                | 15,030*          |                   |                  | 60               |
| 65               | 64.5                | 18,730           | 68.2              | 16,260*          | 67.5                | 18,950           | 72.2              | 13,090*          | 69.9                | 16,110*          | 75.5              | 10,470*          | 71.8                | 13,990*          | 78.3              | 8,810*           | 65               |
| 70               | 62.1                | 16,930           | 65.7              | 15,670*          | 65.3                | 17,150           | 69.9              | 12,560*          | 67.8                | 15,120*          | 73.4              | 10,030*          | 69.9                | 13,090*          | 76.3              | 8,420*           | 70               |
| 75               | 59.4                | 15,290           | 62.9              | 15,100*          | 62.8                | 15,490           | 67.3              | 12,050*          | 65.6                | 14,170*          | 71.1              | 9,610*           | 67.8                | 12,250*          | 74.2              | 8,040*           | 75               |
| 80               | 56.7                | 13,970           | 60.2              | 14,300           | 60.4                | 14,150           | 64.9              | 11,640*          | 63.4                | 13,380*          | 68.8              | 9,230*           | 65.8                | 11,550*          | 72.1              | 7,710*           | 80               |
| 85               | 54.0                | 12,830           | 57.4              | 13,110           | 58.0                | 13,000           | 62.4              | 11,260*          | 61.2                | 12,690*          | 66.5              | 8,920*           | 63.8                | 10,910*          | 70.0              | 7,420*           | 85               |
| 90               | 51.2                | 11,810           | 54.5              | 12,050           | 55.5                | 11,970           | 59.8              | 10,910*          | 59.0                | 12,050*          | 64.2              | 8,610*           | 61.7                | 10,360*          | 67.9              | 7,160*           | 90               |
| 95               | 48.1                | 10,860           | 51.2              | 11,060           | 52.8                | 11,020           | 56.9              | 10,580*          | 56.5                | 11,130           | 61.6              | 8,330*           | 59.5                | 9,810*           | 65.5              | 6,900*           | 95               |
| 100              | 45.0                | 10,070           |                   |                  | 50.1                | 10,200           | 54.0              | 10,310*          | 54.1                | 10,310           | 59.1              | 8,090*           | 57.3                | 9,340*           | 63.2              | 6,670*           | 100              |
| 105              | 41.7                | 9,360            |                   |                  | 47.2                | 9,500            |                   |                  | 51.6                | 9,590            | 56.4              | 7,870*           | 55.1                | 8,920*           | 60.9              | 6,450*           | 105              |
| 110              | 38.1                | 8,730            |                   |                  | 44.3                | 8,860            |                   |                  | 49.0                | 8,950            | 53.7              | 7,690*           | 52.7                | 8,550*           | 58.4              | 6,280*           | 110              |
| 115              | 34.0                | 8,130            |                   |                  | 40.9                | 8,220            |                   |                  | 46.1                | 8,310            |                   |                  | 50.2                | 8,170*           | 55.7              | 6,100*           | 115              |
| 120              |                     |                  |                   |                  | 37.4                | 7,690            |                   |                  | 43.2                | 7,780            |                   |                  | 47.7                | 7,820            | 53.1              | 5,950*           | 120              |
| 125              |                     |                  |                   |                  | 33.7                | 7,230            |                   |                  | 40.2                | 7,290            |                   |                  | 45.1                | 7,340            |                   |                  | 125              |
| 130              |                     |                  |                   |                  |                     |                  |                   |                  | 36.8                | 6,830            |                   |                  | 42.3                | 6,870            |                   |                  | 130              |
| 135              |                     |                  |                   |                  |                     |                  |                   |                  | 33.2                | 6,430            |                   |                  | 39.4                | 6,480            |                   |                  | 135              |
| 140              |                     |                  |                   |                  |                     |                  |                   |                  |                     |                  |                   |                  | 35.9                | 6,060            |                   |                  | 140              |
| 145              |                     |                  |                   |                  |                     |                  |                   |                  |                     |                  |                   |                  | 32.4                | 5,730            |                   |                  | 145              |
| Reeves           | 2                   |                  | 2                 |                  | 2                   |                  | 1                 |                  | 2                   |                  | 1                 |                  | 2                   |                  | 1                 |                  | Reeves           |
| 110' Boom        |                     |                  |                   |                  |                     |                  |                   |                  |                     |                  |                   |                  |                     |                  |                   |                  |                  |
| Load Radius (ft) | 30 ft Jib           |                  |                   |                  | 40 ft Jib           |                  |                   |                  | 50 ft Jib           |                  |                   |                  | 60 ft Jib           |                  |                   |                  | Load Radius (ft) |
|                  | Offset Angle (deg.) |                  |                   |                  | Offset Angle (deg.) |                  |                   |                  | Offset Angle (deg.) |                  |                   |                  | Offset Angle (deg.) |                  |                   |                  |                  |
|                  | 10                  |                  | 30                |                  | 10                  |                  | 30                |                  | 10                  |                  | 30                |                  | 10                  |                  | 30                |                  |                  |
|                  | Boom Angle (deg.)   | Rated Load (lbs) | Boom Angle (deg.) | Rated Load (lbs) | Boom Angle (deg.)   | Rated Load (lbs) | Boom Angle (deg.) | Rated Load (lbs) | Boom Angle (deg.)   | Rated Load (lbs) | Boom Angle (deg.) | Rated Load (lbs) | Boom Angle (deg.)   | Rated Load (lbs) | Boom Angle (deg.) | Rated Load (lbs) |                  |
| 34               | 79.8                | 24,000           |                   |                  |                     |                  |                   |                  |                     |                  |                   |                  |                     |                  |                   |                  | 34               |
| 36               | 79.0                | 24,000           |                   |                  |                     |                  |                   |                  |                     |                  |                   |                  |                     |                  |                   |                  | 36               |
| 38               | 78.2                | 24,000           |                   |                  | 79.9                | 24,000*          |                   |                  |                     |                  |                   |                  |                     |                  |                   |                  | 38               |
| 40               | 77.3                | 24,000           |                   |                  | 79.2                | 24,000*          |                   |                  |                     |                  |                   |                  |                     |                  |                   |                  | 40               |
| 45               | 75.3                | 24,000           | 79.0              | 19,860*          | 77.2                | 24,000*          |                   |                  | 78.8                | 20,000*          |                   |                  | 80.0                | 18,000*          |                   |                  | 45               |
| 50               | 73.2                | 24,000           | 76.8              | 18,930*          | 75.3                | 24,000*          | 79.9              | 15,360*          | 76.9                | 20,000*          |                   |                  | 78.3                | 18,000*          |                   |                  | 50               |
| 55               | 70.9                | 23,320           | 74.5              | 18,070*          | 73.2                | 23,500*          | 77.7              | 14,610*          | 75.0                | 19,330*          |                   |                  | 76.4                | 16,820*          |                   |                  | 55               |
| 60               | 68.7                | 20,740           | 72.2              | 17,350*          | 71.2                | 20,960           | 75.6              | 13,970*          | 73.1                | 17,980*          | 78.5              | 11,150*          | 74.7                | 15,600*          |                   |                  | 60               |
| 65               | 66.5                | 18,580           | 70.0              | 16,680*          | 69.1                | 18,800           | 73.5              | 13,400*          | 71.2                | 16,820*          | 76.5              | 10,670*          | 72.9                | 14,570*          | 79.1              | 8,970*           | 65               |
| 70               | 64.3                | 16,770           | 67.7              | 16,090*          | 67.1                | 16,970           | 71.4              | 12,870*          | 69.3                | 15,800*          | 74.6              | 10,250*          | 71.1                | 13,640*          | 77.2              | 8,570*           | 70               |
| 75               | 61.8                | 15,140           | 65.1              | 15,520*          | 64.8                | 15,340           | 69.1              | 12,380*          | 67.2                | 14,830*          | 72.4              | 9,830*           | 69.2                | 12,780*          | 75.2              | 8,200*           | 75               |
| 80               | 59.4                | 13,820           | 62.7              | 14,170           | 62.7                | 13,990           | 66.9              | 11,940*          | 65.2                | 14,020*          | 70.4              | 9,470*           | 67.3                | 12,050*          | 73.3              | 7,890*           | 80               |
| 85               | 57.0                | 12,670           | 60.2              | 12,980           | 60.5                | 12,830           | 64.6              | 11,570*          | 63.2                | 12,960           | 68.3              | 9,140*           | 65.5                | 11,410*          | 71.4              | 7,580*           | 85               |
| 90               | 54.5                | 11,660           | 57.6              | 11,920           | 58.2                | 11,810           | 62.2              | 11,220*          | 61.2                | 11,920           | 66.1              | 8,840*           | 63.6                | 10,840*          | 69.4              | 7,310*           | 90               |
| 95               | 51.8                | 10,710           | 54.8              | 10,930           | 55.7                | 10,840           | 59.7              | 10,890*          | 58.9                | 10,950           | 63.8              | 8,550*           | 61.5                | 10,270*          | 67.2              | 7,050*           | 95               |
| 100              | 49.1                | 9,920            | 52.0              | 10,110           | 53.3                | 10,050           | 57.1              | 10,470           | 56.7                | 10,160           | 61.5              | 8,310*           | 59.5                | 9,780*           | 65.2              | 6,830*           | 100              |
| 105              | 46.3                | 9,210            |                   |                  | 50.8                | 9,320            | 54.5              | 9,700            | 54.5                | 9,430            | 59.2              | 8,090*           | 57.5                | 9,360*           | 63.0              | 6,630*           | 105              |
| 110              | 43.3                | 8,570            |                   |                  | 48.2                | 8,680            | 51.8              | 9,010            | 52.2                | 8,770            | 56.7              | 7,890*           | 55.4                | 8,840            | 60.9              | 6,430*           | 110              |
| 115              | 39.9                | 7,950            |                   |                  | 45.4                | 8,040            |                   |                  | 49.7                | 8,130            | 54.0              | 7,690*           | 53.1                | 8,200            | 58.4              | 6,260*           | 115              |
| 120              | 36.5                | 7,420            |                   |                  | 42.5                | 7,510            |                   |                  | 47.2                | 7,600            |                   |                  | 50.9                | 7,640            | 56.1              | 6,100*           | 120              |
| 125              | 32.7                | 6,960            |                   |                  | 39.4                | 7,050            |                   |                  | 44.5                | 7,120            |                   |                  | 48.6                | 7,160            | 53.6              | 5,970*           | 125              |
| 130              |                     |                  |                   |                  | 36.1                | 6,610            |                   |                  | 41.8                | 6,650            |                   |                  | 46.2                | 6,700            |                   |                  | 130              |
| 135              |                     |                  |                   |                  | 32.5                | 6,190            |                   |                  | 38.8                | 6,260            |                   |                  | 43.6                | 6,300            |                   |                  | 135              |
| 140              |                     |                  |                   |                  |                     |                  |                   |                  | 35.4                | 5,860            |                   |                  | 40.8                | 5,880            |                   |                  | 140              |
| 145              |                     |                  |                   |                  |                     |                  |                   |                  |                     |                  |                   |                  | 37.9                | 5,530            |                   |                  | 145              |
| 150              |                     |                  |                   |                  |                     |                  |                   |                  |                     |                  |                   |                  | 34.8                | 5,220            |                   |                  | 150              |
| Reeves           | 2                   |                  | 2                 |                  | 2                   |                  | 1                 |                  | 2                   |                  | 1                 |                  | 2                   |                  | 1                 |                  | Reeves           |

Note: Designed and rated to comply with ANSI Code B30.5



# SPECIFICATIONS

Fixed Jib Lift Capacity

Full Counterweight: 57,600 lbs      Carbody Weight: 14,400

| 120' Boom        |                     |                  |                   |                  |                     |                  |                   |                  |                     |                  |                   |                  |                     |                  |                   |                  |                  |
|------------------|---------------------|------------------|-------------------|------------------|---------------------|------------------|-------------------|------------------|---------------------|------------------|-------------------|------------------|---------------------|------------------|-------------------|------------------|------------------|
| Load Radius (ft) | 30 ft Jib           |                  |                   |                  | 40 ft Jib           |                  |                   |                  | 50 ft Jib           |                  |                   |                  | 60 ft Jib           |                  |                   |                  | Load Radius (ft) |
|                  | Offset Angle (deg.) |                  |                   |                  | Offset Angle (deg.) |                  |                   |                  | Offset Angle (deg.) |                  |                   |                  | Offset Angle (deg.) |                  |                   |                  |                  |
|                  | 10                  |                  | 30                |                  | 10                  |                  | 30                |                  | 10                  |                  | 30                |                  | 10                  |                  | 30                |                  |                  |
|                  | Boom Angle (deg.)   | Rated Load (lbs) | Boom Angle (deg.) | Rated Load (lbs) | Boom Angle (deg.)   | Rated Load (lbs) | Boom Angle (deg.) | Rated Load (lbs) | Boom Angle (deg.)   | Rated Load (lbs) | Boom Angle (deg.) | Rated Load (lbs) | Boom Angle (deg.)   | Rated Load (lbs) | Boom Angle (deg.) | Rated Load (lbs) |                  |
| 36               | 79.7                | 24,000*          |                   |                  |                     |                  |                   |                  |                     |                  |                   |                  |                     |                  |                   |                  | 36               |
| 38               | 79.0                | 24,000*          |                   |                  |                     |                  |                   |                  |                     |                  |                   |                  |                     |                  |                   |                  | 38               |
| 40               | 78.2                | 24,000*          |                   |                  |                     | 24,000*          |                   |                  |                     |                  |                   |                  |                     |                  |                   |                  | 40               |
| 45               | 76.3                | 24,000*          | 79.7              | 20,190*          | 78.1                | 24,000*          |                   |                  | 79.5                | 20,000*          |                   |                  |                     |                  |                   |                  | 45               |
| 50               | 74.3                | 24,000*          | 77.7              | 19,290*          | 76.2                | 24,000*          |                   |                  | 77.7                | 20,000*          |                   |                  | 78.9                | 18,000*          |                   |                  | 50               |
| 55               | 72.2                | 23,100           | 75.6              | 18,450*          | 74.3                | 23,360           | 78.5              | 14,880*          | 75.9                | 20,000*          |                   |                  | 77.2                | 17,390*          |                   |                  | 55               |
| 60               | 70.2                | 20,520           | 73.5              | 17,720*          | 72.4                | 20,760           | 76.6              | 14,240*          | 74.2                | 18,690*          | 79.2              | 11,330*          | 75.6                | 16,180*          |                   |                  | 60               |
| 65               | 68.2                | 18,360           | 71.4              | 17,080*          | 70.5                | 18,580           | 74.7              | 13,690*          | 72.4                | 17,500*          | 77.4              | 10,860*          | 73.9                | 15,120*          | 79.7              | 9,080*           | 65               |
| 70               | 66.1                | 16,550           | 69.3              | 16,490*          | 68.6                | 16,770           | 72.7              | 13,160*          | 70.6                | 16,440*          | 75.6              | 10,420*          | 72.2                | 14,170*          | 78.0              | 8,700*           | 70               |
| 75               | 63.9                | 14,920           | 67.0              | 15,340           | 66.5                | 15,100           | 70.6              | 12,670*          | 68.7                | 15,250           | 73.6              | 10,030*          | 70.4                | 13,290*          | 76.1              | 8,350*           | 75               |
| 80               | 61.7                | 13,600           | 64.8              | 13,970           | 64.5                | 13,770           | 68.5              | 12,250*          | 66.8                | 13,910           | 71.7              | 9,670*           | 68.7                | 12,560*          | 74.4              | 8,040*           | 80               |
| 85               | 59.5                | 12,430           | 62.6              | 12,780           | 62.5                | 12,610           | 66.4              | 11,860*          | 65.0                | 12,740           | 69.7              | 9,340*           | 67.0                | 11,900*          | 72.6              | 7,730*           | 85               |
| 90               | 57.3                | 11,410           | 60.2              | 11,720           | 60.5                | 11,570           | 64.3              | 11,500*          | 63.1                | 11,700           | 67.8              | 9,060*           | 65.2                | 11,300*          | 70.7              | 7,470*           | 90               |
| 95               | 54.8                | 10,470           | 57.7              | 10,730           | 58.2                | 10,620           | 62.0              | 11,130           | 61.0                | 10,730           | 65.6              | 8,770*           | 63.3                | 10,730*          | 68.7              | 7,230*           | 95               |
| 100              | 52.4                | 9,650            | 55.2              | 9,890            | 56.0                | 9,810            | 59.7              | 10,290           | 59.0                | 9,920            | 63.6              | 8,500*           | 61.5                | 9,980            | 66.8              | 7,010*           | 100              |
| 105              | 49.9                | 8,950            | 52.6              | 9,140            | 53.8                | 9,080            | 57.4              | 9,520            | 57.0                | 9,190            | 61.4              | 8,280*           | 59.6                | 9,250            | 64.9              | 6,790*           | 105              |
| 110              | 47.3                | 8,310            |                   |                  | 51.5                | 8,440            | 55.0              | 8,840            | 54.9                | 8,530            | 59.3              | 8,060*           | 57.7                | 8,590            | 62.9              | 6,610*           | 110              |
| 115              | 44.5                | 7,690            |                   |                  | 49.0                | 7,800            | 52.3              | 8,150            | 52.6                | 7,890            | 56.8              | 7,870*           | 55.6                | 7,950            | 60.7              | 6,410*           | 115              |
| 120              | 41.6                | 7,160            |                   |                  | 46.5                | 7,270            |                   |                  | 50.4                | 7,360            | 54.5              | 7,690*           | 53.6                | 7,400            | 58.6              | 6,260*           | 120              |
| 125              | 38.5                | 6,670            |                   |                  | 43.8                | 6,790            |                   |                  | 48.1                | 6,850            | 52.1              | 7,250            | 51.5                | 6,920            | 56.4              | 6,100*           | 125              |
| 130              | 35.3                | 6,230            |                   |                  | 41.1                | 6,320            |                   |                  | 45.7                | 6,410            |                   |                  | 49.3                | 6,450            | 54.1              | 5,970*           | 130              |
| 135              | 31.7                | 5,840            |                   |                  | 38.1                | 5,930            |                   |                  | 43.1                | 5,990            |                   |                  | 47.1                | 6,040            | 51.7              | 5,860*           | 135              |
| 140              |                     |                  |                   |                  | 34.7                | 5,530            |                   |                  | 40.3                | 5,590            |                   |                  | 44.6                | 5,640            |                   |                  | 140              |
| 145              |                     |                  |                   |                  |                     |                  |                   |                  | 37.4                | 5,240            |                   |                  | 42.2                | 5,290            |                   |                  | 145              |
| 150              |                     |                  |                   |                  |                     |                  |                   |                  | 34.3                | 4,910            |                   |                  | 39.6                | 4,960            |                   |                  | 150              |
| 155              |                     |                  |                   |                  |                     |                  |                   |                  |                     |                  |                   |                  | 36.8                | 4,650            |                   |                  | 155              |
| 160              |                     |                  |                   |                  |                     |                  |                   |                  |                     |                  |                   |                  | 33.6                | 4,340            |                   |                  | 160              |
| Reeves           | 2                   |                  | 2                 |                  | 2                   |                  | 1                 |                  | 2                   |                  | 1                 |                  | 2                   |                  | 1                 |                  | Reeves           |
| 130' Boom        |                     |                  |                   |                  |                     |                  |                   |                  |                     |                  |                   |                  |                     |                  |                   |                  |                  |
| Load Radius (ft) | 30 ft Jib           |                  |                   |                  | 40 ft Jib           |                  |                   |                  | 50 ft Jib           |                  |                   |                  | 60 ft Jib           |                  |                   |                  | Load Radius (ft) |
|                  | Offset Angle (deg.) |                  |                   |                  | Offset Angle (deg.) |                  |                   |                  | Offset Angle (deg.) |                  |                   |                  | Offset Angle (deg.) |                  |                   |                  |                  |
|                  | 10                  |                  | 30                |                  | 10                  |                  | 30                |                  | 10                  |                  | 30                |                  | 10                  |                  | 30                |                  |                  |
|                  | Boom Angle (deg.)   | Rated Load (lbs) | Boom Angle (deg.) | Rated Load (lbs) | Boom Angle (deg.)   | Rated Load (lbs) | Boom Angle (deg.) | Rated Load (lbs) | Boom Angle (deg.)   | Rated Load (lbs) | Boom Angle (deg.) | Rated Load (lbs) | Boom Angle (deg.)   | Rated Load (lbs) | Boom Angle (deg.) | Rated Load (lbs) |                  |
| 38               | 79.7                | 24,000*          |                   |                  |                     |                  |                   |                  |                     |                  |                   |                  |                     |                  |                   |                  | 38               |
| 40               | 79.0                | 24,000*          |                   |                  |                     |                  |                   |                  |                     |                  |                   |                  |                     |                  |                   |                  | 40               |
| 45               | 77.1                | 24,000*          |                   |                  | 78.8                | 24,000*          |                   |                  | 80.0                | 20,000*          |                   |                  |                     |                  |                   |                  | 45               |
| 50               | 75.3                | 24,000*          | 78.5              | 19,620*          | 77.1                | 24,000*          |                   |                  | 78.4                | 20,000*          |                   |                  | 79.5                | 18,000*          |                   |                  | 50               |
| 55               | 73.4                | 22,880           | 76.5              | 18,780*          | 75.2                | 23,170           | 79.3              | 15,100*          | 76.7                | 20,000*          |                   |                  | 77.9                | 17,920*          |                   |                  | 55               |
| 60               | 71.5                | 20,300           | 74.6              | 18,070*          | 73.5                | 20,540           | 77.5              | 14,500*          | 75.1                | 19,330*          | 79.9              | 11,480*          | 76.3                | 16,710*          |                   |                  | 60               |
| 65               | 69.6                | 18,140           | 72.7              | 17,430*          | 71.7                | 18,380           | 75.7              | 13,930*          | 73.4                | 18,140*          | 78.2              | 11,020*          | 74.8                | 15,630*          |                   |                  | 65               |
| 70               | 67.7                | 16,330           | 70.7              | 16,860           | 69.9                | 16,550           | 73.8              | 13,420*          | 71.7                | 16,710           | 76.5              | 10,620*          | 73.2                | 14,680*          | 78.7              | 8,840*           | 70               |
| 75               | 65.6                | 14,680           | 68.6              | 15,140           | 68.0                | 14,880           | 71.8              | 12,940*          | 69.9                | 15,030           | 74.6              | 10,200*          | 71.5                | 13,800*          | 76.9              | 8,480*           | 75               |
| 80               | 63.6                | 13,350           | 66.6              | 13,770           | 66.2                | 13,550           | 69.9              | 12,520*          | 68.2                | 13,690           | 72.8              | 9,850*           | 69.9                | 13,050*          | 75.3              | 8,170*           | 80               |
| 85               | 61.6                | 12,210           | 64.5              | 12,580           | 64.3                | 12,380           | 68.0              | 12,140*          | 66.5                | 12,520           | 71.0              | 9,540*           | 68.3                | 12,360*          | 73.6              | 7,890*           | 85               |
| 90               | 59.6                | 11,170           | 62.4              | 11,530           | 62.4                | 11,350           | 66.1              | 11,770*          | 64.7                | 11,480           | 69.2              | 9,230*           | 66.6                | 11,570           | 71.9              | 7,620*           | 90               |
| 95               | 57.3                | 10,220           | 60.1              | 10,510           | 60.3                | 10,380           | 63.9              | 10,950           | 62.8                | 10,510           | 67.2              | 8,950*           | 64.8                | 10,580           | 70.0              | 7,360*           | 95               |
| 100              | 55.2                | 9,430            | 57.9              | 9,700            | 58.3                | 9,560            | 61.9              | 10,090           | 61.0                | 9,700            | 65.3              | 8,700*           | 63.1                | 9,760            | 68.3              | 7,140*           | 100              |
| 105              | 52.9                | 8,700            | 55.6              | 8,950            | 56.3                | 8,860            | 59.8              | 9,340            | 59.1                | 8,950            | 63.4              | 8,480*           | 61.4                | 9,030            | 66.5              | 6,940*           | 105              |
| 110              | 50.6                | 8,060            | 53.2              | 8,260            | 54.2                | 8,200            | 57.6              | 8,640            | 57.2                | 8,310            | 61.4              | 8,260*           | 59.6                | 8,370            | 64.6              | 6,740*           | 110              |
| 115              | 48.1                | 7,450            |                   |                  | 51.9                | 7,560            | 55.2              | 7,980            | 55.1                | 7,670            | 59.2              | 8,040*           | 57.7                | 7,730            | 62.6              | 6,560*           | 115              |
| 120              | 45.6                | 6,920            |                   |                  | 49.7                | 7,030            | 52.9              | 7,400            | 53.1                | 7,120            | 57.1              | 7,600            | 55.9                | 7,180            | 60.7              | 6,390*           | 120              |
| 125              | 43.0                | 6,430            |                   |                  | 47.4                | 6,540            |                   |                  | 51.0                | 6,630            | 54.9              | 7,070            | 54.0                | 6,670            | 58.7              | 6,230*           | 125              |
| 130              | 40.2                | 5,990            |                   |                  | 45.0                | 6,080            |                   |                  | 48.8                | 6,170            | 52.6              | 6,590            | 52.0                | 6,230            | 56.6              | 6,100*           | 130              |
| 135              | 37.3                | 5,570            |                   |                  | 42.5                | 5,680            |                   |                  | 46.6                | 5,750            |                   |                  | 50.0                | 5,820            | 54.5              | 5,970*           | 135              |
| 140              | 33.9                | 5,200            |                   |                  | 39.6                | 5,260            |                   |                  | 44.1                | 5,350            |                   |                  | 47.8                | 5,400            | 52.2              | 5,840            | 140              |
| 145              |                     |                  |                   |                  | 36.8                | 4,930            |                   |                  | 41.7                | 5,000            |                   |                  | 45.6                | 5,040            |                   |                  | 145              |
| 150              |                     |                  |                   |                  | 33.7                | 4,600            |                   |                  | 39.1                | 4,670            |                   |                  | 43.3                | 4,710            |                   |                  | 150              |
| 155              |                     |                  |                   |                  |                     |                  |                   |                  | 36.3                | 4,360            |                   |                  | 41.0                | 4,400            |                   |                  | 155              |
| 160              |                     |                  |                   |                  |                     |                  |                   |                  | 33.1                | 4,030            |                   |                  | 38.3                | 4,070            |                   |                  | 160              |
| 165              |                     |                  |                   |                  |                     |                  |                   |                  |                     |                  |                   |                  | 35.6                | 3,760            |                   |                  | 165              |
| 170              |                     |                  |                   |                  |                     |                  |                   |                  |                     |                  |                   |                  | 32.7                | 3,480            |                   |                  | 170              |
| Reeves           | 2                   |                  | 2                 |                  | 2                   |                  | 1                 |                  | 2                   |                  | 1                 |                  | 2                   |                  | 1                 |                  | Reeves           |

Note: Designed and rated to comply with ANSI Code B30.5

# SPECIFICATIONS

## Fixed Jib Lift Capacity

Full Counterweight: 57,600 lbs    Carbody Weight: 14,400

| 140' Boom        |                     |                  |                   |                  |                     |                  |                   |                  |                     |                  |                   |                  |                     |                  |                   |                  |                  |
|------------------|---------------------|------------------|-------------------|------------------|---------------------|------------------|-------------------|------------------|---------------------|------------------|-------------------|------------------|---------------------|------------------|-------------------|------------------|------------------|
| Load Radius (ft) | 30 ft Jib           |                  |                   |                  | 40 ft Jib           |                  |                   |                  | 50 ft Jib           |                  |                   |                  | 60 ft Jib           |                  |                   |                  | Load Radius (ft) |
|                  | Offset Angle (deg.) |                  |                   |                  | Offset Angle (deg.) |                  |                   |                  | Offset Angle (deg.) |                  |                   |                  | Offset Angle (deg.) |                  |                   |                  |                  |
|                  | 10                  |                  | 30                |                  | 10                  |                  | 30                |                  | 10                  |                  | 30                |                  | 10                  |                  | 30                |                  |                  |
|                  | Boom Angle (deg.)   | Rated Load (lbs) | Boom Angle (deg.) | Rated Load (lbs) | Boom Angle (deg.)   | Rated Load (lbs) | Boom Angle (deg.) | Rated Load (lbs) | Boom Angle (deg.)   | Rated Load (lbs) | Boom Angle (deg.) | Rated Load (lbs) | Boom Angle (deg.)   | Rated Load (lbs) | Boom Angle (deg.) | Rated Load (lbs) |                  |
| 40               | 79.6                | 24,000*          |                   |                  |                     |                  |                   |                  |                     |                  |                   |                  |                     |                  |                   |                  | 40               |
| 45               | 77.9                | 24,000*          |                   |                  | 79.4                | 24,000*          |                   |                  |                     |                  |                   |                  |                     |                  |                   |                  | 45               |
| 50               | 76.2                | 24,000*          | 79.2              | 19,900*          | 77.8                | 24,000*          |                   |                  | 79.1                | 20,000*          |                   |                  |                     |                  |                   |                  | 50               |
| 55               | 74.4                | 22,680           | 77.4              | 19,090*          | 76.1                | 22,970           | 79.9              | 15,320*          | 77.4                | 20,000*          |                   |                  | 78.5                | 18,000*          |                   |                  | 55               |
| 60               | 72.6                | 20,080           | 75.6              | 18,400*          | 74.4                | 20,340           | 78.2              | 14,720*          | 75.9                | 19,970*          |                   |                  | 77.0                | 17,210*          |                   |                  | 60               |
| 65               | 70.9                | 17,940           | 73.8              | 17,760*          | 72.8                | 18,180           | 76.5              | 14,170*          | 74.3                | 18,360           | 78.8              | 11,170*          | 75.6                | 16,130*          |                   |                  | 65               |
| 70               | 69.1                | 16,110           | 72.0              | 16,680           | 71.1                | 16,330           | 74.8              | 13,690*          | 72.8                | 16,510           | 77.2              | 10,780*          | 74.1                | 15,160*          | 79.3              | 8,950*           | 70               |
| 75               | 67.2                | 14,460           | 70.0              | 14,960           | 69.3                | 14,680           | 72.9              | 13,180*          | 71.1                | 14,830           | 75.5              | 10,380*          | 72.5                | 14,260*          | 77.7              | 8,590*           | 75               |
| 80               | 65.3                | 13,130           | 68.1              | 13,600           | 67.6                | 13,330           | 71.2              | 12,760*          | 69.4                | 13,490           | 73.8              | 10,030*          | 71.0                | 13,490*          | 76.1              | 8,310*           | 80               |
| 85               | 63.5                | 11,970           | 66.2              | 12,380           | 65.9                | 12,160           | 69.4              | 12,380*          | 67.8                | 12,300           | 72.1              | 9,720*           | 69.4                | 12,410           | 74.5              | 8,020*           | 85               |
| 90               | 61.6                | 10,950           | 64.3              | 11,330           | 64.1                | 11,130           | 67.6              | 11,810           | 66.2                | 11,260           | 70.4              | 9,430*           | 67.9                | 11,350           | 72.9              | 7,760*           | 90               |
| 95               | 59.5                | 9,980            | 62.2              | 10,310           | 62.2                | 10,160           | 65.6              | 10,780           | 64.4                | 10,290           | 68.6              | 9,120*           | 66.2                | 10,380           | 71.2              | 7,510*           | 95               |
| 100              | 57.5                | 9,190            | 60.1              | 9,500            | 60.3                | 9,340            | 63.7              | 9,920            | 62.7                | 9,470            | 66.8              | 8,880*           | 64.6                | 9,540            | 69.5              | 7,270*           | 100              |
| 105              | 55.5                | 8,460            | 58.1              | 8,750            | 58.5                | 8,610            | 61.8              | 9,140            | 60.9                | 8,730            | 65.0              | 8,660*           | 63.0                | 8,810            | 67.8              | 7,070*           | 105              |
| 110              | 53.4                | 7,820            | 55.9              | 8,060            | 56.6                | 7,950            | 59.8              | 8,460            | 59.2                | 8,060            | 63.2              | 8,440*           | 61.4                | 8,150            | 66.1              | 6,870*           | 110              |
| 115              | 51.1                | 7,180            | 53.5              | 7,400            | 54.5                | 7,340            | 57.6              | 7,780            | 57.2                | 7,420            | 61.2              | 8,000            | 59.6                | 7,490            | 64.3              | 6,700*           | 115              |
| 120              | 48.9                | 6,650            | 51.3              | 6,850            | 52.5                | 6,790            | 55.5              | 7,200            | 55.4                | 6,900            | 59.3              | 7,420            | 57.9                | 6,960            | 62.5              | 6,520*           | 120              |
| 125              | 46.6                | 6,170            |                   |                  | 50.4                | 6,300            | 53.4              | 6,670            | 53.5                | 6,390            | 57.3              | 6,900            | 56.1                | 6,450            | 60.7              | 6,370*           | 125              |
| 130              | 44.2                | 5,730            |                   |                  | 48.2                | 5,840            |                   |                  | 51.6                | 5,930            | 55.3              | 6,390            | 54.3                | 5,990            | 58.8              | 6,230*           | 130              |
| 135              | 41.7                | 5,330            |                   |                  | 46.0                | 5,420            |                   |                  | 49.5                | 5,510            | 53.1              | 5,950            | 52.5                | 5,570            | 56.9              | 6,100*           | 135              |
| 140              | 38.8                | 4,910            |                   |                  | 43.5                | 5,020            |                   |                  | 47.3                | 5,090            |                   |                  | 50.5                | 5,150            | 54.7              | 5,640            | 140              |
| 145              | 36.0                | 4,560            |                   |                  | 41.1                | 4,670            |                   |                  | 45.1                | 4,730            |                   |                  | 48.5                | 4,800            | 52.7              | 5,240            | 145              |
| 150              | 32.9                | 4,210            |                   |                  | 38.5                | 4,320            |                   |                  | 42.9                | 4,400            |                   |                  | 46.5                | 4,470            |                   |                  | 150              |
| 155              |                     |                  |                   |                  | 35.7                | 3,940            |                   |                  | 40.5                | 4,030            |                   |                  | 44.4                | 4,100            |                   |                  | 155              |
| 160              |                     |                  |                   |                  | 32.5                | 3,610            |                   |                  | 37.8                | 3,680            |                   |                  | 42.0                | 3,720            |                   |                  | 160              |
| 165              |                     |                  |                   |                  |                     |                  |                   |                  | 35.1                | 3,370            |                   |                  | 39.7                | 3,410            |                   |                  | 165              |
| 170              |                     |                  |                   |                  |                     |                  |                   |                  | 32.2                | 3,080            |                   |                  | 37.3                | 3,130            |                   |                  | 170              |
| 175              |                     |                  |                   |                  |                     |                  |                   |                  |                     |                  |                   |                  | 34.6                | 2,840            |                   |                  | 175              |
| Reeves           | 2                   |                  | 2                 |                  | 2                   |                  | 1                 |                  | 2                   |                  | 1                 |                  | 2                   |                  | 1                 |                  | Reeves           |
| 150' Boom        |                     |                  |                   |                  |                     |                  |                   |                  |                     |                  |                   |                  |                     |                  |                   |                  |                  |
| Load Radius (ft) | 30 ft Jib           |                  |                   |                  | 40 ft Jib           |                  |                   |                  | 50 ft Jib           |                  |                   |                  | 60 ft Jib           |                  |                   |                  | Load Radius (ft) |
|                  | Offset Angle (deg.) |                  |                   |                  | Offset Angle (deg.) |                  |                   |                  | Offset Angle (deg.) |                  |                   |                  | Offset Angle (deg.) |                  |                   |                  |                  |
|                  | 10                  |                  | 30                |                  | 10                  |                  | 30                |                  | 10                  |                  | 30                |                  | 10                  |                  | 30                |                  |                  |
|                  | Boom Angle (deg.)   | Rated Load (lbs) | Boom Angle (deg.) | Rated Load (lbs) | Boom Angle (deg.)   | Rated Load (lbs) | Boom Angle (deg.) | Rated Load (lbs) | Boom Angle (deg.)   | Rated Load (lbs) | Boom Angle (deg.) | Rated Load (lbs) | Boom Angle (deg.)   | Rated Load (lbs) | Boom Angle (deg.) | Rated Load (lbs) |                  |
| 45               | 78.6                | 24,000*          |                   |                  | 80.0                | 24,000*          |                   |                  |                     |                  |                   |                  |                     |                  |                   |                  | 45               |
| 50               | 77.0                | 24,000*          | 79.9              | 20,170*          | 78.5                | 24,000*          |                   |                  | 79.6                | 20,000*          |                   |                  |                     |                  |                   |                  | 50               |
| 55               | 75.3                | 22,530           | 78.1              | 19,370*          | 76.8                | 22,810           |                   |                  | 78.1                | 20,000*          |                   |                  | 79.1                | 18,000*          |                   |                  | 55               |
| 60               | 73.6                | 19,920           | 76.4              | 18,690*          | 75.3                | 20,190           | 78.9              | 14,920*          | 76.6                | 20,000*          |                   |                  | 77.7                | 17,700*          |                   |                  | 60               |
| 65               | 72.0                | 17,790           | 74.8              | 18,070*          | 73.7                | 18,030           | 77.3              | 14,390*          | 75.1                | 18,200           | 79.4              | 11,330*          | 76.3                | 16,600*          |                   |                  | 65               |
| 70               | 70.3                | 15,960           | 73.1              | 16,550           | 72.1                | 16,180           | 75.7              | 13,910*          | 73.7                | 16,350           | 77.9              | 10,930*          | 74.9                | 15,650*          | 79.9              | 9,060*           | 70               |
| 75               | 68.5                | 14,300           | 71.2              | 14,830           | 70.5                | 14,520           | 73.9              | 13,420*          | 72.1                | 14,680           | 76.3              | 10,530*          | 73.4                | 14,720*          | 78.3              | 8,700*           | 75               |
| 80               | 66.8                | 12,980           | 69.5              | 13,470           | 68.8                | 13,180           | 72.3              | 13,000*          | 70.5                | 13,330           | 74.7              | 10,200*          | 71.9                | 13,420           | 76.8              | 8,420*           | 80               |
| 85               | 65.1                | 11,810           | 67.7              | 12,250           | 67.2                | 12,010           | 70.6              | 12,630*          | 69.0                | 12,140           | 73.1              | 9,870*           | 70.5                | 12,230           | 75.3              | 8,130*           | 85               |
| 90               | 63.3                | 10,800           | 65.9              | 11,190           | 65.6                | 10,970           | 68.9              | 11,680           | 67.5                | 11,110           | 71.5              | 9,590*           | 69.0                | 11,190           | 73.8              | 7,890*           | 90               |
| 95               | 61.4                | 9,830            | 63.9              | 10,180           | 63.8                | 10,000           | 67.1              | 10,670           | 65.8                | 10,110           | 69.8              | 9,300*           | 67.4                | 10,200           | 72.2              | 7,620*           | 95               |
| 100              | 59.6                | 9,010            | 62.1              | 9,340            | 62.1                | 9,190            | 65.3              | 9,810            | 64.2                | 9,300            | 68.2              | 9,060*           | 65.9                | 9,390            | 70.6              | 7,400*           | 100              |
| 105              | 57.7                | 8,310            | 60.2              | 8,590            | 60.4                | 8,460            | 63.5              | 9,030            | 62.6                | 8,570            | 66.5              | 8,810*           | 64.4                | 8,640            | 69.1              | 7,200*           | 105              |
| 110              | 55.8                | 7,640            | 58.2              | 7,910            | 58.6                | 7,800            | 61.7              | 8,330            | 60.9                | 7,910            | 64.8              | 8,570            | 62.9                | 7,980            | 67.5              | 7,010*           | 110              |
| 115              | 53.7                | 7,030            | 56.1              | 7,270            | 56.7                | 7,160            | 59.7              | 7,670            | 59.1                | 7,270            | 62.9              | 7,890            | 61.2                | 7,340            | 65.7              | 6,830*           | 115              |
| 120              | 51.7                | 6,500            | 54.0              | 6,700            | 54.8                | 6,610            | 57.8              | 7,090            | 57.4                | 6,720            | 61.2              | 7,290            | 59.6                | 6,790            | 64.1              | 6,650*           | 120              |
| 125              | 49.6                | 5,990            | 51.8              | 6,190            | 52.9                | 6,120            | 55.8              | 6,560            | 55.7                | 6,210            | 59.3              | 6,760            | 58.0                | 6,280            | 62.4              | 6,500*           | 125              |
| 130              | 47.5                | 5,550            |                   |                  | 51.0                | 5,660            | 53.8              | 6,080            | 53.9                | 5,750            | 57.5              | 6,280            | 56.3                | 5,820            | 60.7              | 6,370*           | 130              |
| 135              | 45.3                | 5,150            |                   |                  | 49.0                | 5,260            |                   |                  | 52.0                | 5,330            | 55.6              | 5,820            | 54.6                | 5,400            | 58.9              | 5,970            | 135              |
| 140              | 42.8                | 4,730            |                   |                  | 46.7                | 4,850            |                   |                  | 50.0                | 4,930            | 53.4              | 5,350            | 52.8                | 4,980            | 57.0              | 5,530            | 140              |
| 145              | 40.3                | 4,320            |                   |                  | 44.6                | 4,450            |                   |                  | 48.1                | 4,560            |                   |                  | 51.0                | 4,620            | 55.1              | 5,130            | 145              |
| 150              | 37.8                | 3,940            |                   |                  | 42.3                | 4,050            |                   |                  | 46.1                | 4,160            |                   |                  | 49.2                | 4,230            | 53.1              | 4,760            | 150              |
| 155              | 35.0                | 3,590            |                   |                  | 39.9                | 3,700            |                   |                  | 43.9                | 3,790            |                   |                  | 47.3                | 3,850            |                   |                  | 155              |
| 160              | 31.8                | 3,260            |                   |                  | 37.3                | 3,350            |                   |                  | 41.6                | 3,430            |                   |                  | 45.2                | 3,480            |                   |                  | 160              |
| 165              |                     |                  |                   |                  | 34.6                | 3,040            |                   |                  | 39.3                | 3,100            |                   |                  | 43.1                | 3,170            |                   |                  | 165              |
| 170              |                     |                  |                   |                  |                     |                  |                   |                  | 36.8                | 2,820            |                   |                  | 41.0                | 2,860            |                   |                  | 170              |
| 175              |                     |                  |                   |                  |                     |                  |                   |                  | 34.2                | 2,550            |                   |                  | 38.7                | 2,600            |                   |                  | 175              |
| Reeves           | 2                   |                  | 2                 |                  | 2                   |                  | 1                 |                  | 2                   |                  | 1                 |                  | 2                   |                  | 1                 |                  | Reeves           |

Note: Designed and rated to comply with ANSI Code B30.5

# SPECIFICATIONS

**Fixed Jib Lift Capacity**

Full Counterweight: 57,600 lbs
Carbody Weight: 14,400

| 160' Boom        |                     |                  |                   |                  |                     |                  |                   |                  |                     |                  |                   |                  |                     |                  |                   |                  |                  |
|------------------|---------------------|------------------|-------------------|------------------|---------------------|------------------|-------------------|------------------|---------------------|------------------|-------------------|------------------|---------------------|------------------|-------------------|------------------|------------------|
| Load Radius (ft) | 30 ft Jib           |                  |                   |                  | 40 ft Jib           |                  |                   |                  | 50 ft Jib           |                  |                   |                  | 60 ft Jib           |                  |                   |                  | Load Radius (ft) |
|                  | Offset Angle (deg.) |                  |                   |                  | Offset Angle (deg.) |                  |                   |                  | Offset Angle (deg.) |                  |                   |                  | Offset Angle (deg.) |                  |                   |                  |                  |
|                  | 10                  |                  | 30                |                  | 10                  |                  | 30                |                  | 10                  |                  | 30                |                  | 10                  |                  | 30                |                  |                  |
|                  | Boom Angle (deg.)   | Rated Load (lbs) | Boom Angle (deg.) | Rated Load (lbs) | Boom Angle (deg.)   | Rated Load (lbs) | Boom Angle (deg.) | Rated Load (lbs) | Boom Angle (deg.)   | Rated Load (lbs) | Boom Angle (deg.) | Rated Load (lbs) | Boom Angle (deg.)   | Rated Load (lbs) | Boom Angle (deg.) | Rated Load (lbs) |                  |
| 45               | 79.2                | 24,000*          |                   |                  |                     |                  |                   |                  |                     |                  |                   |                  |                     |                  |                   |                  | 45               |
| 50               | 77.7                | 24,000*          |                   |                  | 79.0                | 22,830*          |                   |                  |                     |                  |                   |                  |                     |                  |                   |                  | 50               |
| 55               | 76.1                | 22,350           | 78.8              | 19,640*          | 77.5                | 22,000*          |                   |                  | 78.7                | 20,000*          |                   |                  | 79.6                | 18,000*          |                   |                  | 55               |
| 60               | 74.5                | 19,750           | 77.2              | 18,950*          | 76.0                | 20,030           | 79.5              | 15,120*          | 77.3                | 19,200*          |                   |                  | 78.3                | 17,800*          |                   |                  | 60               |
| 65               | 73.0                | 17,590           | 75.6              | 18,290           | 74.6                | 17,850           | 78.0              | 14,590*          | 75.9                | 18,030           | 80.0              | 11,440*          | 76.9                | 17,060*          |                   |                  | 65               |
| 70               | 71.4                | 15,760           | 74.0              | 16,400           | 73.1                | 16,000           | 76.4              | 14,100*          | 74.5                | 16,180           | 78.5              | 11,060*          | 75.6                | 16,090*          |                   |                  | 70               |
| 75               | 69.7                | 14,100           | 72.3              | 14,680           | 71.5                | 14,320           | 74.8              | 13,640*          | 72.9                | 14,500           | 77.0              | 10,670*          | 74.2                | 14,610           | 78.9              | 8,810*           | 75               |
| 80               | 68.1                | 12,780           | 70.7              | 13,290           | 70.0                | 12,980           | 73.2              | 13,220*          | 71.5                | 13,130           | 75.5              | 10,330*          | 72.8                | 13,240           | 77.5              | 8,530*           | 80               |
| 85               | 66.5                | 11,610           | 69.0              | 12,080           | 68.4                | 11,810           | 71.7              | 12,630           | 70.1                | 11,940           | 74.0              | 10,030*          | 71.4                | 12,050           | 76.1              | 8,240*           | 85               |
| 90               | 64.8                | 10,580           | 67.3              | 11,020           | 66.9                | 10,780           | 70.1              | 11,530           | 68.6                | 10,910           | 72.5              | 9,740*           | 70.0                | 11,000           | 74.6              | 8,000*           | 90               |
| 95               | 63.0                | 9,630            | 65.5              | 10,000           | 65.2                | 9,780            | 68.4              | 10,510           | 67.0                | 9,920            | 70.9              | 9,450*           | 68.5                | 10,000           | 73.1              | 7,760*           | 95               |
| 100              | 61.3                | 8,810            | 63.8              | 9,170            | 63.6                | 8,970            | 66.7              | 9,650            | 65.5                | 9,100            | 69.3              | 9,210*           | 67.1                | 9,190            | 71.6              | 7,530*           | 100              |
| 105              | 59.6                | 8,090            | 62.0              | 8,420            | 62.0                | 8,240            | 65.1              | 8,880            | 64.0                | 8,370            | 67.8              | 8,970*           | 65.7                | 8,440            | 70.2              | 7,310*           | 105              |
| 110              | 57.9                | 7,450            | 60.2              | 7,730            | 60.4                | 7,580            | 63.4              | 8,170            | 62.5                | 7,690            | 66.2              | 8,420*           | 64.2                | 7,780            | 68.7              | 7,140*           | 110              |
| 115              | 55.9                | 6,810            | 58.2              | 7,070            | 58.6                | 6,940            | 61.5              | 7,490            | 60.8                | 7,050            | 64.5              | 7,730            | 62.7                | 7,140            | 67.0              | 6,940*           | 115              |
| 120              | 54.1                | 6,280            | 56.3              | 6,520            | 56.9                | 6,410            | 59.8              | 6,920            | 59.2                | 6,500            | 62.8              | 7,140            | 61.2                | 6,590            | 65.5              | 6,790*           | 120              |
| 125              | 52.2                | 5,770            | 54.4              | 5,990            | 55.1                | 5,900            | 58.0              | 6,390            | 57.6                | 6,010            | 61.1              | 6,610            | 59.7                | 6,080            | 63.9              | 6,610*           | 125              |
| 130              | 50.3                | 5,330            | 52.4              | 5,530            | 53.3                | 5,440            | 56.1              | 5,900            | 55.9                | 5,550            | 59.4              | 6,100            | 58.1                | 5,620            | 62.3              | 6,280            | 130              |
| 135              | 48.2                | 4,890            |                   |                  | 51.5                | 5,020            | 54.2              | 5,440            | 54.2                | 5,130            | 57.6              | 5,640            | 56.5                | 5,180            | 60.7              | 5,820            | 135              |
| 140              | 46.0                | 4,400            |                   |                  | 49.5                | 4,560            | 52.1              | 5,000            | 52.4                | 4,670            | 55.7              | 5,200            | 54.8                | 4,760            | 58.9              | 5,350            | 140              |
| 145              | 43.9                | 4,010            |                   |                  | 47.5                | 4,140            |                   |                  | 50.6                | 4,250            | 53.8              | 4,800            | 53.2                | 4,320            | 57.1              | 4,960            | 145              |
| 150              | 41.6                | 3,610            |                   |                  | 45.5                | 3,740            |                   |                  | 48.7                | 3,850            | 51.9              | 4,430            | 51.5                | 3,920            | 55.4              | 4,580            | 150              |
| 155              | 39.3                | 3,260            |                   |                  | 43.4                | 3,370            |                   |                  | 46.8                | 3,480            |                   |                  | 49.7                | 3,540            | 53.6              | 4,230            | 155              |
| 160              | 36.6                | 2,910            |                   |                  | 41.1                | 3,020            |                   |                  | 44.8                | 3,100            |                   |                  | 47.8                | 3,170            | 51.5              | 3,810            | 160              |
| 165              | 33.9                | 2,600            |                   |                  | 38.8                | 2,710            |                   |                  | 42.7                | 2,790            |                   |                  | 46.0                | 2,860            |                   |                  | 165              |
| 170              |                     |                  |                   |                  |                     |                  |                   |                  |                     |                  |                   |                  | 44.1                | 2,550            |                   |                  | 170              |
| Reeves           | 2                   |                  | 2                 |                  | 2                   |                  | 1                 |                  | 2                   |                  | 1                 |                  | 2                   |                  | 1                 |                  | Reeves           |

| 170' Boom        |                     |                  |                   |                  |                     |                  |                   |                  |                     |                  |                   |                  |                     |                  |                   |                  |                  |
|------------------|---------------------|------------------|-------------------|------------------|---------------------|------------------|-------------------|------------------|---------------------|------------------|-------------------|------------------|---------------------|------------------|-------------------|------------------|------------------|
| Load Radius (ft) | 30 ft Jib           |                  |                   |                  | 40 ft Jib           |                  |                   |                  | 50 ft Jib           |                  |                   |                  | 60 ft Jib           |                  |                   |                  | Load Radius (ft) |
|                  | Offset Angle (deg.) |                  |                   |                  | Offset Angle (deg.) |                  |                   |                  | Offset Angle (deg.) |                  |                   |                  | Offset Angle (deg.) |                  |                   |                  |                  |
|                  | 10                  |                  | 30                |                  | 10                  |                  | 30                |                  | 10                  |                  | 30                |                  | 10                  |                  | 30                |                  |                  |
|                  | Boom Angle (deg.)   | Rated Load (lbs) | Boom Angle (deg.) | Rated Load (lbs) | Boom Angle (deg.)   | Rated Load (lbs) | Boom Angle (deg.) | Rated Load (lbs) | Boom Angle (deg.)   | Rated Load (lbs) | Boom Angle (deg.) | Rated Load (lbs) | Boom Angle (deg.)   | Rated Load (lbs) | Boom Angle (deg.) | Rated Load (lbs) |                  |
| 45               | 79.8                | 23,360*          |                   |                  |                     |                  |                   |                  |                     |                  |                   |                  |                     |                  |                   |                  | 45               |
| 50               | 78.3                | 22,830*          |                   |                  | 79.6                | 20,800*          |                   |                  |                     |                  |                   |                  |                     |                  |                   |                  | 50               |
| 55               | 76.8                | 22,150           | 79.4              | 19,860*          | 78.1                | 20,000*          |                   |                  | 79.2                | 18,500*          |                   |                  | 80.0                | 17,000*          |                   |                  | 55               |
| 60               | 75.3                | 19,550           | 77.9              | 19,220*          | 76.7                | 19,200*          | 80.0              | 15,290*          | 77.9                | 17,800*          |                   |                  | 78.8                | 16,400*          |                   |                  | 60               |
| 65               | 73.8                | 17,370           | 76.4              | 18,120           | 75.3                | 17,630           | 78.6              | 14,770*          | 76.5                | 17,100*          |                   |                  | 77.5                | 15,800*          |                   |                  | 65               |
| 70               | 72.4                | 15,560           | 74.9              | 16,220           | 73.9                | 15,800           | 77.1              | 14,300*          | 75.2                | 15,980           | 79.1              | 11,170*          | 76.2                | 15,200*          |                   |                  | 70               |
| 75               | 70.8                | 13,880           | 73.2              | 14,500           | 72.4                | 14,130           | 75.6              | 13,840*          | 73.8                | 14,280           | 77.6              | 10,800*          | 74.9                | 13,980*          | 79.4              | 8,900*           | 75               |
| 80               | 69.3                | 12,560           | 71.7              | 13,090           | 71.0                | 12,760           | 74.1              | 13,420*          | 72.4                | 12,940           | 76.2              | 10,490*          | 73.6                | 13,050           | 78.1              | 8,610*           | 80               |
| 85               | 67.7                | 11,390           | 70.1              | 11,880           | 69.5                | 11,590           | 72.6              | 12,450           | 71.0                | 11,750           | 74.8              | 10,180*          | 72.3                | 11,860           | 76.7              | 8,350*           | 85               |
| 90               | 66.2                | 10,360           | 68.6              | 10,820           | 68.1                | 10,560           | 71.1              | 11,370           | 69.6                | 10,690           | 73.4              | 9,890*           | 71.0                | 10,800           | 75.4              | 8,110*           | 90               |
| 95               | 64.5                | 9,390            | 66.9              | 9,810            | 66.5                | 9,560            | 69.5              | 10,330           | 68.2                | 9,720            | 71.9              | 9,610*           | 69.5                | 9,810            | 73.9              | 7,870*           | 95               |
| 100              | 62.9                | 8,590            | 65.2              | 8,970            | 65.0                | 8,750            | 68.0              | 9,470            | 66.7                | 8,880            | 70.4              | 9,360*           | 68.2                | 8,970            | 72.5              | 7,640*           | 100              |
| 105              | 61.3                | 7,870            | 63.6              | 8,220            | 63.5                | 8,020            | 66.4              | 8,680            | 65.3                | 8,150            | 68.9              | 8,970            | 66.8                | 8,220            | 71.1              | 7,450*           | 105              |
| 110              | 59.7                | 7,200            | 61.9              | 7,530            | 61.9                | 7,360            | 64.8              | 8,000            | 63.9                | 7,470            | 67.4              | 8,240            | 65.5                | 7,560            | 69.7              | 7,250*           | 110              |
| 115              | 57.9                | 6,560            | 60.1              | 6,870            | 60.3                | 6,720            | 63.1              | 7,310            | 62.3                | 6,830            | 65.8              | 7,560            | 64.0                | 6,920            | 68.2              | 7,050*           | 115              |
| 120              | 56.2                | 6,040            | 58.3              | 6,300            | 58.7                | 6,170            | 61.5              | 6,720            | 60.8                | 6,280            | 64.3              | 6,960            | 62.6                | 6,340            | 66.7              | 6,900*           | 120              |
| 125              | 54.4                | 5,550            | 56.5              | 5,790            | 57.0                | 5,680            | 59.8              | 6,190            | 59.3                | 5,770            | 62.7              | 6,410            | 61.1                | 5,860            | 65.2              | 6,610            | 125              |
| 130              | 52.6                | 5,070            | 54.7              | 5,310            | 55.4                | 5,220            | 58.1              | 5,700            | 57.7                | 5,310            | 61.1              | 5,930            | 59.7                | 5,370            | 63.7              | 6,100            | 130              |
| 135              | 50.8                | 4,560            | 52.8              | 4,850            | 53.7                | 4,730            | 56.4              | 5,260            | 56.1                | 4,870            | 59.5              | 5,460            | 58.2                | 4,960            | 62.2              | 5,640            | 135              |
| 140              | 48.8                | 4,070            |                   |                  | 51.8                | 4,230            | 54.4              | 4,820            | 54.4                | 4,360            | 57.7              | 5,000            | 56.6                | 4,450            | 60.5              | 5,180            | 140              |
| 145              | 46.9                | 3,650            |                   |                  | 50.1                | 3,810            | 52.6              | 4,360            | 52.8                | 3,920            | 56.0              | 4,620            | 55.1                | 4,010            | 58.9              | 4,780            | 145              |
| 150              | 44.8                | 3,280            |                   |                  | 48.2                | 3,410            |                   |                  | 51.1                | 3,520            | 54.2              | 4,160            | 53.5                | 3,610            | 57.3              | 4,380            | 150              |
| 155              | 42.7                | 2,930            |                   |                  | 46.3                | 3,060            |                   |                  | 49.3                | 3,150            | 52.4              | 3,760            | 51.9                | 3,240            | 55.6              | 3,960            | 155              |
| 160              | 40.4                | 2,570            |                   |                  | 44.2                | 2,680            |                   |                  | 47.4                | 2,790            |                   |                  | 50.2                | 2,860            | 53.8              | 3,540            | 160              |
| 165              |                     |                  |                   |                  |                     |                  |                   |                  |                     |                  |                   |                  | 48.5                | 2,530            | 52.0              | 3,170            | 165              |
| Reeves           | 2                   |                  | 2                 |                  | 2                   |                  | 1                 |                  | 2                   |                  | 2                 |                  | 2                   |                  | 1                 |                  | Reeves           |

Note: Designed and rated to comply with ANSI Code B30.5



# SPECIFICATIONS

**Fixed Jib Lift Capacity**

Full Counterweight: 57,600 lbs
Carbody Weight: 14,400

| 180' Boom        |                     |                  |                   |                  |                     |                  |                   |                  |                     |                  |                   |                  |                     |                  |                   |                  |                  |
|------------------|---------------------|------------------|-------------------|------------------|---------------------|------------------|-------------------|------------------|---------------------|------------------|-------------------|------------------|---------------------|------------------|-------------------|------------------|------------------|
| Load Radius (ft) | 30 ft Jib           |                  |                   |                  | 40 ft Jib           |                  |                   |                  | 50 ft Jib           |                  |                   |                  | 60 ft Jib           |                  |                   |                  | Load Radius (ft) |
|                  | Offset Angle (deg.) |                  |                   |                  | Offset Angle (deg.) |                  |                   |                  | Offset Angle (deg.) |                  |                   |                  | Offset Angle (deg.) |                  |                   |                  |                  |
|                  | 10                  |                  | 30                |                  | 10                  |                  | 30                |                  | 10                  |                  | 30                |                  | 10                  |                  | 30                |                  |                  |
|                  | Boom Angle (deg.)   | Rated Load (lbs) | Boom Angle (deg.) | Rated Load (lbs) | Boom Angle (deg.)   | Rated Load (lbs) | Boom Angle (deg.) | Rated Load (lbs) | Boom Angle (deg.)   | Rated Load (lbs) | Boom Angle (deg.) | Rated Load (lbs) | Boom Angle (deg.)   | Rated Load (lbs) | Boom Angle (deg.) | Rated Load (lbs) |                  |
| 50               | 78.9                | 19,770*          |                   |                  |                     |                  |                   |                  |                     |                  |                   |                  |                     |                  |                   |                  | 50               |
| 55               | 77.4                | 19,240*          | 79.9              | 19,060*          | 78.7                | 18,500*          |                   |                  | 79.7                | 17,000*          |                   |                  |                     |                  |                   |                  | 55               |
| 60               | 76.0                | 18,760*          | 78.5              | 18,580*          | 77.3                | 17,800*          |                   |                  | 78.4                | 16,400*          |                   |                  | 79.3                | 15,000*          |                   |                  | 60               |
| 65               | 74.6                | 17,190           | 77.1              | 17,960           | 76.0                | 17,100*          | 79.1              | 14,740*          | 77.1                | 15,800*          |                   |                  | 78.0                | 14,500*          |                   |                  | 65               |
| 70               | 73.2                | 15,360           | 75.6              | 16,070           | 74.7                | 15,630           | 77.7              | 14,460*          | 75.9                | 15,200*          | 79.6              | 11,300*          | 76.8                | 14,000*          |                   |                  | 70               |
| 75               | 71.7                | 13,710           | 74.1              | 14,350           | 73.2                | 13,950           | 76.3              | 14,020*          | 74.5                | 13,980*          | 78.2              | 10,930*          | 75.5                | 13,500*          | 79.9              | 8,990*           | 75               |
| 80               | 70.3                | 12,360           | 72.6              | 12,940           | 71.9                | 12,580           | 74.9              | 13,580           | 73.2                | 12,760           | 76.9              | 10,600*          | 74.3                | 12,870           | 78.6              | 8,700*           | 80               |
| 85               | 68.8                | 11,190           | 71.2              | 11,720           | 70.5                | 11,410           | 73.5              | 12,320           | 71.9                | 11,570           | 75.5              | 10,310*          | 73.0                | 11,680           | 77.3              | 8,460*           | 85               |
| 90               | 67.4                | 10,180           | 69.7              | 10,640           | 69.1                | 10,360           | 72.1              | 11,220           | 70.6                | 10,510           | 74.2              | 10,030*          | 71.8                | 10,620           | 76.0              | 8,200*           | 90               |
| 95               | 65.8                | 9,190            | 68.1              | 9,630            | 67.6                | 9,390            | 70.5              | 10,180           | 69.2                | 9,520            | 72.7              | 9,740*           | 70.4                | 9,630            | 74.6              | 7,950*           | 95               |
| 100              | 64.3                | 8,390            | 66.5              | 8,790            | 66.2                | 8,570            | 69.1              | 9,320            | 67.8                | 8,700            | 71.4              | 9,500*           | 69.2                | 8,790            | 73.3              | 7,760*           | 100              |
| 105              | 62.8                | 7,670            | 65.0              | 8,040            | 64.8                | 7,820            | 67.6              | 8,550            | 66.5                | 7,950            | 70.0              | 8,810            | 67.9                | 8,040            | 72.0              | 7,530*           | 105              |
| 110              | 61.3                | 7,010            | 63.4              | 7,360            | 63.3                | 7,160            | 66.1              | 7,840            | 65.1                | 7,290            | 68.5              | 8,110            | 66.6                | 7,360            | 70.7              | 7,360*           | 110              |
| 115              | 59.6                | 6,370            | 61.7              | 6,670            | 61.8                | 6,520            | 64.5              | 7,160            | 63.6                | 6,630            | 67.0              | 7,400            | 65.2                | 6,720            | 69.2              | 7,160*           | 115              |
| 120              | 58.0                | 5,840            | 60.1              | 6,120            | 60.3                | 5,970            | 63.0              | 6,560            | 62.2                | 6,080            | 65.6              | 6,810            | 63.8                | 6,170            | 67.8              | 7,010*           | 120              |
| 125              | 56.4                | 5,310            | 58.4              | 5,590            | 58.8                | 5,460            | 61.4              | 6,040            | 60.8                | 5,570            | 64.1              | 6,260            | 62.5                | 5,660            | 66.4              | 6,480            | 125              |
| 130              | 54.7                | 4,780            | 56.7              | 5,110            | 57.2                | 4,960            | 59.8              | 5,550            | 59.3                | 5,090            | 62.6              | 5,770            | 61.1                | 5,180            | 65.0              | 5,970            | 130              |
| 135              | 53.0                | 4,270            | 55.0              | 4,580            | 55.6                | 4,450            | 58.2              | 5,090            | 57.8                | 4,580            | 61.1              | 5,310            | 59.7                | 4,670            | 63.6              | 5,480            | 135              |
| 140              | 51.2                | 3,790            | 53.1              | 4,070            | 53.9                | 3,940            | 56.4              | 4,580            | 56.2                | 4,070            | 59.4              | 4,850            | 58.2                | 4,160            | 62.0              | 5,020            | 140              |
| 145              | 49.4                | 3,370            | 51.3              | 3,610            | 52.3                | 3,520            | 54.7              | 4,120            | 54.7                | 3,630            | 57.8              | 4,380            | 56.8                | 3,720            | 60.5              | 4,620            | 145              |
| 150              | 47.6                | 2,970            |                   |                  | 50.6                | 3,130            | 53.0              | 3,680            | 53.1                | 3,240            | 56.2              | 3,940            | 55.3                | 3,320            | 59.0              | 4,160            | 150              |
| 155              | 45.7                | 2,600            |                   |                  | 48.8                | 2,750            |                   |                  | 51.5                | 2,860            | 54.5              | 3,520            | 53.8                | 2,930            | 57.5              | 3,740            | 155              |
| 160              |                     |                  |                   |                  |                     |                  |                   |                  |                     |                  | 52.7              | 3,100            | 52.2                | 2,550            | 55.8              | 3,320            | 160              |
| 165              |                     |                  |                   |                  |                     |                  |                   |                  |                     |                  |                   |                  |                     |                  | 54.1              | 2,950            | 165              |
| 170              |                     |                  |                   |                  |                     |                  |                   |                  |                     |                  |                   |                  |                     |                  | 52.4              | 2,600            | 170              |
| Reeves           | 2                   |                  | 2                 |                  | 2                   |                  | 1                 |                  | 1                   |                  | 1                 |                  | 1                   |                  | 1                 |                  | Reeves           |

*Note: Designed and rated to comply with ANSI Code B30.5*

# SPECIFICATIONS

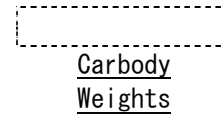
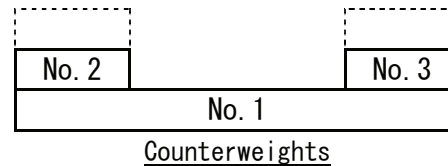
## Supplemental Data - Clamshell

- Rated loads included in the charts are the maximum allowable freely suspended loads at a given boom length, boom angle and load radius, and have been determined for the machine standing level on firm supporting surface under ideal operating conditions. The user must limit or de-rate rated loads to allow for adverse conditions (such as soft or uneven ground, out-of-level conditions, wind, side loads, pendulum action, jerking or sudden stopping of loads, inexperience of personnel, multiple machine lifts, and traveling with a load).
- Rated loads do not exceed 66% of minimum tipping loads. Rated loads based on factors other than machine stability such as structural competence are shown by asterisk \* in the charts.
- The machine must be reeved and set-up as stated in the operation manual and all the instruction manuals if these manuals are missing, obtain replacements.
  - Machine shall be positively secured to prevent shifting.
  - Boom backstops are required for all boom length.
  - Gantry must be fully raised position for all operations.
  - Crawlers must be fully extended and be locked in position.
  - Must have 39,000 lbs (2) Counterweights installed, and without carbody weights.
- Do not attempt to lift where no radius on load is listed as crane may tip or collapse.
- Attempting to lift more than rated loads may cause machine to tip or collapse. Do not tip machine to determine rated loads.
- Weight of hooks, hook blocks, slings and other lifting devices are a part of the total load. Their total weight must be subtracted from the rated load to obtain the weight that can be lifted.
- The boom should be erected over the front of the crawlers, not laterally.
- Least stable position is over the side.
- Maximum hoist load for number of reeving parts of line for hoist rope.

### Maximum Load for Main Boom

|                      |        |
|----------------------|--------|
| No. of Parts of line | 1      |
| Maximum Loads (lbs)  | 16,000 |

- Rated loads listed apply only to the machine as originally manufactured and designed by KOBELCO CRANES CO., LTD. Modifications to this machine or use of equipment other than that specified can reduce operating capacity.
- Assembling the Counterweight  
39,000 lbs counterweight (No. 1 ~ No. 3)  
Without Carbody weights



Operation of this equipment in excess of rated loads or disregard of instruction voids the warranty.

## SPECIFICATIONS

## Clamshell

**Boom:**

Welded lattice construction using tubular, high-tensile steel chords with pin connections between each section.

Basic boom length: 40 ft (12.2 m)

Max. boom length: 70 ft (21.3 m)

Limit on clamshell bucket weight: 4,600 lbs (2,100 kg)

Optional tagline: Hydraulic operated type and spring type.

**Boom Component Chart:**

| Boom length ft (m) | Boom arrangement         |
|--------------------|--------------------------|
| 40 (12.2)          | Base-Tip                 |
| 50 (15.2)          | Base-A-Tip               |
| 60 (18.3)          | Base-A-A-Tip, Base-B-Tip |
| 70 (21.3)          | Base-A-B-Tip             |

Base = Boom Base

Insert: A = 10 ft (3.05 m)

B = 20 ft (6.10 m)

C = 40 ft (12.2 m)

Tip = Boom Tip

- Figures represent maximum allowable capacity, and assume level, ground and ideal working conditions.
- Capacities are calculated at 66% of the minimum tipping loads.
- Capacities are maximum recommended by PCSA Standard #4. Allowances must be made by the user for such unfavorable conditions as a sort of uneven supporting surface, rapid cycle operations, or bucket.
- The combined weight of the bucket and load must not exceed these capacities.

3 Counterweights (39,000 lbs) - Without Carbody weights - Crawlers in extended position.

| 40' Boom         |                   |                       | 50' Boom         |                   |                       | 60' Boom         |                   |                       | 70' Boom         |                   |                       |
|------------------|-------------------|-----------------------|------------------|-------------------|-----------------------|------------------|-------------------|-----------------------|------------------|-------------------|-----------------------|
| Load Radius (ft) | Boom Angle (deg.) | 360° Rated Load (lbs) | Load Radius (ft) | Boom Angle (deg.) | 360° Rated Load (lbs) | Load Radius (ft) | Boom Angle (deg.) | 360° Rated Load (lbs) | Load Radius (ft) | Boom Angle (deg.) | 360° Rated Load (lbs) |
| 22.0             | 63.6              | 16,000 *              | 26.0             | 64.2              | 16,000 *              | 30.0             | 64.5              | 16,000 *              | 34.0             | 64.8              | 16,000 *              |
| 24.0             | 60.3              | 16,000 *              | 28.0             | 61.6              | 16,000 *              | 32.0             | 62.4              | 16,000 *              | 36.0             | 63.0              | 16,000 *              |
| 26.0             | 56.9              | 16,000 *              | 30.0             | 58.9              | 16,000 *              | 34.0             | 60.2              | 16,000 *              | 38.0             | 61.1              | 16,000 *              |
| 28.0             | 53.4              | 16,000 *              | 32.0             | 56.2              | 16,000 *              | 36.0             | 58.0              | 16,000 *              | 40.0             | 59.2              | 16,000 *              |
| 30.0             | 49.7              | 16,000 *              | 34.0             | 53.3              | 16,000 *              | 38.0             | 55.7              | 16,000 *              | 42.0             | 57.3              | 16,000 *              |
| 32.0             | 45.7              | 16,000 *              | 36.0             | 50.4              | 16,000 *              | 40.0             | 53.3              | 16,000 *              | 44.0             | 55.3              | 15,800 *              |
| 34.0             | 41.5              | 16,000 *              | 38.0             | 47.3              | 16,000 *              | 42.0             | 50.9              | 16,000 *              | 46.0             | 53.3              | 15,600 *              |
| 36.0             | 36.9              | 16,000 *              | 40.0             | 44.1              | 16,000 *              | 44.0             | 48.3              | 16,000 *              | 48.0             | 51.2              | 15,200 *              |
| 38.0             | 31.6              | 16,000 *              | 42.0             | 40.6              | 16,000 *              | 46.0             | 45.7              | 16,000 *              | 50.0             | 49.0              | 14,300 *              |
| 40.0             | 25.5              | 16,000 *              | 44.0             | 36.9              | 16,000 *              | 48.0             | 42.9              | 15,200 *              | 52.0             | 46.8              | 13,600 *              |
|                  |                   |                       | 46.0             | 32.8              | 16,000 *              | 50.0             | 40.0              | 14,500                | 54.0             | 44.5              | 13,000 *              |
|                  |                   |                       | 48.0             | 28.2              | 15,400 *              | 52.0             | 36.9              | 13,600                | 56.0             | 42.1              | 12,300 *              |
|                  |                   |                       |                  |                   |                       | 54.0             | 33.5              | 13,000                | 58.0             | 39.6              | 11,600 *              |
|                  |                   |                       |                  |                   |                       | 56.0             | 29.8              | 12,300                | 60.0             | 36.9              | 11,200 *              |
|                  |                   |                       |                  |                   |                       | 58.0             | 25.6              | 11,900                | 62.0             | 34.0              | 10,800 *              |
|                  |                   |                       |                  |                   |                       |                  |                   |                       | 64.0             | 30.9              | 10,100 *              |
|                  |                   |                       |                  |                   |                       |                  |                   |                       | 66.0             | 27.5              | 9,700 *               |



## SPECIFICATIONS

## Supplemental Data - Barge

- Rated loads included in the charts are the maximum allowable freely suspended loads at a given boom length, boom angle and load radius, and have been determined for the machine standing level on firm supporting surface under ideal operating conditions. The user must limit or de-rate rated loads to allow for adverse conditions (such as soft or uneven ground, out-of-level conditions, wind, side loads, pendulum action, jerking or sudden stopping of loads, inexperience of personnel, multiple machine lifts, and traveling with a load).
- Rated loads do not exceed 75% of minimum tipping loads. Rated loads based on factors other than machine stability such as structural competence are shown by asterisk \* in the charts.
- The machine must be reeved and set-up as stated in the operation manual and all the instruction manuals if these manuals are missing, obtain replacements.
  - Machine shall be positively secured to prevent shifting.
  - Boom backstops are required for all boom length.
  - Gantry must be fully raised position for all operations.
  - Crawlers must be fully extended and be locked in position.
  - Must have 57,600 lbs (5) Counterweights fully installed.
  - Must have 14,400 lbs (2) Carbody weights fully installed.
- Do not attempt to lift where no radius on load is listed as crane may tip or collapse.
- Attempting to lift more than rated loads may cause machine to tip or collapse. Do not tip machine to determine rated loads.
- Weight of hooks, hook blocks, slings and other lifting devices are a part of the total load. Their total weight must be subtracted from the rated load to obtain the weight that can be lifted.
- When lifting over boom point with jib or auxiliary sheave, rated loads for the boom must be deducted as shown below.

| Jib Length   | Aux Sheave | 30 ft          | 40 ft | 50 ft | 60 ft |
|--------------|------------|----------------|-------|-------|-------|
| Deduct (lbs) | 320        | Not Applicable |       |       |       |

When auxiliary sheave is used for 10 or 9 reeving parts of line, it is not required to deduct 320 lbs from rated loads.

- To install the jib is prohibited when the machine is on a barge.
- The total load that can be lifted over an auxiliary sheave is the value for 320 lbs deducted from rated load for the boom without auxiliary sheave, but it should not exceed 17,000 lbs.

- Boom lengths that can attach auxiliary sheave are from 40 ft (12.2 m) to 190 ft (57.9 m).
- The boom should be erected over the front of the crawlers, not laterally.
- Least stable position is over the side.
- Maximum hoist load for number of reeving parts of line for hoist rope.

## Maximum Load for Main Boom

| No. of Parts of line | 1      | 2      | 3      | 4      | 5      |
|----------------------|--------|--------|--------|--------|--------|
| Maximum Loads (lbs)  | 17,000 | 34,000 | 51,000 | 68,000 | 85,000 |

| No. of Parts of line | 6       | 7       | 8       | 9       | 10      |
|----------------------|---------|---------|---------|---------|---------|
| Maximum Loads (lbs)  | 102,000 | 119,000 | 136,000 | 153,000 | 170,000 |

## Maximum Load for Auxiliary Sheave

| No. of Parts of line | 1      |
|----------------------|--------|
| Maximum Loads (lbs)  | 17,000 |

- Weight of recommended hook block.

| Hook Block   | 85 t  | 55 t  | 35 t  | 21 t | 7 t ball hook |
|--------------|-------|-------|-------|------|---------------|
| Weight (lbs) | 1,765 | 1,545 | 1,105 | 885  | 355           |

Warning: If the weight of the hook block to be used is light than the recommended weight, the jib may turn over back or will be difficult to lower the empty hook block.

- Rated loads listed apply only to the machine as originally manufactured and designed by KOBELCO CRANES CO., LTD. Modifications to this machine or use of equipment other than that specified can reduce operating capacity.
- Designed and rated to comply with ANSI Code B30.5.

Operation of this equipment in excess of rated loads or disregard of instruction voids the warranty.





## SPECIFICATIONS

## Barge

5 Counterweights (57,600 lbs) - 2 Carbody weights (14,400 lbs) - Crawlers in extended position.

| 40' Boom         |                   |                       |                       |                       |                       | 50' Boom         |                   |                       |                       |                       |                       | 60' Boom         |                   |                       |                       |                       |                       |
|------------------|-------------------|-----------------------|-----------------------|-----------------------|-----------------------|------------------|-------------------|-----------------------|-----------------------|-----------------------|-----------------------|------------------|-------------------|-----------------------|-----------------------|-----------------------|-----------------------|
|                  |                   | 360° Rated Load (lbs) |                       |                       |                       |                  |                   | 360° Rated Load (lbs) |                       |                       |                       |                  |                   | 360° Rated Load (lbs) |                       |                       |                       |
| Load Radius (ft) | Boom Angle (deg.) | 0 Degree Machine List | 1 Degree Machine List | 2 Degree Machine List | 2 Degree Machine List | Load Radius (ft) | Boom Angle (deg.) | 0 Degree Machine List | 1 Degree Machine List | 2 Degree Machine List | 2 Degree Machine List | Load Radius (ft) | Boom Angle (deg.) | 0 Degree Machine List | 1 Degree Machine List | 2 Degree Machine List | 2 Degree Machine List |
| 10.0             | 81.7              | 170,000 *             |                       |                       |                       | 12.0             | 81.1              | 166,400 *             |                       |                       |                       | 13.0             | 81.6              | 154,200 *             |                       |                       |                       |
| 11.0             | 80.3              | 170,000 *             |                       |                       |                       | 13.0             | 79.9              | 154,400 *             |                       |                       |                       | 14.0             | 80.7              | 143,800 *             |                       |                       |                       |
| 12.0             | 78.8              | 266,600 *             |                       |                       |                       | 14.0             | 78.8              | 144,000 *             |                       |                       |                       | 15.0             | 79.7              | 134,700 *             |                       |                       |                       |
| 13.0             | 77.4              | 154,600 *             |                       |                       |                       | 15.0             | 77.6              | 134,900 *             |                       |                       |                       | 16.0             | 78.7              | 126,700 *             |                       |                       |                       |
| 14.0             | 75.9              | 144,200 *             |                       |                       |                       | 16.0             | 76.4              | 126,900 *             |                       |                       |                       | 17.0             | 77.7              | 119,500 *             |                       |                       |                       |
| 15.0             | 74.4              | 135,100 *             | 135,100 *             |                       |                       | 17.0             | 75.2              | 119,700 *             |                       |                       |                       | 18.0             | 76.8              | 113,000 *             |                       |                       |                       |
| 16.0             | 72.9              | 127,100 *             | 127,100 *             |                       |                       | 18.0             | 74.0              | 113,200 *             | 105,400               |                       |                       | 19.0             | 75.8              | 105,460               |                       |                       |                       |
| 17.0             | 71.4              | 119,900 *             | 119,900 *             | 105,100               |                       | 19.0             | 72.8              | 105,660               | 97,100                |                       |                       | 20.0             | 74.8              | 97,130                | 89,000                |                       |                       |
| 18.0             | 69.9              | 113,400 *             | 113,400 *             | 100,200               |                       | 20.0             | 71.6              | 97,350                | 90,500                |                       |                       | 22.0             | 72.8              | 83,790                | 77,500                |                       |                       |
| 19.0             | 68.3              | 105,820               | 98,900 *              | 93,300                |                       | 22.0             | 69.2              | 84,010                | 78,800                | 73,500                |                       | 24.0             | 70.8              | 73,560                | 68,500                | 63,600                |                       |
| 20.0             | 66.7              | 97,500                | 92,100                | 86,400                |                       | 24.0             | 66.7              | 73,810                | 69,700                | 65,500                |                       | 26.0             | 68.7              | 65,490                | 61,400                | 57,900                | 51,000                |
| 22.0             | 63.6              | 84,190                | 80,100                | 75,700                | 71,700                | 26.0             | 64.2              | 65,760                | 62,400                | 59,000                | 56,100                | 28.0             | 66.6              | 58,970                | 55,600                | 52,700                | 49,100                |
| 24.0             | 60.3              | 74,000                | 70,800                | 67,300                | 64,700                | 28.0             | 61.6              | 59,230                | 56,400                | 53,700                | 51,400                | 30.0             | 64.5              | 53,570                | 50,700                | 48,200                | 45,800                |
| 26.0             | 56.9              | 65,980                | 63,300                | 60,500                | 58,100                | 30.0             | 58.9              | 53,850                | 51,500                | 49,200                | 47,300                | 32.0             | 62.4              | 49,030                | 46,600                | 44,500                | 42,500                |
| 28.0             | 53.4              | 59,400                | 57,200                | 55,000                | 53,000                | 32.0             | 56.2              | 49,310                | 47,300                | 45,500                | 43,700                | 34.0             | 60.2              | 45,170                | 43,100                | 41,000                | 39,400                |
| 30.0             | 49.7              | 54,100                | 52,300                | 50,400                | 48,700                | 34.0             | 53.3              | 45,480                | 43,700                | 42,200                | 40,700                | 36.0             | 58.0              | 41,840                | 40,000                | 38,400                | 36,900                |
| 32.0             | 45.7              | 49,580                | 48,100                | 46,500                | 45,100                | 36.0             | 50.4              | 42,150                | 40,600                | 39,300                | 38,100                | 38.0             | 55.7              | 38,950                | 37,300                | 35,800                | 34,700                |
| 34.0             | 41.5              | 45,740                | 44,500                | 43,200                | 42,100                | 38.0             | 47.3              | 39,280                | 37,900                | 36,800                | 35,500                | 40.0             | 53.3              | 36,410                | 35,000                | 33,900                | 32,700                |
| 36.0             | 36.9              | 42,460                | 41,400                | 40,300                | 39,400                | 40.0             | 44.1              | 36,750                | 35,700                | 34,800                | 33,800                | 45.0             | 47.0              | 31,230                | 30,200                | 29,300                | 28,500                |
|                  |                   |                       |                       |                       |                       |                  |                   |                       |                       |                       |                       | 50.0             | 40.0              | 27,290                | 26,400                | 25,900                | 25,300                |
| Reeves           |                   | 10                    | 8                     | 7                     | 5                     | Reeves           |                   | 10                    | 7                     | 5                     | 4                     | Reeves           |                   | 10                    | 6                     | 4                     | 4                     |
| 70' Boom         |                   |                       |                       |                       |                       | 80' Boom         |                   |                       |                       |                       |                       | 90' Boom         |                   |                       |                       |                       |                       |
|                  |                   | 360° Rated Load (lbs) |                       |                       |                       |                  |                   | 360° Rated Load (lbs) |                       |                       |                       |                  |                   | 360° Rated Load (lbs) |                       |                       |                       |
| Load Radius (ft) | Boom Angle (deg.) | 0 Degree Machine List | 1 Degree Machine List | 2 Degree Machine List | 2 Degree Machine List | Load Radius (ft) | Boom Angle (deg.) | 0 Degree Machine List | 1 Degree Machine List | 2 Degree Machine List | 2 Degree Machine List | Load Radius (ft) | Boom Angle (deg.) | 0 Degree Machine List | 1 Degree Machine List | 2 Degree Machine List | 2 Degree Machine List |
| 14.0             | 82.0              | 143,600 *             |                       |                       |                       | 16.0             | 81.6              | 126,300 *             |                       |                       |                       | 17.0             | 81.9              | 118,820 *             |                       |                       |                       |
| 15.0             | 81.2              | 134,500 *             |                       |                       |                       | 17.0             | 80.8              | 119,100 *             |                       |                       |                       | 18.0             | 81.2              | 112,400 *             |                       |                       |                       |
| 16.0             | 80.3              | 126,500 *             |                       |                       |                       | 18.0             | 80.1              | 112,600 *             |                       |                       |                       | 19.0             | 80.6              | 105,220               |                       |                       |                       |
| 17.0             | 79.5              | 119,300 *             |                       |                       |                       | 19.0             | 79.4              | 105,290               |                       |                       |                       | 20.0             | 79.9              | 96,870                |                       |                       |                       |
| 18.0             | 78.7              | 112,800 *             |                       |                       |                       | 20.0             | 78.6              | 96,930                |                       |                       |                       | 22.0             | 78.6              | 83,480                |                       |                       |                       |
| 19.0             | 77.8              | 105,400               |                       |                       |                       | 22.0             | 77.2              | 83,550                |                       |                       |                       | 24.0             | 77.3              | 73,230                |                       |                       |                       |
| 20.0             | 77.0              | 97,060                |                       |                       |                       | 24.0             | 75.7              | 73,320                |                       |                       |                       | 26.0             | 76.0              | 65,140                |                       |                       |                       |
| 22.0             | 75.3              | 83,700                |                       |                       |                       | 26.0             | 74.2              | 65,230                | 60,000                |                       |                       | 28.0             | 74.7              | 58,570                | 53,700                |                       |                       |
| 24.0             | 73.6              | 73,470                | 67,700                |                       |                       | 28.0             | 72.7              | 58,680                | 54,200                |                       |                       | 30.0             | 73.4              | 53,150                | 49,000                |                       |                       |
| 26.0             | 71.9              | 65,380                | 60,600                |                       |                       | 30.0             | 71.2              | 53,260                | 49,500                |                       |                       | 32.0             | 72.0              | 48,580                | 45,000                | 41,700                |                       |
| 28.0             | 70.1              | 58,840                | 54,900                | 51,600                |                       | 32.0             | 69.7              | 48,690                | 45,500                | 42,800                |                       | 34.0             | 70.7              | 44,700                | 41,700                | 38,900                |                       |
| 30.0             | 68.4              | 53,430                | 50,200                | 47,300                | 42,400                | 34.0             | 68.1              | 44,840                | 42,000                | 39,700                | 35,800                | 36.0             | 69.3              | 41,380                | 38,700                | 36,300                |                       |
| 32.0             | 66.6              | 48,890                | 46,100                | 43,700                | 40,900                | 36.0             | 66.6              | 41,490                | 39,000                | 36,900                | 34,500                | 38.0             | 68.0              | 38,440                | 36,100                | 34,200                |                       |
| 34.0             | 64.8              | 45,030                | 42,500                | 40,500                | 38,400                | 38.0             | 65.0              | 38,580                | 36,500                | 34,600                | 32,700                | 40.0             | 66.6              | 35,890                | 34,000                | 32,100                | 29,900                |
| 36.0             | 63.0              | 41,680                | 39,500                | 37,700                | 35,900                | 40.0             | 63.4              | 36,020                | 34,300                | 32,600                | 30,900                | 45.0             | 63.0              | 30,660                | 29,300                | 27,700                | 26,400                |
| 38.0             | 61.1              | 38,800                | 36,900                | 35,000                | 33,900                | 45.0             | 59.3              | 30,820                | 29,500                | 28,200                | 27,000                | 50.0             | 59.4              | 26,670                | 25,500                | 24,300                | 23,400                |
| 40.0             | 59.2              | 36,240                | 34,800                | 33,300                | 31,900                | 50.0             | 55.0              | 26,820                | 25,700                | 24,700                | 23,800                | 55.0             | 55.6              | 23,520                | 22,500                | 21,600                | 20,800                |
| 45.0             | 54.3              | 31,040                | 29,900                | 28,800                | 27,700                | 55.0             | 50.5              | 23,670                | 22,800                | 22,000                | 21,300                | 60.0             | 51.6              | 20,960                | 20,100                | 19,400                | 18,700                |
| 50.0             | 49.0              | 27,070                | 26,100                | 25,300                | 24,600                | 60.0             | 45.6              | 21,140                | 20,400                | 19,900                | 19,200                | 65.0             | 47.4              | 18,870                | 18,100                | 17,600                | 17,000                |
| 55.0             | 43.3              | 23,960                | 23,100                | 22,500                | 21,900                | 65.0             | 40.3              | 19,060                | 18,400                | 18,000                | 17,500                | 70.0             | 42.9              | 17,100                | 16,400                | 16,000                | 15,600                |
| 60.0             | 36.9              | 21,450                | 20,800                | 20,300                | 19,800                |                  |                   |                       |                       |                       |                       | 75.0             | 37.9              | 15,630                | 15,100                | 14,800                | 14,400                |
| Reeves           |                   | 9                     | 4                     | 4                     | 4                     | Reeves           |                   | 8                     | 4                     | 4                     | 4                     | Reeves           |                   | 7                     | 4                     | 4                     | 2                     |



## SPECIFICATIONS

## Barge

5 Counterweights (57,600 lbs) - 2 Carbody weights (14,400 lbs) - Crawlers in extended position.

| 100' Boom             |                   |                       |                       |                       |                       | 110' Boom             |                   |                       |                       |                       |                       | 120' Boom             |                   |                       |                       |                       |                       |
|-----------------------|-------------------|-----------------------|-----------------------|-----------------------|-----------------------|-----------------------|-------------------|-----------------------|-----------------------|-----------------------|-----------------------|-----------------------|-------------------|-----------------------|-----------------------|-----------------------|-----------------------|
| 360° Rated Load (lbs) |                   |                       |                       |                       |                       | 360° Rated Load (lbs) |                   |                       |                       |                       |                       | 360° Rated Load (lbs) |                   |                       |                       |                       |                       |
| Load Radius (ft)      | Boom Angle (deg.) | 0 Degree Machine List | 1 Degree Machine List | 2 Degree Machine List | 2 Degree Machine List | Load Radius (ft)      | Boom Angle (deg.) | 0 Degree Machine List | 1 Degree Machine List | 2 Degree Machine List | 2 Degree Machine List | Load Radius (ft)      | Boom Angle (deg.) | 0 Degree Machine List | 1 Degree Machine List | 2 Degree Machine List | 2 Degree Machine List |
| 19.0                  | 81.5              | 101,850 *             |                       |                       |                       | 20.0                  | 81.8              | 92,590                |                       |                       |                       | 22.0                  | 81.5              | 80,680 *              |                       |                       |                       |
| 20.0                  | 80.9              | 96,800                |                       |                       |                       | 22.0                  | 80.7              | 83,260                |                       |                       |                       | 24.0                  | 80.5              | 72,950                |                       |                       |                       |
| 22.0                  | 79.8              | 83,400                |                       |                       |                       | 24.0                  | 79.7              | 73,010                |                       |                       |                       | 26.0                  | 79.6              | 64,810                |                       |                       |                       |
| 24.0                  | 78.6              | 73,120                |                       |                       |                       | 26.0                  | 78.6              | 64,900                |                       |                       |                       | 28.0                  | 78.6              | 58,240                |                       |                       |                       |
| 26.0                  | 77.4              | 65,010                |                       |                       |                       | 28.0                  | 77.5              | 58,330                |                       |                       |                       | 30.0                  | 77.6              | 52,800                |                       |                       |                       |
| 28.0                  | 76.3              | 58,440                |                       |                       |                       | 30.0                  | 76.5              | 52,880                |                       |                       |                       | 32.0                  | 76.6              | 48,230                |                       |                       |                       |
| 30.0                  | 75.1              | 53,020                |                       |                       |                       | 32.0                  | 75.4              | 48,320                |                       |                       |                       | 34.0                  | 75.6              | 44,330                |                       |                       |                       |
| 32.0                  | 73.9              | 48,450                | 44,500                |                       |                       | 34.0                  | 74.3              | 44,440                | 40,600                |                       |                       | 36.0                  | 74.7              | 40,980                | 37,600                |                       |                       |
| 34.0                  | 72.7              | 44,550                | 41,100                |                       |                       | 36.0                  | 73.2              | 41,090                | 37,800                |                       |                       | 38.0                  | 73.7              | 38,050                | 35,100                |                       |                       |
| 36.0                  | 71.5              | 41,200                | 38,200                | 35,700                |                       | 38.0                  | 72.1              | 38,160                | 35,300                |                       |                       | 40.0                  | 72.7              | 35,470                | 33,000                |                       |                       |
| 38.0                  | 70.3              | 38,290                | 35,600                | 33,700                |                       | 40.0                  | 71.0              | 35,600                | 33,200                |                       |                       | 45.0                  | 70.1              | 30,220                | 28,300                | 26,200                |                       |
| 40.0                  | 69.0              | 35,730                | 33,500                | 31,600                |                       | 45.0                  | 68.2              | 30,350                | 28,500                |                       |                       | 50.0                  | 67.6              | 26,210                | 24,600                | 23,100                |                       |
| 45.0                  | 65.9              | 30,480                | 28,900                | 27,300                | 25,800                | 50.0                  | 65.4              | 26,340                | 24,900                | 23,500                | 22,100                | 55.0                  | 65.0              | 23,010                | 21,600                | 20,500                | 19,400                |
| 50.0                  | 62.7              | 26,470                | 25,100                | 24,000                | 22,800                | 55.0                  | 62.5              | 23,170                | 21,900                | 20,800                | 19,900                | 60.0                  | 62.3              | 20,450                | 19,300                | 18,300                | 17,400                |
| 55.0                  | 59.5              | 23,320                | 22,200                | 21,200                | 20,200                | 60.0                  | 59.5              | 20,610                | 19,600                | 18,700                | 17,800                | 65.0                  | 59.5              | 18,320                | 17,400                | 16,500                | 15,700                |
| 60.0                  | 56.1              | 20,740                | 19,800                | 19,100                | 18,200                | 65.0                  | 56.4              | 18,490                | 17,700                | 16,900                | 16,100                | 70.0                  | 56.7              | 16,530                | 15,700                | 14,900                | 14,400                |
| 65.0                  | 52.5              | 18,620                | 17,800                | 17,200                | 16,500                | 70.0                  | 53.2              | 16,710                | 16,000                | 15,300                | 14,800                | 75.0                  | 53.8              | 15,010                | 14,300                | 13,700                | 13,200                |
| 70.0                  | 48.8              | 16,860                | 16,200                | 15,600                | 15,000                | 75.0                  | 49.9              | 15,210                | 14,500                | 13,900                | 13,500                | 80.0                  | 50.8              | 13,710                | 13,000                | 12,700                | 12,100                |
| 75.0                  | 44.8              | 15,360                | 14,800                | 14,300                | 13,900                | 80.0                  | 46.4              | 13,910                | 13,300                | 12,900                | 12,500                | 85.0                  | 47.6              | 12,580                | 12,000                | 11,600                | 11,200                |
| 80.0                  | 40.6              | 14,080                | 13,600                | 13,100                | 12,900                | 85.0                  | 42.6              | 12,800                | 12,300                | 11,900                | 11,600                | 90.0                  | 44.3              | 11,590                | 11,100                | 10,700                | 10,400                |
| 85.0                  | 35.9              | 12,980                | 12,600                | 12,200                | 12,000                | 90.0                  | 38.6              | 11,830                | 11,400                | 11,000                | 10,800                | 95.0                  | 40.7              | 10,730                | 10,300                | 9,900                 | 9,600                 |
|                       |                   |                       |                       |                       |                       | 95.0                  | 34.2              | 10,970                | 10,600                | 10,300                | 10,100                | 100.0                 | 36.9              | 9,960                 | 9,500                 | 9,300                 | 8,900                 |
|                       |                   |                       |                       |                       |                       |                       |                   |                       |                       |                       |                       | 105.0                 | 32.7              | 9,280                 | 8,700                 | 8,700                 | 8,500                 |
| Reeves                |                   | 6                     | 4                     | 4                     | 2                     | Reeves                |                   | 6                     | 4                     | 2                     | 2                     | Reeves                |                   | 5                     | 4                     | 2                     | 2                     |
| 130' Boom             |                   |                       |                       |                       |                       | 140' Boom             |                   |                       |                       |                       |                       | 150' Boom             |                   |                       |                       |                       |                       |
| 360° Rated Load (lbs) |                   |                       |                       |                       |                       | 360° Rated Load (lbs) |                   |                       |                       |                       |                       | 360° Rated Load (lbs) |                   |                       |                       |                       |                       |
| Load Radius (ft)      | Boom Angle (deg.) | 0 Degree Machine List | 1 Degree Machine List | 2 Degree Machine List | 2 Degree Machine List | Load Radius (ft)      | Boom Angle (deg.) | 0 Degree Machine List | 1 Degree Machine List | 2 Degree Machine List | 2 Degree Machine List | Load Radius (ft)      | Boom Angle (deg.) | 0 Degree Machine List | 1 Degree Machine List | 2 Degree Machine List | 2 Degree Machine List |
| 24.0                  | 81.3              | 71,200 *              |                       |                       |                       | 24.0                  | 81.9              | 61,720 *              |                       |                       |                       | 26.0                  | 81.7              | 52,680 *              |                       |                       |                       |
| 26.0                  | 80.4              | 64,610                |                       |                       |                       | 26.0                  | 81.1              | 60,840                |                       |                       |                       | 28.0                  | 80.9              | 51,800 *              |                       |                       |                       |
| 28.0                  | 79.5              | 58,020                |                       |                       |                       | 28.0                  | 80.2              | 57,980                |                       |                       |                       | 30.0                  | 80.1              | 51,140 *              |                       |                       |                       |
| 30.0                  | 78.6              | 52,570                |                       |                       |                       | 30.0                  | 79.4              | 52,530                |                       |                       |                       | 32.0                  | 79.3              | 47,810                |                       |                       |                       |
| 32.0                  | 77.7              | 48,010                |                       |                       |                       | 32.0                  | 78.6              | 47,950                |                       |                       |                       | 34.0                  | 78.6              | 43,890                |                       |                       |                       |
| 34.0                  | 76.8              | 44,110                |                       |                       |                       | 34.0                  | 77.7              | 44,040                |                       |                       |                       | 36.0                  | 77.8              | 40,540                |                       |                       |                       |
| 36.0                  | 75.9              | 40,760                |                       |                       |                       | 36.0                  | 76.9              | 40,670                |                       |                       |                       | 38.0                  | 77.0              | 37,610                |                       |                       |                       |
| 38.0                  | 74.9              | 37,830                | 34,600                |                       |                       | 38.0                  | 76.0              | 37,740                |                       |                       |                       | 40.0                  | 76.2              | 35,030                |                       |                       |                       |
| 40.0                  | 74.0              | 35,250                | 32,500                |                       |                       | 40.0                  | 75.2              | 35,160                | 2                     |                       |                       | 45.0                  | 74.2              | 29,760                |                       |                       |                       |
| 45.0                  | 71.7              | 30,000                | 27,800                |                       |                       | 45.0                  | 73.1              | 29,910                |                       |                       |                       | 50.0                  | 72.2              | 25,720                | 23,700                |                       |                       |
| 50.0                  | 69.4              | 25,970                | 24,200                | 22,600                |                       | 50.0                  | 70.9              | 25,880                | 4,100                 | 22,300                |                       | 55.0                  | 70.2              | 22,530                | 20,900                | 19,200                |                       |
| 55.0                  | 67.0              | 22,790                | 21,300                | 20,100                |                       | 55.0                  | 68.7              | 22,680                | 21,200                | 19,700                |                       | 60.0                  | 68.2              | 19,950                | 18,600                | 17,400                |                       |
| 60.0                  | 64.6              | 20,210                | 19,000                | 17,900                | 16,800                | 60.0                  | 66.5              | 20,100                | 18,800                | 17,700                | 15,700                | 65.0                  | 66.1              | 17,810                | 16,600                | 15,600                | 13,700                |
| 65.0                  | 62.1              | 18,070                | 17,100                | 16,100                | 15,400                | 65.0                  | 64.3              | 17,960                | 16,800                | 15,800                | 14,900                | 70.0                  | 64.0              | 16,000                | 15,000                | 14,100                | 13,100                |
| 70.0                  | 59.6              | 16,290                | 15,400                | 14,600                | 14,000                | 70.0                  | 62.0              | 16,150                | 15,100                | 14,400                | 13,600                | 75.0                  | 61.8              | 14,480                | 13,700                | 12,800                | 12,100                |
| 75.0                  | 57.0              | 14,770                | 14,000                | 13,200                | 12,800                | 75.0                  | 59.6              | 14,630                | 13,700                | 13,100                | 12,400                | 80.0                  | 59.6              | 13,160                | 12,300                | 11,700                | 11,100                |
| 80.0                  | 54.3              | 13,470                | 12,800                | 12,100                | 11,700                | 80.0                  | 57.2              | 13,310                | 12,500                | 12,000                | 11,400                | 85.0                  | 57.4              | 12,010                | 11,300                | 10,600                | 10,200                |
| 85.0                  | 51.5              | 12,320                | 11,700                | 11,200                | 10,700                | 85.0                  | 54.7              | 12,160                | 11,500                | 11,000                | 10,600                | 90.0                  | 55.1              | 11,000                | 10,400                | 9,800                 | 9,400                 |
| 90.0                  | 48.6              | 11,330                | 10,700                | 10,400                | 10,000                | 90.0                  | 52.2              | 11,170                | 10,600                | 10,100                | 9,700                 | 95.0                  | 52.7              | 10,110                | 9,500                 | 9,100                 | 8,600                 |
| 95.0                  | 45.6              | 10,440                | 9,900                 | 9,700                 | 9,200                 | 95.0                  | 49.5              | 10,290                | 9,800                 | 9,400                 | 8,900                 | 100.0                 | 50.3              | 9,320                 | 8,700                 | 8,400                 | 8,000                 |
| 100.0                 | 42.4              | 9,670                 | 9,200                 | 8,900                 | 8,600                 | 100.0                 | 46.8              | 9,500                 | 9,000                 | 8,700                 | 8,300                 | 105.0                 | 47.7              | 8,640                 | 8,100                 | 7,800                 | 7,600                 |
| 105.0                 | 39.0              | 8,990                 | 8,600                 | 8,300                 | 8,000                 | 105.0                 | 43.9              | 8,790                 | 8,300                 | 8,100                 | 7,700                 | 110.0                 | 45.1              | 8,000                 | 7,500                 | 7,200                 | 7,000                 |
| 110.0                 | 35.4              | 8,390                 | 8,000                 | 7,800                 | 7,500                 | 110.0                 | 40.8              | 8,170                 | 7,700                 | 7,500                 | 7,200                 | 115.0                 | 42.3              | 7,420                 | 7,100                 | 6,700                 | 6,500                 |
|                       |                   |                       |                       |                       |                       | 115.0                 | 37.6              | 7,620                 | 7,200                 | 7,000                 | 6,800                 | 120.0                 | 39.4              | 6,920                 | 6,600                 | 6,300                 | 6,100                 |
|                       |                   |                       |                       |                       |                       | 120.0                 | 34.0              | 7,120                 | 6,700                 | 6,500                 | 6,400                 | 125.0                 | 36.2              | 6,450                 | 6,100                 | 5,800                 | 5,700                 |
|                       |                   |                       |                       |                       |                       |                       |                   |                       |                       |                       |                       | 130.0                 | 32.8              | 6,040                 | 5,600                 | 5,600                 | 5,300                 |
| Reeves                |                   | 5                     | 4                     | 2                     | 2                     | Reeves                |                   | 4                     | 2                     | 2                     | 2                     | Reeves                |                   | 4                     | 2                     | 2                     | 2                     |

This information is for reference use only. Operators manual should be consulted and adhered to.  
Please contact Bigge Crane and Rigging Co. at 888-337-BIGGE or email info@bigge.com for further information.



## SPECIFICATIONS

## Barge

5 Counterweights (57,600 lbs) - 2 Carbody weights (14,400 lbs) - Crawlers in extended position.

| 160' Boom             |                   |                       |                       |                       |                       | 170' Boom             |                   |                       |                       |                       |                       | 180' Boom             |                   |                       |                       |                       |                       |
|-----------------------|-------------------|-----------------------|-----------------------|-----------------------|-----------------------|-----------------------|-------------------|-----------------------|-----------------------|-----------------------|-----------------------|-----------------------|-------------------|-----------------------|-----------------------|-----------------------|-----------------------|
| 360° Rated Load (lbs) |                   |                       |                       |                       |                       | 360° Rated Load (lbs) |                   |                       |                       |                       |                       | 360° Rated Load (lbs) |                   |                       |                       |                       |                       |
| Load Radius (ft)      | Boom Angle (deg.) | 0 Degree Machine List | 1 Degree Machine List | 2 Degree Machine List | 2 Degree Machine List | Load Radius (ft)      | Boom Angle (deg.) | 0 Degree Machine List | 1 Degree Machine List | 2 Degree Machine List | 2 Degree Machine List | Load Radius (ft)      | Boom Angle (deg.) | 0 Degree Machine List | 1 Degree Machine List | 2 Degree Machine List | 2 Degree Machine List |
| 28.0                  | 81.5              | 44,090 *              |                       |                       |                       | 28.0                  | 82.0              | 38,800 *              |                       |                       |                       | 30.0                  | 81.8              | 33,730 *              |                       |                       |                       |
| 30.0                  | 80.7              | 43,430 *              |                       |                       |                       | 30.0                  | 81.3              | 38,130 *              |                       |                       |                       | 32.0                  | 81.1              | 33,060 *              |                       |                       |                       |
| 32.0                  | 80.0              | 42,760 *              |                       |                       |                       | 32.0                  | 80.6              | 37,470 *              |                       |                       |                       | 34.0                  | 80.5              | 32,620 *              |                       |                       |                       |
| 34.0                  | 79.3              | 42,100 *              |                       |                       |                       | 34.0                  | 79.9              | 37,030 *              |                       |                       |                       | 36.0                  | 79.8              | 31,960 *              |                       |                       |                       |
| 36.0                  | 78.6              | 40,520                |                       |                       |                       | 36.0                  | 79.2              | 36,370 *              |                       |                       |                       | 38.0                  | 79.2              | 31,520 *              |                       |                       |                       |
| 38.0                  | 77.8              | 37,560                |                       |                       |                       | 38.0                  | 78.6              | 35,710 *              |                       |                       |                       | 40.0                  | 78.5              | 31,080 *              |                       |                       |                       |
| 40.0                  | 77.1              | 34,980                |                       |                       |                       | 40.0                  | 77.9              | 34,780                |                       |                       |                       | 45.0                  | 76.9              | 29,250                |                       |                       |                       |
| 45.0                  | 75.2              | 29,710                |                       |                       |                       | 45.0                  | 76.1              | 29,510                |                       |                       |                       | 50.0                  | 75.3              | 25,220                |                       |                       |                       |
| 50.0                  | 73.4              | 25,680                |                       |                       |                       | 50.0                  | 74.4              | 25,460                |                       |                       |                       | 55.0                  | 73.6              | 22,000                |                       |                       |                       |
| 55.0                  | 71.5              | 22,480                | 20,800                |                       |                       | 55.0                  | 72.6              | 22,260                | 20,500                |                       |                       | 60.0                  | 72.0              | 19,400                | 17,800                |                       |                       |
| 60.0                  | 69.6              | 19,880                | 18,400                | 17,100                |                       | 60.0                  | 70.8              | 19,660                | 18,100                | 15,700                |                       | 65.0                  | 70.3              | 17,260                | 15,900                | 13,700                |                       |
| 65.0                  | 67.7              | 17,720                | 16,400                | 15,400                |                       | 65.0                  | 69.1              | 17,520                | 16,100                | 15,000                |                       | 70.0                  | 68.6              | 15,450                | 14,300                | 13,100                |                       |
| 70.0                  | 65.7              | 15,930                | 14,800                | 14,000                | 12,000                | 70.0                  | 67.2              | 15,710                | 14,500                | 13,700                |                       | 75.0                  | 66.8              | 13,910                | 12,800                | 11,900                | 9,300                 |
| 75.0                  | 63.7              | 14,390                | 13,400                | 12,700                | 11,600                | 75.0                  | 65.4              | 14,170                | 13,100                | 12,400                | 10,400                | 80.0                  | 65.1              | 12,560                | 11,700                | 10,800                | 9,000                 |
| 80.0                  | 61.7              | 13,070                | 12,200                | 11,500                | 10,900                | 80.0                  | 63.5              | 12,850                | 11,900                | 11,200                | 10,200                | 85.0                  | 63.3              | 11,410                | 10,600                | 10,000                | 8,800                 |
| 85.0                  | 59.7              | 11,920                | 11,100                | 10,500                | 9,900                 | 85.0                  | 61.6              | 11,680                | 10,800                | 10,300                | 9,600                 | 90.0                  | 61.5              | 10,400                | 9,600                 | 9,100                 | 8,500                 |
| 90.0                  | 57.6              | 10,910                | 10,100                | 9,700                 | 9,200                 | 90.0                  | 59.7              | 10,670                | 9,900                 | 9,400                 | 8,900                 | 95.0                  | 59.7              | 9,500                 | 8,800                 | 8,300                 | 7,800                 |
| 95.0                  | 55.4              | 10,000                | 9,300                 | 8,800                 | 8,500                 | 95.0                  | 57.7              | 9,780                 | 9,100                 | 8,600                 | 8,200                 | 100.0                 | 57.8              | 8,700                 | 8,100                 | 7,600                 | 7,200                 |
| 100.0                 | 53.2              | 9,210                 | 8,700                 | 8,200                 | 7,900                 | 100.0                 | 55.7              | 8,990                 | 8,400                 | 7,900                 | 7,600                 | 105.0                 | 55.9              | 8,000                 | 7,300                 | 7,000                 | 6,600                 |
| 105.0                 | 50.9              | 8,500                 | 8,000                 | 7,500                 | 7,200                 | 105.0                 | 53.6              | 8,260                 | 7,800                 | 7,200                 | 6,900                 | 110.0                 | 54.0              | 7,340                 | 6,800                 | 6,400                 | 6,100                 |
| 110.0                 | 48.6              | 7,870                 | 7,400                 | 7,100                 | 6,700                 | 110.0                 | 51.5              | 7,620                 | 7,100                 | 6,800                 | 6,400                 | 115.0                 | 52.0              | 6,760                 | 6,200                 | 5,900                 | 5,600                 |
| 115.0                 | 46.1              | 7,290                 | 6,800                 | 6,500                 | 6,300                 | 115.0                 | 49.3              | 7,050                 | 6,600                 | 6,200                 | 6,000                 | 120.0                 | 49.9              | 6,230                 | 5,700                 | 5,500                 | 5,100                 |
| 120.0                 | 43.6              | 6,760                 | 6,400                 | 6,000                 | 5,800                 | 120.0                 | 47.0              | 6,520                 | 6,100                 | 5,700                 | 5,600                 | 125.0                 | 47.8              | 5,700                 | 5,300                 | 4,800                 | 4,600                 |
| 125.0                 | 40.9              | 6,280                 | 6,000                 | 5,600                 | 5,400                 | 125.0                 | 44.7              | 6,040                 | 5,600                 | 5,300                 | 5,100                 | 130.0                 | 45.6              | 5,220                 | 4,800                 | 4,600                 | 4,200                 |
| 130.0                 | 38.1              | 5,860                 | 5,500                 | 5,300                 | 5,000                 | 130.0                 | 42.2              | 5,570                 | 5,200                 | 4,900                 | 4,700                 | 135.0                 | 43.3              | 4,780                 | 4,400                 | 4,200                 | 3,900                 |
| 135.0                 | 35.0              | 5,440                 | 5,100                 | 5,000                 | 4,600                 | 135.0                 | 39.6              | 5,150                 | 4,800                 | 4,500                 | 4,300                 | 140.0                 | 40.9              | 4,380                 | 4,000                 | 3,800                 | 3,600                 |
| 140.0                 | 31.8              | 5,070                 |                       | 4,500                 | 4,400                 | 140.0                 | 36.9              | 4,760                 | 4,400                 | 4,200                 | 3,900                 | 145.0                 | 38.4              | 4,030                 | 3,600                 | 3,500                 | 3,200                 |
|                       |                   |                       |                       |                       |                       | 145.0                 | 34.0              | 4,380                 | 4,100                 | 3,800                 | 3,700                 | 150.0                 | 35.8              | 3,680                 | 3,400                 | 3,200                 | 3,000                 |
|                       |                   |                       |                       |                       |                       | 150.0                 | 30.8              | 4,050                 |                       |                       | 3,500                 | 155.0                 | 33.0              | 3,370                 | 3,100                 | 2,900                 | 2,800                 |
| Reeves                |                   | 4                     | 2                     | 2                     | 2                     | Reeves                |                   | 4                     | 2                     | 2                     | 2                     | Reeves                |                   | 2                     | 2                     | 2                     | 2                     |
| 190' Boom             |                   |                       |                       |                       |                       | 200' Boom             |                   |                       |                       |                       |                       |                       |                   |                       |                       |                       |                       |
| 360° Rated Load (lbs) |                   |                       |                       |                       |                       | 360° Rated Load (lbs) |                   |                       |                       |                       |                       | 360° Rated Load (lbs) |                   |                       |                       |                       |                       |
| Load Radius (ft)      | Boom Angle (deg.) | 0 Degree Machine List | 1 Degree Machine List | 2 Degree Machine List | 2 Degree Machine List | Load Radius (ft)      | Boom Angle (deg.) | 0 Degree Machine List | 1 Degree Machine List | 2 Degree Machine List | 2 Degree Machine List | Load Radius (ft)      | Boom Angle (deg.) | 0 Degree Machine List | 1 Degree Machine List | 2 Degree Machine List | 2 Degree Machine List |
| 32.0                  | 81.6              | 29,540 *              |                       |                       |                       | 34.0                  | 81.4              | 25,790 *              |                       |                       |                       |                       |                   |                       |                       |                       |                       |
| 34.0                  | 81.0              | 28,880 *              |                       |                       |                       | 36.0                  | 80.9              | 25,350 *              |                       |                       |                       |                       |                   |                       |                       |                       |                       |
| 36.0                  | 80.4              | 28,430 *              |                       |                       |                       | 38.0                  | 80.3              | 24,910 *              |                       |                       |                       |                       |                   |                       |                       |                       |                       |
| 38.0                  | 79.8              | 27,990 *              |                       |                       |                       | 40.0                  | 79.7              | 24,470 *              |                       |                       |                       |                       |                   |                       |                       |                       |                       |
| 40.0                  | 79.2              | 27,550 *              |                       |                       |                       | 45.0                  | 78.2              | 23,360 *              |                       |                       |                       |                       |                   |                       |                       |                       |                       |
| 45.0                  | 77.6              | 26,450 *              |                       |                       |                       | 50.0                  | 76.8              | 22,480 *              |                       |                       |                       |                       |                   |                       |                       |                       |                       |
| 50.0                  | 76.1              | 25,300                |                       |                       |                       | 55.0                  | 75.3              | 21,380 *              |                       |                       |                       |                       |                   |                       |                       |                       |                       |
| 55.0                  | 74.5              | 22,110                |                       |                       |                       | 60.0                  | 73.8              | 19,310                |                       |                       |                       |                       |                   |                       |                       |                       |                       |
| 60.0                  | 72.9              | 19,510                | 16,800                |                       |                       | 65.0                  | 72.3              | 17,150                | 14,100                |                       |                       |                       |                   |                       |                       |                       |                       |
| 65.0                  | 71.3              | 17,350                | 15,600                |                       |                       | 70.0                  | 70.8              | 15,320                | 13,200                | 10,200                |                       |                       |                   |                       |                       |                       |                       |
| 70.0                  | 69.7              | 15,540                | 14,200                | 11,700                |                       | 75.0                  | 69.3              | 13,770                | 12,400                | 9,600                 |                       |                       |                   |                       |                       |                       |                       |
| 75.0                  | 68.1              | 13,990                | 12,800                | 11,100                | 8,100                 | 80.0                  | 67.7              | 12,430                | 11,300                | 9,100                 | 6,800                 |                       |                   |                       |                       |                       |                       |
| 80.0                  | 66.5              | 12,650                | 11,600                | 10,600                | 7,900                 | 85.0                  | 66.2              | 11,260                | 10,400                | 8,600                 | 6,600                 |                       |                   |                       |                       |                       |                       |
| 85.0                  | 64.8              | 11,500                | 10,700                | 9,900                 | 7,700                 | 90.0                  | 64.6              | 10,250                | 9,400                 | 8,100                 | 6,200                 |                       |                   |                       |                       |                       |                       |
| 90.0                  | 63.2              | 10,470                | 9,600                 | 9,000                 | 7,300                 | 95.0                  | 63.0              | 9,340                 | 8,600                 | 7,600                 | 5,900                 |                       |                   |                       |                       |                       |                       |
| 95.0                  | 61.4              | 9,560                 | 8,800                 | 8,200                 | 6,900                 | 100.0                 | 61.4              | 8,530                 | 7,900                 | 7,100                 | 5,500                 |                       |                   |                       |                       |                       |                       |
| 100.0                 | 59.7              | 8,770                 | 8,200                 | 7,600                 | 6,600                 | 105.0                 | 59.7              | 7,820                 | 7,300                 | 6,600                 | 5,100                 |                       |                   |                       |                       |                       |                       |
| 105.0                 | 57.9              | 8,040                 | 7,500                 | 7,000                 | 6,300                 | 110.0                 | 58.1              | 7,160                 | 6,600                 | 6,000                 | 4,900                 |                       |                   |                       |                       |                       |                       |
| 110.0                 | 56.1              | 7,400                 | 6,900                 | 6,500                 | 5,800                 | 115.0                 | 56.3              | 6,560                 | 6,000                 | 5,600                 | 4,500                 |                       |                   |                       |                       |                       |                       |
| 115.0                 | 54.3              | 6,810                 | 6,300                 | 5,900                 | 5,400                 | 120.0                 | 54.6              | 5,970                 | 5,400                 | 5,000                 | 4,200                 |                       |                   |                       |                       |                       |                       |
| 120.0                 | 52.4              | 6,280                 | 5,800                 | 5,400                 | 5,000                 | 125.0                 | 52.8              | 5,440                 | 5,000                 | 4,500                 | 3,800                 |                       |                   |                       |                       |                       |                       |
| 125.0                 | 50.5              | 5,750                 | 5,200                 | 5,000                 | 4,600                 | 130.0                 | 51.0              | 4,960                 | 4,600                 | 4,100                 | 3,600                 |                       |                   |                       |                       |                       |                       |
| 130.0                 | 48.5              | 5,260                 | 4,800                 | 4,600                 | 4,200                 | 135.0                 | 49.1              | 4,510                 | 4,100                 | 3,700                 | 3,200                 |                       |                   |                       |                       |                       |                       |
| 135.0                 | 46.4              | 4,800                 | 4,400                 | 4,200                 | 3,800                 | 140.0                 | 47.2              | 4,100                 | 3,700                 | 3,400                 | 2,900                 |                       |                   |                       |                       |                       |                       |
| 140.0                 | 44.3              | 4,400                 | 3,900                 | 3,700                 | 3,500                 | 145.0                 | 45.2              | 3,700                 | 3,300                 | 3,000                 | 2,600                 |                       |                   |                       |                       |                       |                       |
| 145.0                 | 42.1              | 4,010                 | 3,600                 | 3,500                 | 3,200                 | 150.0                 | 43.1              | 3,350                 | 2,900                 | 2,800                 |                       |                       |                   |                       |                       |                       |                       |
| 150.0                 | 39.8              | 3,680                 | 3,300                 | 3,100                 | 2,900                 | 155.0                 | 41.0              | 3,040                 | 2,700                 |                       |                       |                       |                   |                       |                       |                       |                       |
| 155.0                 | 37.4              | 3,350                 | 3,000                 | 2,900                 | 2,600                 |                       |                   |                       |                       |                       |                       |                       |                   |                       |                       |                       |                       |
| 160.0                 | 34.8              | 3,040                 | 2,700                 | 2,600                 |                       |                       |                   |                       |                       |                       |                       |                       |                   |                       |                       |                       |                       |
| 165.0                 | 32.0              | 2,770                 | 2,500                 |                       |                       |                       |                   |                       |                       |                       |                       |                       |                   |                       |                       |                       |                       |





## This image shows a single sheet of white paper with horizontal ruling lines. The lines are evenly spaced and run across the width of the page. There are no margins, text, or other markings on the paper.





## This image shows a single sheet of white paper with horizontal ruling lines. The lines are evenly spaced and run across the width of the page. There are no margins, text, or other markings on the paper.

Note: This catalog may contain photographs of machines with specifications, attachments and optional equipment not certified for operation in your country. Please consult KOBELCO for those items you may require. Due to our policy of continual product improvements all designs and specifications are subject to change without advance notice.

Copyright by KOBELCO CRANES CO., LTD. No part of this catalog may be reproduced in any manner without notice.

## **KOBELCO CRANES CO., LTD.**

17-1, Higashigotanda 2-chome, Shinagawa-ku, Tokyo 141-8626 JAPAN

Tel: +81-3-5789-2130 Fax: +81-3-5789-3372

URL: <http://www.kobelco-cranes.com/>

Inquiries To:

## **KOBELCO CRANES NORTH AMERICA, INC.**

10845 Train Court, Houston, Texas 77041, USA

Tel: +1-713-856-5755 Fax: +1-713-856-9072

URL: <http://www.kobelcocranesnorthamerica.com/>