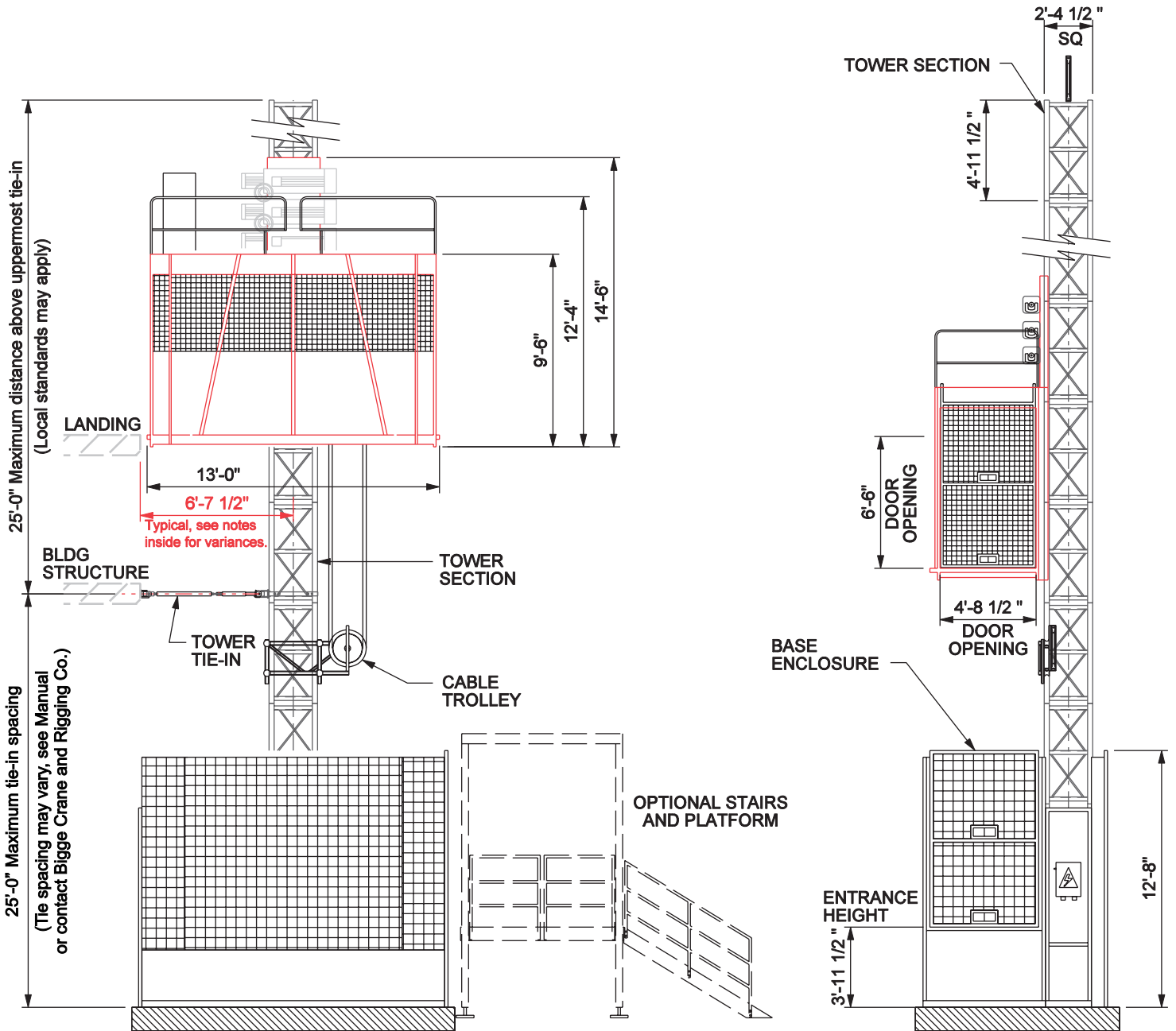
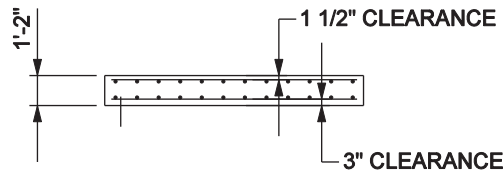
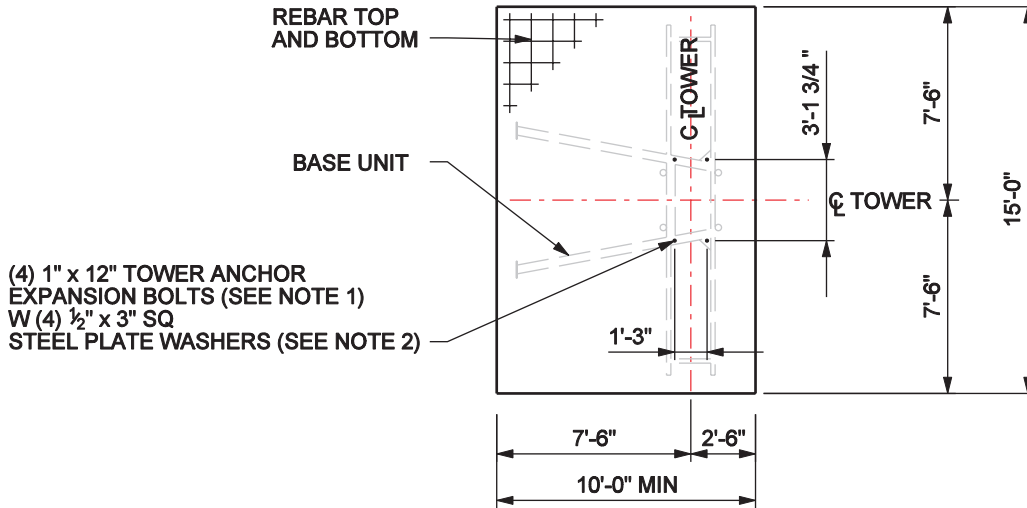


# HERCULES F 6000 SLS





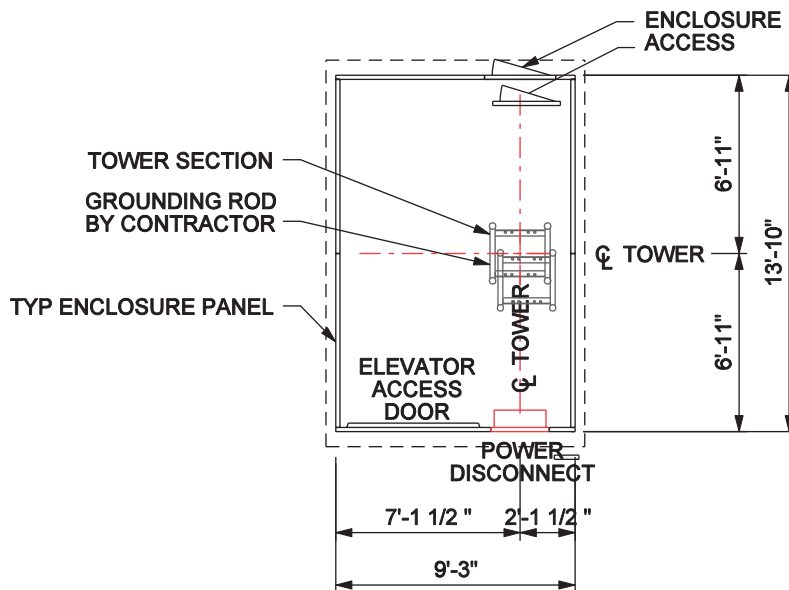
FOUNDATION ELEVATION VIEW



FOUNDATION PLAN VIEW

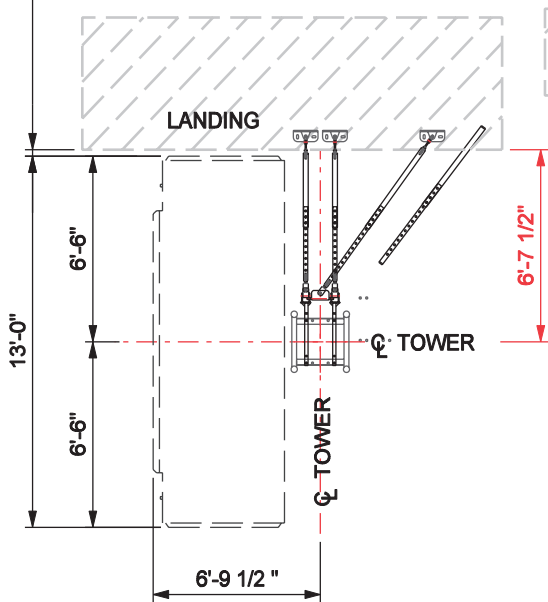
**NOTES:**

1. 1" x 12" HILTI Kwik Bolt II anchor bolt or approved equal. Bolt provided by contractor.
2. Foundation slab: 10'-0" x 15'-0" x 1'-2" with 3500psi concrete.
3. Reinforcing bars are #5 ASTM 615-60 10" o.c. each way.
4. Foundation based on 490 foot mast height.
5. Foundation pad designed for minimum soil bearing of 1000 psf.
6. Refer to manufacturer's manual before installing, operating, servicing, repairing, jumping or dismantling.

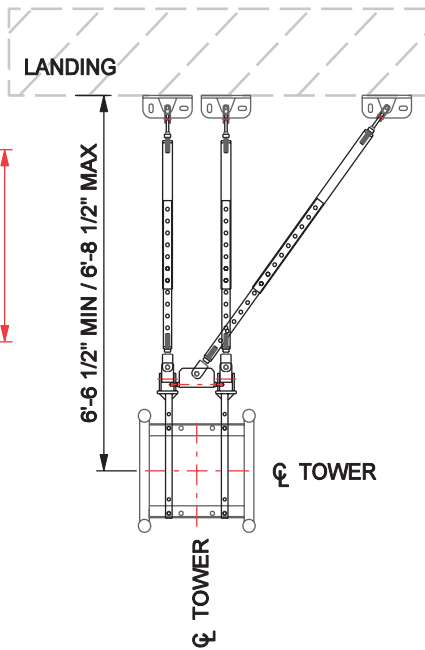


GROUND ENCLOSURE PLAN VIEW

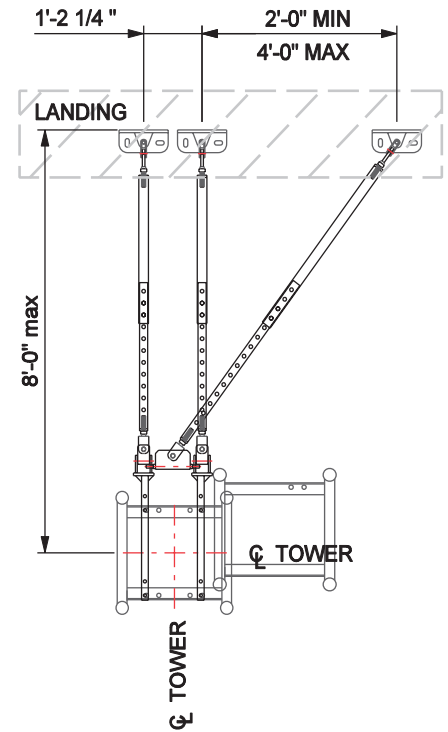
**IMPORTANT!**  
ANSI A10.4 11.3 specifies a 1/2" (min) to 2 1/2" (max) clearance between car platform sill and landing sill. Verify before installing to assure compliance with appropriate standards, codes and regulations.



TIE-IN PLAN VIEW



FACE MOUNT TIE-IN PLAN VIEW



FLOOR MOUNT TIE-IN PLAN VIEW

**NOTE:**  
Distances above are for a typical type 4 tie-in. Alternate anchoring methods are available. Contact Bigge Crane and Rigging for information.

## MODEL VARIATIONS

F 6000 SLS

130 FPM

## GENERAL

LOAD CAPACITY  
INSIDE ELEVATOR CAR DIMENSIONS  
DOOR OPENING (END)  
TOWER SECTION LENGTH  
MAXIMUM TOWER HEIGHT  
MAXIMUM TOWER TIE-IN SPACING

6,000 lb (PER CAR)  
4'-10" wide x 7'-9" high x 12'-3" long  
4'-8 1/2" x 6'-6"  
4'-11 1/2"  
490'-0"  
25'-0"

## WEIGHTS

GROUND ENCLOSURE  
BASE UNIT  
ELEVATOR CAR  
TOWER SECTION (6 mm)  
TIE-IN (TYPE 4)

1,980 lb  
1,200 lb  
5,800 lb  
465 lb  
212 lb per set

## ELECTRICAL

POWER REQUIREMENT (PER CAR)  
MOTORS (PER CAR)

480 VOLT - 100AMPS - 3 PHASE - 60 HZ  
3 x 30 HP

### SAFETY FEATURES

- Electronic and mechanical door interlocks on elevator cars and ground enclosure unit
- Overload device to prevent elevator operation when rated payload has been exceeded
- Spring buffer assembly
- Low speed elevators do not require counterweights
- Galvanized tower sections and tie-ins

### DESIGN FEATURES

- Smooth starting and stopping without surging or jarring the elevator car
- The elevator starting current is lower than the rated current
- Using the frequency conversion drive greatly reduces mechanical wear and tear on the elevator and its components
- The frequency conversion drive is more efficient and uses less power

### INSTALLATION

- For instructions regarding the erection, climbing, dismantling, operation and maintenance of the elevator car refer to the operations manual
- This product must be operated by competent personnel that have been oriented with the operator's manual, understand the operating and maintenance procedures in that manual, and will operate the hoist in a safe manner to conform with the manufacturers specifications and in compliance with all federal, state, standards and regulations
- Drawings are for illustrative purposes only and do not necessarily show the exact configurations of products offered on the market at a particular time



### RENTAL • SALES • PARTS AND SERVICE

**SAN LEANDRO, CA**  
T: (510) 638-8100  
F: (510) 639-4053

**LOS ANGELES, CA**  
T: (714) 521-6410  
F: (714) 670-0247

**SALT LAKE CITY, UT**  
T: (801) 292-2453  
F: (801) 292-3001

**AUBURN, WA**  
T: (206) 443-8500  
F: (253) 833-3411

**RICHMOND, VA**  
T: (804) 271-9356  
F: (804) 271-9425

**PAHRUMP, NV**  
T: (702) 433-8033  
F: (775) 727-0378