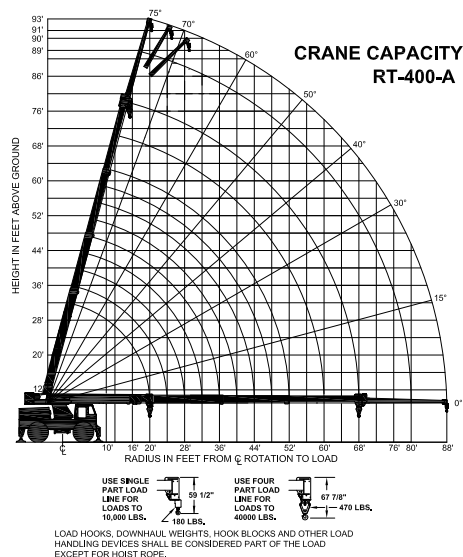
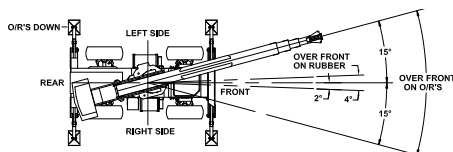




## Crane Capacity Chart: Imperial



Load hooks, downhaul weights, hook blocks and other load handling devices except hoist rope shall be considered part of the load.



The load hoist line on this unit must be 5/8" dia. 425 Foot long compact 35x7 class grade 2160 wire rope (or equivalent) with a minimum breaking strength of 35,000 lbs.

Approved tires: 17.5-2520 Pr-100 psi

Torque wheel nuts to 475 ft. Lbs. (These conditions must be maintained to handle rated loads on this crane.)

CAPACITIES APPLY TO OPERATION ON FIRM LEVEL SURFACE									
LOAD RADIUS FEET	MAIN BOOM OR EXTENSION CAPACITIES IN POUNDS								
	360° ROTATION				OVER FRONT				
	ON RUBBER		ON OUTRIGGERS		ON RUBBER		ON OUTRIGGERS		
MAIN BOOM	10	18300		40000		26300		40000	
	12	13900		34100		22000		34100	
	14	10900		29200		18000		29200	
	16	8600		25500		14800		25500	
	18	7300		23200		12400		22700	
	20	6000		22000		10000		22000	
	22	5000		19000		8300		20000	
	24	4200		17800		7000		18300	
	26	3600		16100		6100		16900	
	28	3000		13300		5200		15700	
	30	2500		12000		4600		14600	
	32	2200		10700		4000		13700	
	34	1800		9700		3500		12900	
	36	1500		8900		3100		11900	
	38	1300		8000		2700		10900	
	40	1000		7300		2400		9900	
	42	800		6700		2000		9200	
	46	----		5600		1600		8100	
	50	----		4700		1200		7000	
	54	----		4000		800		6100	
58	----		3400		500		5300		
62	----		2900		----		4600		
66	----		2400		----		4000		
68	----		2300		----		3600		
BOOM EXTENSION	72	----		2500		----		2800	
	76	----		2000		----		2800	
	80	----		1600		----		2800	
	84	----		1300		----		2800	
	88	----		1100		----		2000	
	BOOM EXTENSION	20-FOOT BOOM EXTENSION CAPACITIES							
		MAIN BOOM ANGLE							
	ANGLE	0°	15°	30°	40°	50°	60°	70°	75°
	0°	2300	2400	2700	3100	3700	4800	6200	7000
	15°	---	2300	2400	2600	2900	3400	4100	4800
30°	---	---	2300	2400	2500	2700	3100	3400	

DO NOT POSITION BOOM AT LOAD RADII WHERE NO LOAD CAPACITIES ARE SHOWN.

EXCEEDING CAPACITY RATINGS OR APPLYING SIDE LOADS TO THE BOOM OR BOOM EXTENSION IS MISUSE, IS HAZARDOUS, AND VOIDS WARRANTY.

CAUTION: BOOM EXTENSION LOADS MUST NOT EXCEED MAIN BOOM CAPACITY. DO NOT PICK AND CARRY WITH LOADS ON BOOM EXTENSION. DO NOT LIFT LOADS ON BOOM EXTENSION WHEN ON RUBBER.

## RT-400-A Rough Terrain Crane

LOAD RADIUS IS THE HORIZONTAL DISTANCE FROM THE CENTER OF ROTATION OF THE UNLOADED CRANE TO THE VERTICAL LOAD LINE WITH THE LOAD APPLIED.

CAPACITIES ON OUTRIGGERS ARE 85% OF TIPPING LOADS. CAPACITIES ON RUBBER ARE 75% OF TIPPING LOADS. CAPACITIES BELOW BOLD LINES ARE LIMITED BY TIPPING. OTHER CAPACITIES ARE LIMITED BY STRUCTURAL OR HYDRAULIC CAPACITY.

PICK AND CARRY WITH THE SHORTEST PRACTICAL BOOM, CENTERED OVER THE FRONT. OPERATE WITH BOOM AS LOW AS POSSIBLE, WITH THE LOAD CLOSE TO THE GROUND. PICK AND CARRY CAPACITIES ARE FOR SMOOTH, LEVEL PAVED SURFACE. SPEED MUST BE LESS THAN 3 MPH.

THE BOOMS ON THIS UNIT ARE ALL STEEL AND HAVE NO LINE VOLTAGE RATING - NO ELECTRICAL INSULATION VALUE.

MAXIMUM HYDRAULIC PRESSURE: 3000 PSI

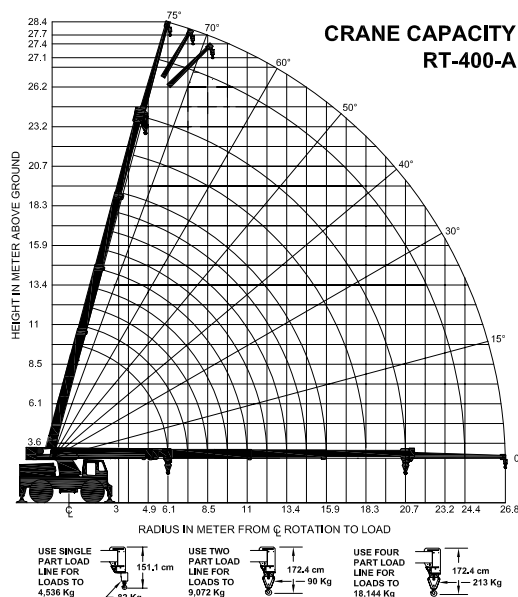
BOOM EXTENSION DEDUCT: 500 LBS WHEN STOWED ON BASE BOOM

ENSURE ANTI-TWO-BLOCK SWITCH IS FUNCTIONAL AFTER DEPLOYING OR STOWING BOOM EXTENSION.

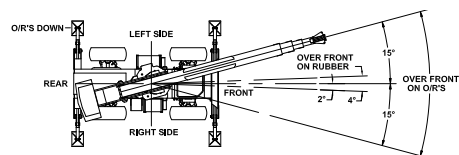
www.BMCcranes.com  
© 2019 Broderick Manufacturing Corp.

# BMC<sup>®</sup> BRODERSON<sup>®</sup> Manufacturing Corp.

## Crane Capacity Chart: Metric



Load hooks, downhaul weights, hook blocks and other load handling devices except hoist rope shall be considered part of the load.



The load hoist line on this unit must be 5/8" dia. 425 Foot long compact 35x7 class grade 2160 wire rope (or equivalent) with a minimum breaking strength of 15,875 kgs.

Approved tires: 17.5-25 20 PR - 6.9 bar

Torque wheel nuts to 644 Nm. (These conditions must be maintained to handle rated loads on this crane.)

CAPACITIES APPLY TO OPERATION ON FIRM LEVEL SURFACE									
LOAD RADIUS (M)	MAIN BOOM OR EXTENSION CAPACITIES IN POUNDS								
	360° ROTATION				OVER FRONT				
	ON RUBBER		ON OUTRIGGERS		ON RUBBER		ON OUTRIGGERS		
MAIN BOOM	3	8300		18100		11900		18100	
	3.6	6300		15450		9950		15450	
	4.2	4900		13200		8150		13200	
	4.8	3900		11550		6700		11550	
	5.4	3300		10500		5600		10300	
	6	2700		9950		4500		9950	
	6.7	2250		8600		3750		9050	
	7.3	1900		8050		3150		8300	
	7.9	1600		7300		2750		7650	
	8.5	1350		6000		2350		7100	
	9.1	1100		5400		2050		6600	
	9.7	1000		4850		1800		6200	
	10.3	800		4400		1550		5850	
	10.9	650		4000		1400		5400	
	11.5	550		3600		1200		4900	
	12.1	450		3300		1050		4500	
	12.8	350		3000		900		4150	
	14	---		2500		700		3650	
	15.2	---		2100		500		3150	
	16.4	---		1800		350		2750	
	17.6	---		1500		200		2400	
18.8	---		1300		---		2050		
20.1	---		1050		---		1800		
20.7	---		1000		---		1600		
BOOM EXTENSION	21.9	---		1100		---		1250	
	23.1	---		900		---		1250	
	24.3	---		700		---		1250	
	25.6	---		550		---		1250	
	26.8	---		500		---		900	
	BOOM EXTENSION	20-FOOT BOOM EXTENSION CAPACITIES							
		MAIN BOOM ANGLE							
	ANGLE	0°	15°	30°	40°	50°	60°	70°	75°
	0°	1200	1200	1300	1500	1800	2300	2800	3100
	15°	---	1100	1200	1200	1300	1500	1900	2100
30°	---	---	1000	1100	1100	1200	1400	1500	

DO NOT POSITION BOOM AT LOAD RADII WHERE NO LOAD CAPACITIES ARE SHOWN.

EXCEEDING CAPACITY RATINGS OR APPLYING SIDE LOADS TO THE BOOM OR BOOM EXTENSION IS MISUSE, IS HAZARDOUS, AND VOIDS WARRANTY.

CAUTION: BOOM EXTENSION LOADS MUST NOT EXCEED MAIN BOOM CAPACITY. DO NOT PICK AND CARRY WITH LOADS ON BOOM EXTENSION.

## RT-400-A Rough Terrain Crane

LOAD RADIUS IS THE HORIZONTAL DISTANCE FROM THE CENTER OF ROTATION OF THE UNLOADED CRANE TO THE VERTICAL LOAD LINE WITH THE LOAD APPLIED.

CAPACITIES ON OUTRIGGERS ARE 85% OF TIPPING LOADS. CAPACITIES ON RUBBER ARE 75% OF TIPPING LOADS. CAPACITIES BELOW BOLD LINES ARE LIMITED BY TIPPING. OTHER CAPACITIES ARE LIMITED BY STRUCTURAL OR HYDRAULIC CAPACITY.

PICK AND CARRY WITH THE SHORTEST PRACTICAL BOOM, CENTERED OVER THE FRONT. OPERATE WITH BOOM AS LOW AS POSSIBLE, WITH THE LOAD CLOSE TO THE GROUND. PICK AND CARRY CAPACITIES ARE FOR SMOOTH, LEVEL PAVED SURFACE. SPEED MUST BE LESS THAN 4.8 KPH.

THE BOOMS ON THIS UNIT ARE ALL STEEL AND HAVE NO LINE VOLTAGE RATING - NO ELECTRICAL INSULATION VALUE.

MAXIMUM HYDRAULIC PRESSURE:  
206.8 bar

BOOM EXTENSION DEDUCT: 227 Kg  
WHEN STOWED ON BASE BOOM

ENSURE ANTI-TWO-BLOCK SWITCH IS FUNCTIONAL AFTER DEPLOYING OR STOWING BOOM EXTENSION.

www.BMCcranes.com

© 2019 Broderon Manufacturing Corp.

BMC\_rt400a-lc\_4\_19

